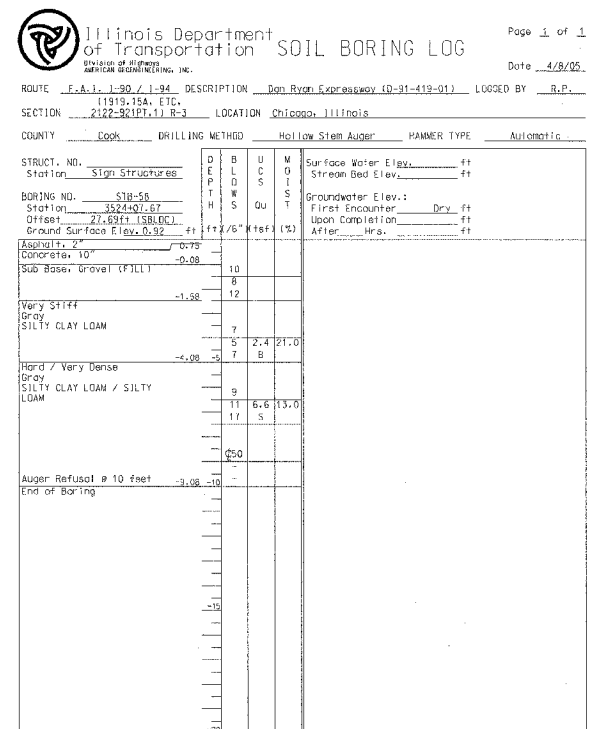
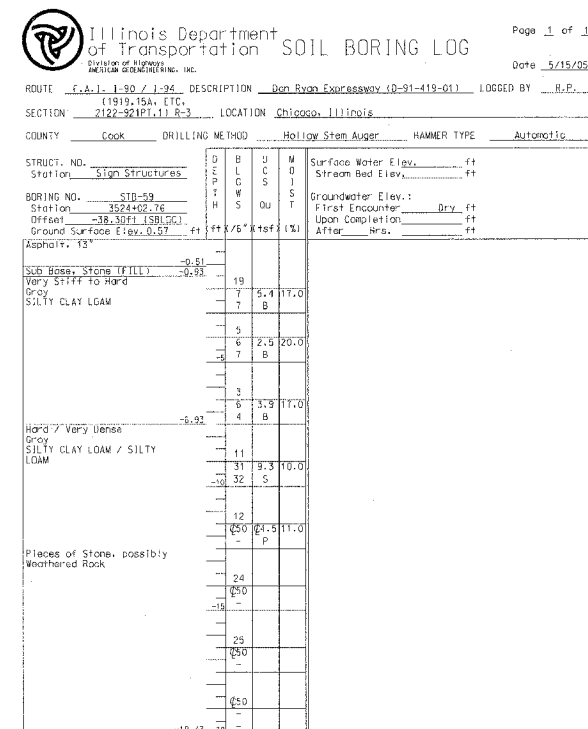


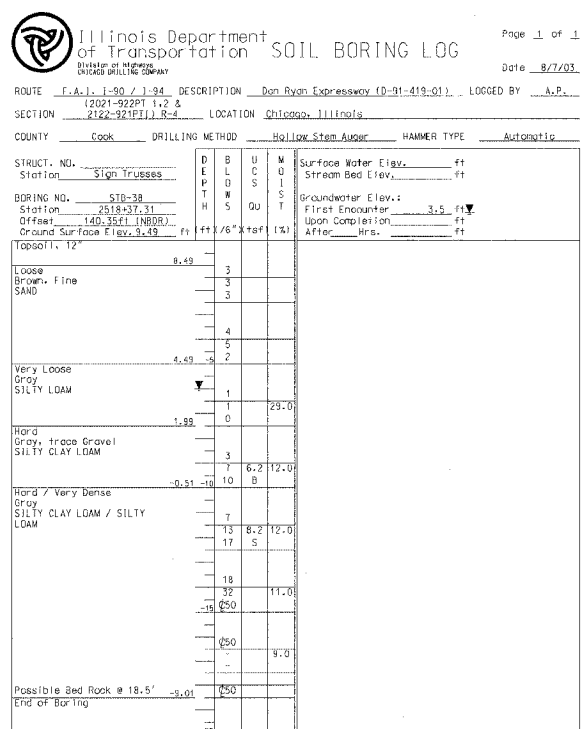
The Unconfined Compressive Strength (UCS) Failure Mode is indicated by (B-Bulge, S-Shear, P-Penetrometer). The SPT (N value) is the sum of the last two blow values in each sampling zone (ASHTO T206) BBS, from 137 (Rev. 8-99)



The Unconfined Compressive Strength (UCS) Failure Mode is indicated by (B-Bulge, S-Shear, P-Penetrometer). The SPT (N value) is the sum of the last two blow values in each sampling zone (ASHTO T206) BBS, from 137 (Rev. 8-99)



The Unconfined Compressive Strength (UCS) Failure Mode is indicated by (B-Bulge, S-Shear, P-Penetrometer). The SPT (N value) is the sum of the last two blow values in each sampling zone (ASHTO T206) BBS, from 137 (Rev. 8-99)



The Unconfined Compressive Strength (UCS) Failure Mode is indicated by (B-Bulge, S-Shear, P-Penetrometer). The SPT (N value) is the sum of the last two blow values in each sampling zone (ASHTO T206) BBS, from 137 (Rev. 8-99)



REVISIONS		ILLINOIS DEPARTMENT OF TRANSPORTATION F.A.I. 90/94 (DAN RYAN EXPRESSWAY) GARFIELD BLVD TO 31ST STREET (NB LOCAL LANES) SOIL BORING LOGS FOR SIGN STRUCTURE FOUNDATIONS SCALE: NONE DATE: June 9, 2006	DRAWN BY: SLW CHECKED BY: PJD
NAME	DATE		

SB-1

6/7/2006 12:26:09 AM P:\P40468\GWIN\8-CNRS 18 & 19\SW\Chfr 18\Signing\SS1856122.dwg