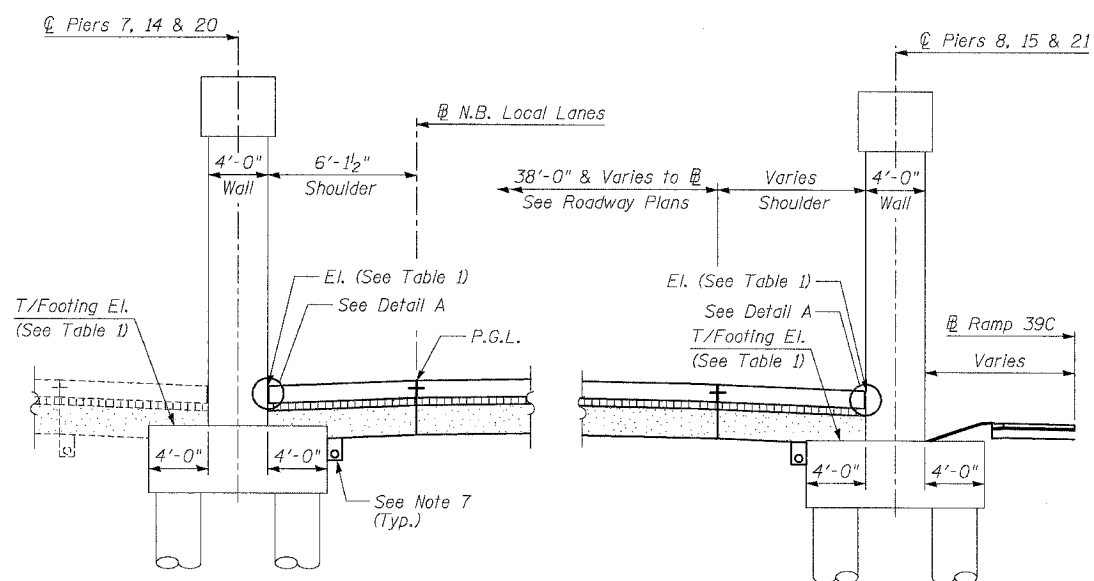
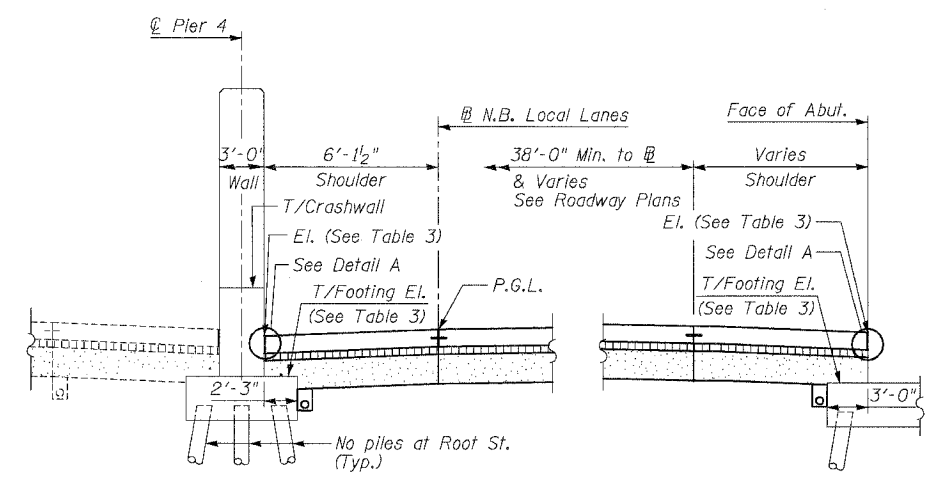


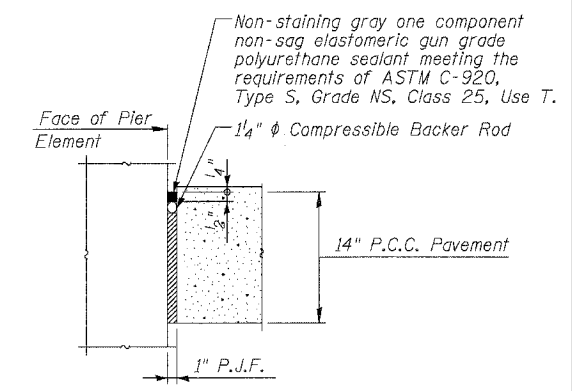
F.A.I.	SECTION	COUNTY	TOTAL SHEETS	SHEET NO.
94/90	*	COOK	565	354
STA.	TO STA.			
FED. ROAD DIST. NO.	ILLINOIS	FED. AID PROJECT		
62301 * (2021-922 PT2 ETC 2324.6-1P) R-10				



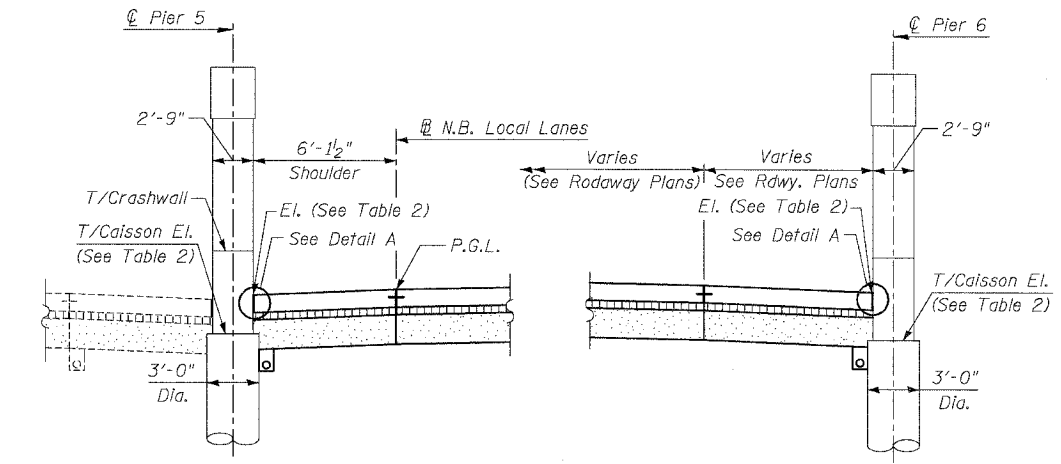
SHOULDER DETAIL AT OVERHEAD RAILROAD
Near 40th Street (S.N.'s 016-0138, 0139 & 0140)



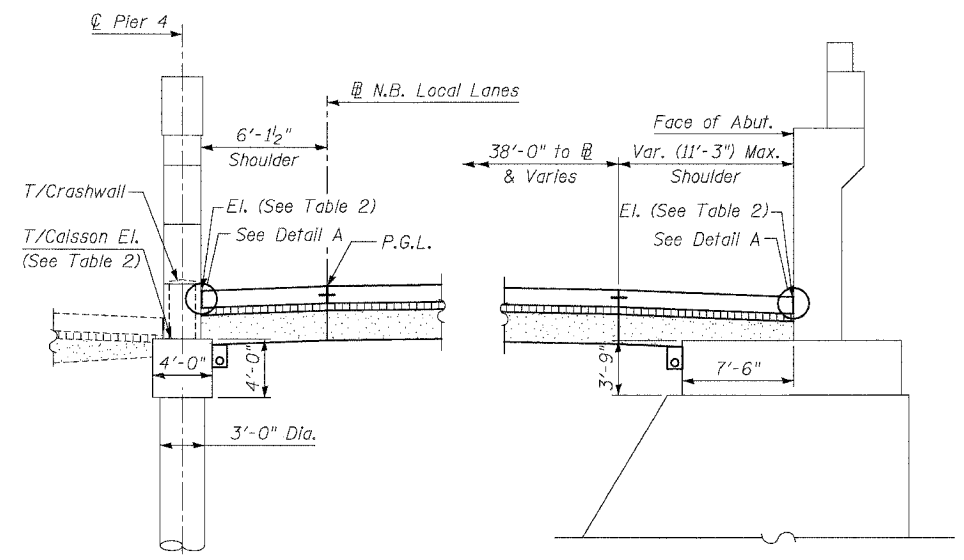
SHOULDER DETAIL AT 43rd STREET (S.N. 016-1155)
Root Street (S.N. 016-1154) Similar as noted



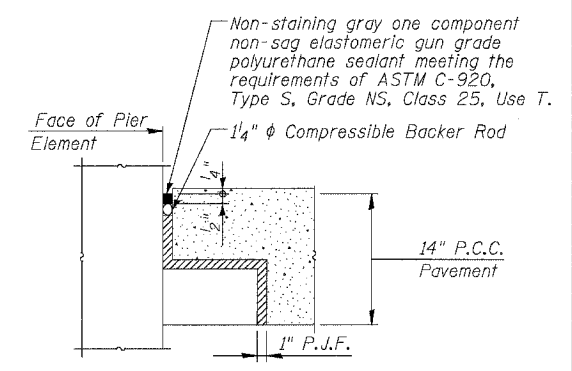
DETAIL A
Cost of P.J.F., Backer Rod and sealant included with PCC Shoulder



SHOULDER DETAIL AT OVERHEAD BRIDGES
For 31st Street (S.N. 016-1159)
33rd Street (S.N. 016-1158)
35th Street (S.N. 016-1160)



SHOULDER DETAIL AT 39th STREET (S.N. 016-0398)



DETAIL B
Cost of P.J.F., Backer Rod and sealant included with PCC Shoulder

Notes:

- See Typical Sections for Composition of Exist. & Prop. Pavement.
- All views looking North.
- Contractor shall use caution during pavement removal and excavation operations around existing overhead bridge foundations.
- Top of Rock El. at Root Street is approx. El. -12.0
- All dimensions at right angles to Expressway.
- Provide 10 mil polyethylene bond breaker and pour shoulder pavement directly on pier footing.
- Adjust underdrain location to clear foundation as directed by the Engineer.
- Use Detail B where pavement encroaches within bridge foundation.
- See Roadway Plans and Details for locations of Single Face Barriers in front of bridge piers. Eliminate backer rod and sealant at these locations and adjust details as directed by the Engineer. RDT-21

TABLE 1

PIER	T/FOOTING EL.	T/SHOULDER EL.	
		MAX.	MIN.
7	-1.37	0.6	0.5
8	-1.44	0.6	0.5
14	-0.57	1.3	1.2
15	-0.87	1.5	1.4
20	-2.66	-0.4	-0.7
21	-2.76	-1.0	-1.5

TABLE 2

LOCATION	PIER	T/CAISSON EL.	T/SHOULDER EL.	
			MAX.	MIN.
31st St.	5	-6.44	-4.4	-4.7
33rd St.	6	-5.64	-4.8	-5.0
33rd St.	5	-5.36	-3.6	-3.8
35th St.	6	-4.97	-3.9	-4.1
35th St.	5	-3.89	-1.7	-2.0
39th St.	6	-3.69	-1.6	-1.8
39th St.	4	-11.30	-5.7	-6.2
E. Abut.		-8.25	-5.4	-6.2

TABLE 3

LOCATION	PIER	T/FOOTING EL.	T/SHOULDER EL.	
			MAX.	MIN.
Root St.	4	-8.0	-3.9	-4.5
43rd St.	Abut	-8.0	-4.0	-4.5
43rd St.	4	-7.0	-4.4	-5.0
43rd St.	Abut	-7.0	-4.4	-4.9

LEGEND

- Concrete Pavement
- Stabilized Sub-base
- Sub-base Granular material

REVISIONS

NAME	DATE

ILLINOIS DEPARTMENT OF TRANSPORTATION
F.A.I. 94/90 (DAN RYAN EXPRESSWAY)
GARFIELD BLVD TO 31ST STREET (NB LOCAL LANES)
ROADWAY DETAILS
PAVEMENT DETAILS AT
CROSS STREET BRIDGES

SCALE: NTS
DATE: JUNE 9, 2006
DRAWN BY: MTR
CHECKED BY: BLU

BOWMAN, BARRETT & ASSOCIATES INC.
CONSULTING ENGINEERS
Chicago, Illinois
312.228.0100
www.bbandainc.com

6/7/2006 14:34 PM