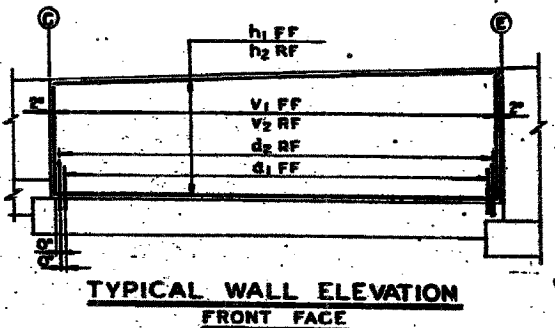
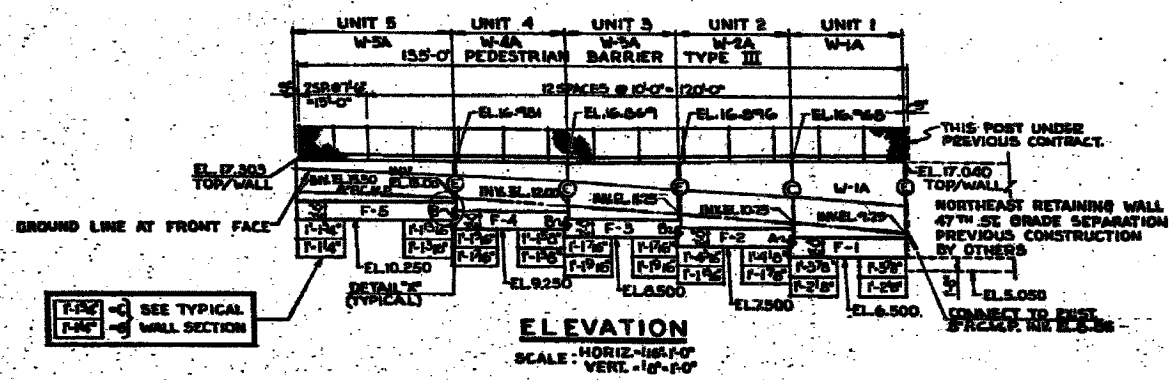
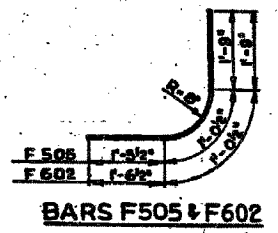
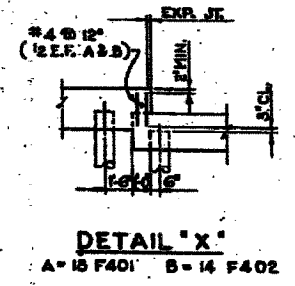


| BAR LIST | | | | | |
|----------|-----|------|--------|-------|--------|
| *BAR | NO. | SIZE | LENGTH | SHAPE | WEIGHT |
| F 401 | 60 | 4 | 7'-0" | | 75 |
| F 501 | 53 | 5 | 7'-0" | | 424 |
| F 502 | 38 | 5 | 25'-9" | | 1821 |
| F 503 | 8 | 5 | 25'-9" | | 299 |
| F 504 | 49 | 5 | 2'-0" | | 182 |
| F 505 | 80 | 5 | 4'-1" | | 375 |
| F 506 | 175 | 5 | 5'-8" | | 1054 |
| V 501 | 52 | 6 | 7'-0" | | 599 |
| V 502 | 52 | 6 | 4'-0" | | 358 |
| V 503 | 35 | 5 | 6'-9" | | 301 |
| V 504 | 35 | 5 | 7'-2" | | 262 |
| V 505 | 35 | 5 | 6'-2" | | 225 |
| V 506 | 35 | 5 | 5'-0" | | 201 |
| V 507 | 49 | 5 | 4'-7" | | 234 |
| H 501 | 17 | 5 | 24'-9" | | 439 |
| H 502 | 15 | 6 | 28'-2" | | 409 |
| H 503 | 7 | 5 | 24'-9" | | 254 |



| UNIT | WALL TYPE | FOOTING | | | | STEM | | | | | | | |
|------|-----------|-----------|------|--------------------|-------------|-----------|-------|--------------------|-------------|---|----|------|------|
| | | FTB. MARK | BAND | REINF. IN EA. BAND | NO. OF BARS | STEM MARK | BAND | REINF. IN EA. BAND | NO. OF BARS | | | | |
| 1 | F-1 | T1 | 27 | 5 | 12 | F501 | I-BOT | V1 | 9 | 5 | 36 | V501 | I-FF |
| | | T2 | 28 | 6 | 12 | F601 | I-TOP | V2 | 26 | 5 | 12 | V501 | I-RF |
| | | d1 | 5 | 5 | 24 | F502 | I-BOT | H1 | 6 | 5 | 18 | H501 | I-FF |
| | | d2 | 6 | 5 | 18 | F502 | I-TOP | H2 | 4 | 5 | 36 | H501 | I-RF |
| | | d3 | 9 | 5 | 36 | F504 | I-FF | V1 | 9 | 5 | 36 | V502 | I-FF |
| 2 | F-2 | T1 | 26 | 5 | 12 | F501 | I-BOT | V1 | 9 | 5 | 36 | V502 | I-FF |
| | | T2 | 26 | 6 | 12 | F601 | I-TOP | V2 | 26 | 5 | 12 | V502 | I-RF |
| | | d1 | 5 | 5 | 24 | F502 | I-BOT | H1 | 5 | 5 | 18 | H502 | I-FF |
| | | d2 | 6 | 5 | 18 | F502 | I-TOP | H2 | 3 | 5 | 36 | H502 | I-RF |
| | | d3 | 9 | 5 | 36 | F504 | I-FF | V1 | 9 | 5 | 36 | V504 | I-FF |
| 3 | F-3 | T1 | 25 | 5 | 12 | F506 | I-BOT | V1 | 9 | 5 | 36 | V503 | I-FF |
| | | T2 | 25 | 6 | 12 | F602 | I-TOP | V2 | 26 | 5 | 12 | V503 | I-RF |
| | | d1 | 4 | 5 | 24 | F502 | I-BOT | H1 | 4 | 5 | 18 | H501 | I-FF |
| | | d2 | 5 | 5 | 18 | F502 | I-TOP | H2 | 3 | 5 | 36 | H501 | I-RF |
| | | d3 | 9 | 5 | 36 | F504 | I-FF | V1 | 9 | 5 | 36 | V504 | I-FF |
| 4 | F-4 | T1 | 26 | 5 | 12 | F506 | I-BOT | V1 | 9 | 5 | 36 | V504 | I-FF |
| | | T2 | 26 | 6 | 12 | F602 | I-TOP | V2 | 26 | 5 | 12 | V504 | I-RF |
| | | d1 | 4 | 5 | 24 | F502 | I-BOT | H1 | 4 | 5 | 18 | H502 | I-FF |
| | | d2 | 5 | 5 | 18 | F502 | I-TOP | H2 | 3 | 5 | 36 | H502 | I-RF |
| | | d3 | 9 | 5 | 36 | F504 | I-FF | V1 | 13 | 5 | 36 | V505 | I-FF |
| 5 | F-5 | T1 | 26 | 5 | 12 | F506 | I-BOT | V1 | 13 | 5 | 36 | V505 | I-FF |
| | | T2 | 26 | 6 | 12 | F602 | I-TOP | V2 | 36 | 5 | 12 | V505 | I-RF |
| | | d1 | 4 | 5 | 24 | F503 | I-BOT | H1 | 4 | 5 | 18 | H505 | I-FF |
| | | d2 | 5 | 5 | 18 | F503 | I-TOP | H2 | 3 | 5 | 36 | H505 | I-RF |
| | | d3 | 9 | 5 | 36 | F504 | I-FF | | | | | | |



NOTE:
FOR GENERAL NOTES & STANDARD DETAILS SEE SHEET N°81
FOR DETAILS, DIMENSIONS, ETC. OF WALL TYPES 1 & 2 SEE SHEET N°96
⊕ = EXPANSION JOINT
⊙ = CONSTRUCTION JOINT
⊗ = INDICATES TEST BORING
⊙ = INDICATES TEST PILE
FOR ADDITIONAL PLAN GEOMETRICS SEE ALIGNMENT & TIES STA. 100+00 TO STA. 115+00 SEE SHEET N°16

| SOILS DATA | |
|--------------|------------------------------------|
| FOOTINGS | DESIGN CONDITION |
| ALL FOOTINGS | CONCRETE PILES EQL LENGTH = 25 FT. |

| BILL OF MATERIAL | | |
|-----------------------------------|----------|----------|
| ITEM | UNIT | QUANTITY |
| POROUS GRANULAR BACKFILL | CYLD. | 95 |
| CLASS A EXCAVATION FOR STRUCTURES | CYLD. | 311 |
| CLASS 1 CONCRETE | CYLD. | 101.5 |
| REINFORCEMENT BARS | POUND | 6607 |
| DRIVING CONCRETE PILES | LIN. FT. | 900 |
| FURNISHING CONCRETE PILES | LIN. FT. | 900 |
| TEST PILE CONCRETE | EACH | 1 |
| PROP. CORR. MET. PIPE-8" | LIN. FT. | 194 |
| PEDESTRIAN BARRIER TYPE 3 | LIN. FT. | 195 |

ILLINOIS DIVISION OF HIGHWAYS
SOUTH EXPRESSWAY
RETAINING WALL
E-4

SHEET 17 OF 24

FOR INFORMATION ONLY

| REVISIONS | |
|-----------|------|
| NAME | DATE |
| | |
| | |
| | |
| | |
| | |

ILLINOIS DEPARTMENT OF TRANSPORTATION
F.A.I. 94/90 (DAN RYAN EXPRESSWAY)
GARFIELD BLVD TO 31ST STREET (NB LOCAL LANES)
COOK COUNTY
STA. 4529+75.90 TO STA. 4537+30.74
RETAINING WALL N-47N-R
EXISTING RETAINING WALL PLAN 2
S.N. 016-W977
SCALE: NTS
DATE: JUNE 9, 2006
DRAWN BY: MTR
CHECKED BY: BLU

BOWMAN, BARRETT & ASSOCIATES INC.
CONSULTING ENGINEERS
Chicago, Illinois
312.228.0100
www.bbainc.com

6/17/2006 3:49:05 PM