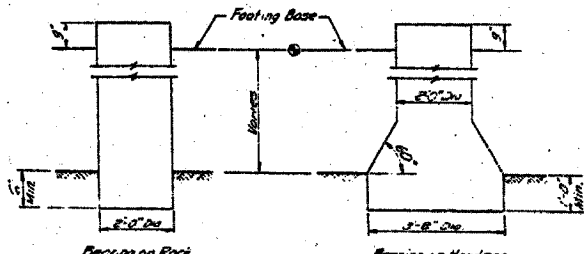


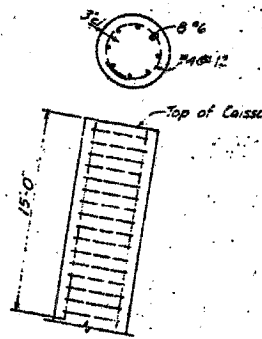
STATE OF ILLINOIS  
DEPARTMENT OF PUBLIC WORKS & BUILDINGS  
DIVISION OF HIGHWAYS

ROAD DIST. NO.	SEC.	LAPEL	SENA	FS	TOTAL SHEETS	SHEET NO.
FBI-94	187				65	19
STA.	TO STA.					
62301	62301					

F.A.I.	SECTION	COUNTY	TOTAL SHEETS	SHEET NO.
94/90		COOK	565	392
STA.	TO STA.			
62301	62301			

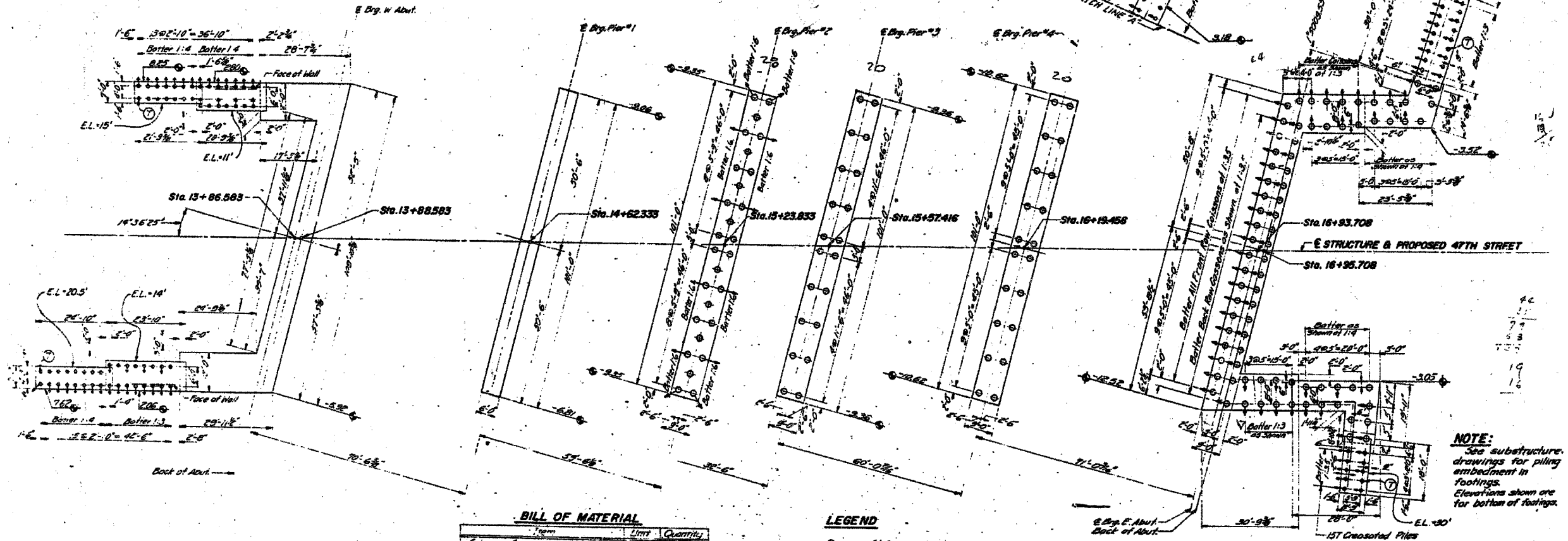


CAISSON DETAILS



PILE DATA

Type: Creosoted with Metal Shoes  
(Incidental to cost of piling)  
Capacity: 15T  
\* No. Req'd: 166 (Includes 5 Test Piles)  
Est Length: See Plans - "E."  
\* Does not include approach slab pile bents.



NOTE:  
See substructure drawings for piling embedment in footings.  
Elevations shown are for bottom of footings.

BILL OF MATERIAL

Item	Unit	Quantity
Caisson Concrete	Cu Yds	238.7
Steel Casings	Lin. Ft.	1000
Steel Casings Left in Place	Lin. Ft.	500
Reinforcement Bars	Lbs.	42,225
Rock Excav. for Struct.	Cu Yds	3.6
Creosoted Piles (Up to 20')	Lin. Ft.	573
Creosoted Piles (20' to 39')	Lin. Ft.	3113
Test Piles (Timber)	Each	5

LEGEND

- 24" Caissons
- Creosoted Piles
- ⊙ Indicates Permanent Test Piles
- ⊕ Indicates Battered Caissons or Piles

ILLINOIS DIVISION OF HIGHWAYS  
SOUTH EXPRESSWAY  
47TH ST. BRIDGE  
CAISSON AND PILING PLAN  
SCALE: NOTED DATE: SEPT. 1960

SHEET 20 OF 24

FOR INFORMATION ONLY

DESIGNED DWH	EXAMINED
CHECKED DN	PASSED
DRAWN RY	APPROVED
CHECKED AS	

BOWMAN, BARRETT & ASSOCIATES INC.  
CONSULTING ENGINEERS  
Chicago, Illinois  
312.228.0100  
www.bbainc.com

ILLINOIS DEPARTMENT OF TRANSPORTATION  
F.A.I. 94/90 (DAN RYAN EXPRESSWAY)  
GARFIELD BLVD TO 31ST STREET (NB LOCAL LANES)  
COOK COUNTY  
STA. 4529+75.90 TO STA. 4537+30.74  
RETAINING WALL N-47N-R  
EXISTING RETAINING WALL PLAN 5  
S.N. 016-W977  
SCALE: NTS  
DATE: JUNE 9, 2006  
DRAWN BY: KMW  
CHECKED BY: BLU

3-4660 TM 6/7/2006