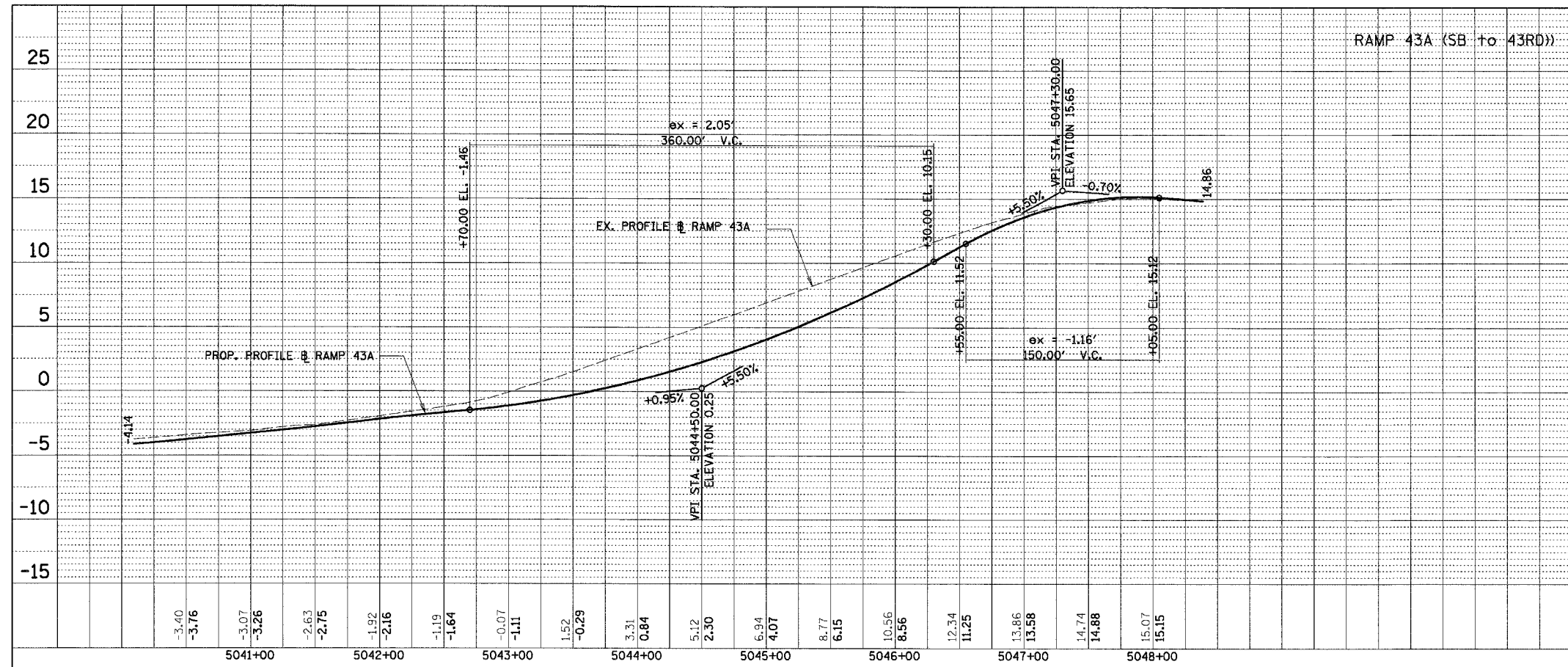
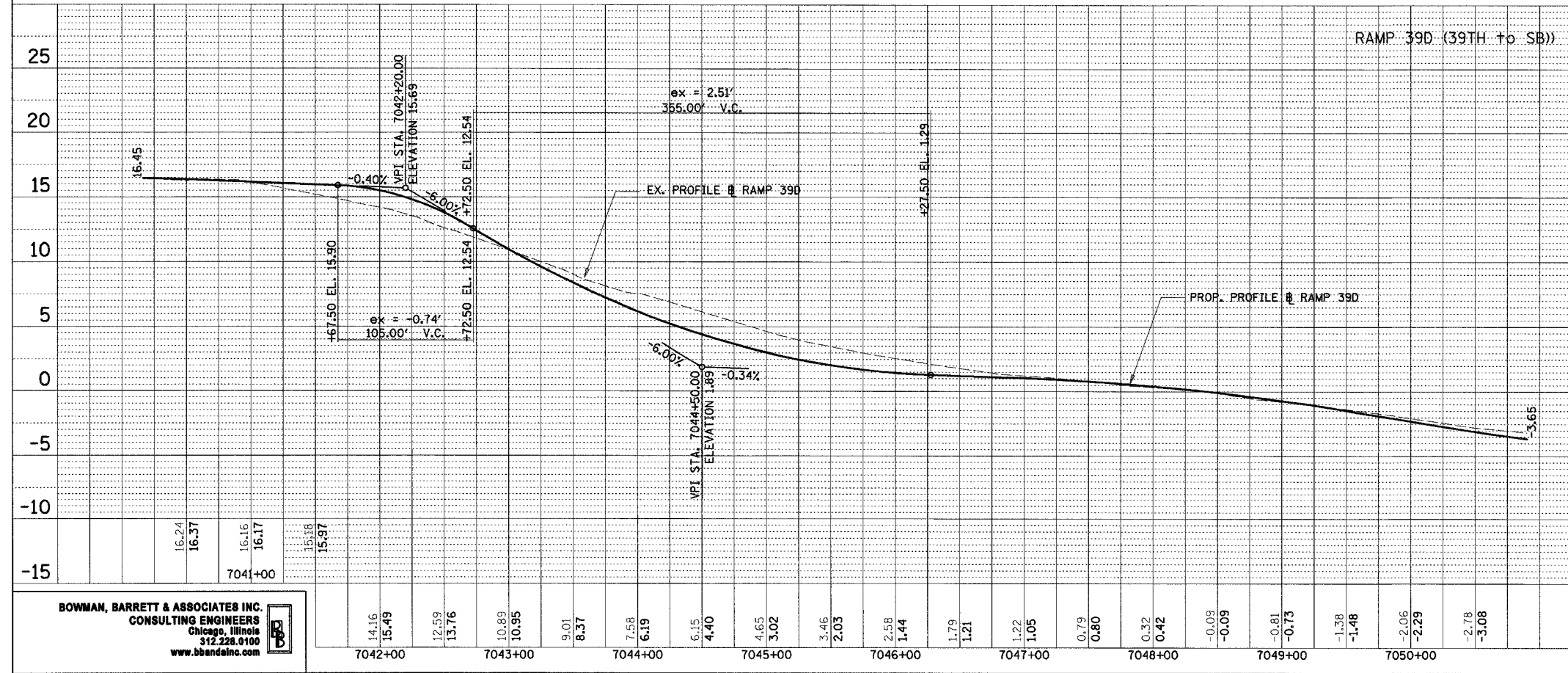


F.A.I.	SECTION	COUNTY	TOTAL SHEETS	SHEET NO.
94/90		COOK	588	77
STA.		TO STA.		
FED. ROAD DIST. NO.		ILLINOIS FED. AID PROJECT		

PLAN	SURVEYED	BY	DATE
	ALIGNED		
	CHECKED		
	RT. OF WAY		
	CHECKED		
	NO.		



PLAN	SURVEYED	BY	DATE
	ALIGNED		
	CHECKED		
	RT. OF WAY		
	CHECKED		
	NO.		



BOWMAN, BARRETT & ASSOCIATES INC.
 CONSULTING ENGINEERS
 Chicago, Illinois
 312.228.0100
 www.bbainc.com

REVISIONS	
NAME	DATE
REVISED	6/23/06

ILLINOIS DEPARTMENT OF TRANSPORTATION
 F.A.I. 94/90 (DAN RYAN EXPRESSWAY)
 GARFIELD BLVD TO 31ST STREET (SB LOCAL LANES)

PROFILES - RAMPS 43A & 39D

1" = 5' VERTICAL
 SCALE: 1" = 50' HORIZONTAL
 DATE: 06/09/06

DRAWN BY: JDC
 CHECKED BY: RS

PRO-10

6/23/2006 11:04:55 AM