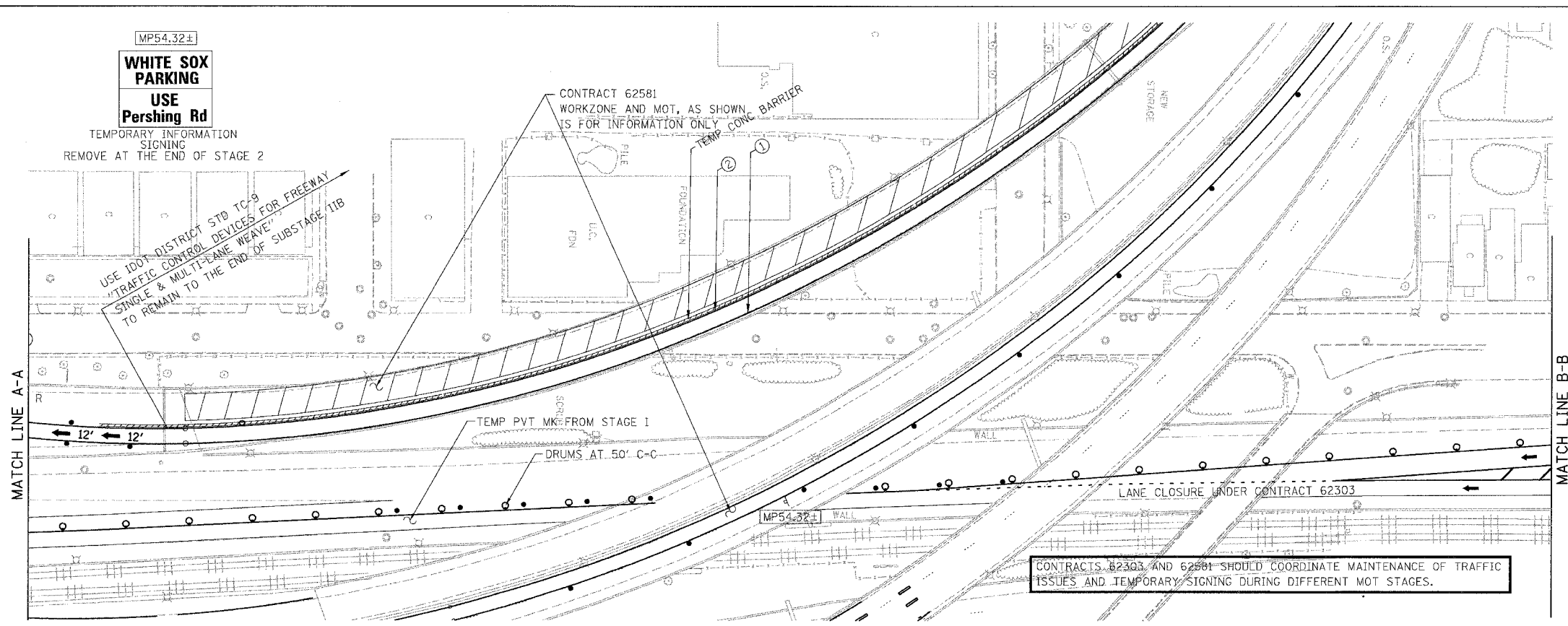
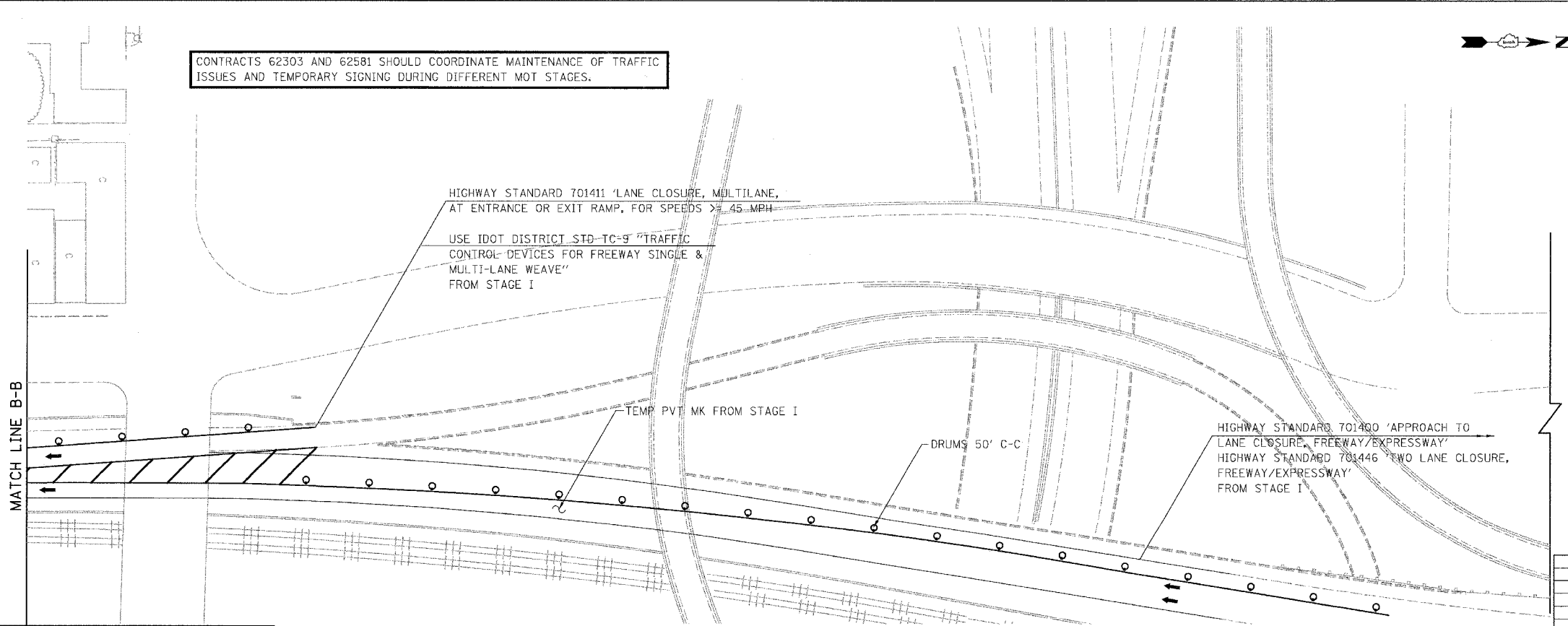


F.A.I.	SECTION	COUNTY	TOTAL SHEETS	SHEET NO.
94/90		COOK	588	103
STA.	TO STA.			
FED. ROAD DIST. NO.		ILLINOIS	FED. AID PROJECT	
62303		• (2021-922 PT2 ETC 2324.6-1P) R-11		



- LEGEND:**
- 1 → LANE NUMBER AND DIRECTION OF TRAFFIC
 - ▨ WORK AREA
 - ▨ TEMPORARY PAVEMENT
 - ⊙ IMPACT ATTENUATORS, TEMPORARY (NON-REDIRECTIVE), TEST LEVEL 3
 - DRUM OR BARRICADE TYPE II WITH STEADY BURNING LIGHT
 - ⊥ BARRICADE TYPE III
 - ▬ TEMPORARY CONCRETE BARRIER
 - ① LINE 4" (YELLOW EDGE)
 - ② LINE 4" (WHITE EDGE)
 - ③ LINE 4" (SKIP DASH, 6' SKIP - 2' DASH, WHITE)
 - ④ LINE 5" (SKIP DASH, 30' SKIP - 10' DASH, WHITE)
 - ⑤ LINE 8" (WHITE GORE LINE)
 - ⑥ LINE 8" (SKIP DASH, 12' SKIP - 3' DASH, WHITE)
 - ⑦ LINE 12" (DIAGONAL, 30' C-C, WHITE)
 - ⑧ LETTERS AND SYMBOLS
 - ES-XXX-XX EXISTING OVERHEAD OR CANTILEVER SIGNS
 - GS-XXX-XX EXISTING POST MOUNTED SIGNS
 - TS-XXX-XX TEMPORARY SIGNS
- +XX.XX STATION PROVIDED FROM THE ± SB I-90/94 EXPRESS LANES
(+XX.XX) STATION PROVIDED FROM THE ± SB I-90/94 LOCAL LANES



SB I-94/90 EXPRESS LANES TEMPORARY PAVEMENT MARKINGS WERE INSTALLED IN STAGE I AND SUBSTAGE IA, UNLESS OTHERWISE SPECIFIED IN STAGE 2
CROSS OVER RAMP TEMPORARY PAVEMENT MARKINGS INSTALLED IN PREVIOUS STAGE TO REMAIN TO NEXT STAGE, UNLESS OTHERWISE SPECIFIED.

BOWMAN, BARRETT & ASSOCIATES INC.
CONSULTING ENGINEERS
Chicago, Illinois
312.228.0100
www.bbainc.com

REVISIONS	NAME	DATE

0 50' 100'

MOT-209

ILLINOIS DEPARTMENT OF TRANSPORTATION
F.A.I. 94/90 (DAN RYAN EXPRESSWAY)
GARFIELD BLVD TO 31ST STREET (SB LOCAL LANES)
SUGGESTED STAGES OF CONSTRUCTION
AND TRAFFIC CONTROL
STAGE 2

SCALE: 1"=50'
DATE: 06/09/06

DRAWN BY: RA
CHECKED BY: RS

6/8/2006 12:01:23 PM