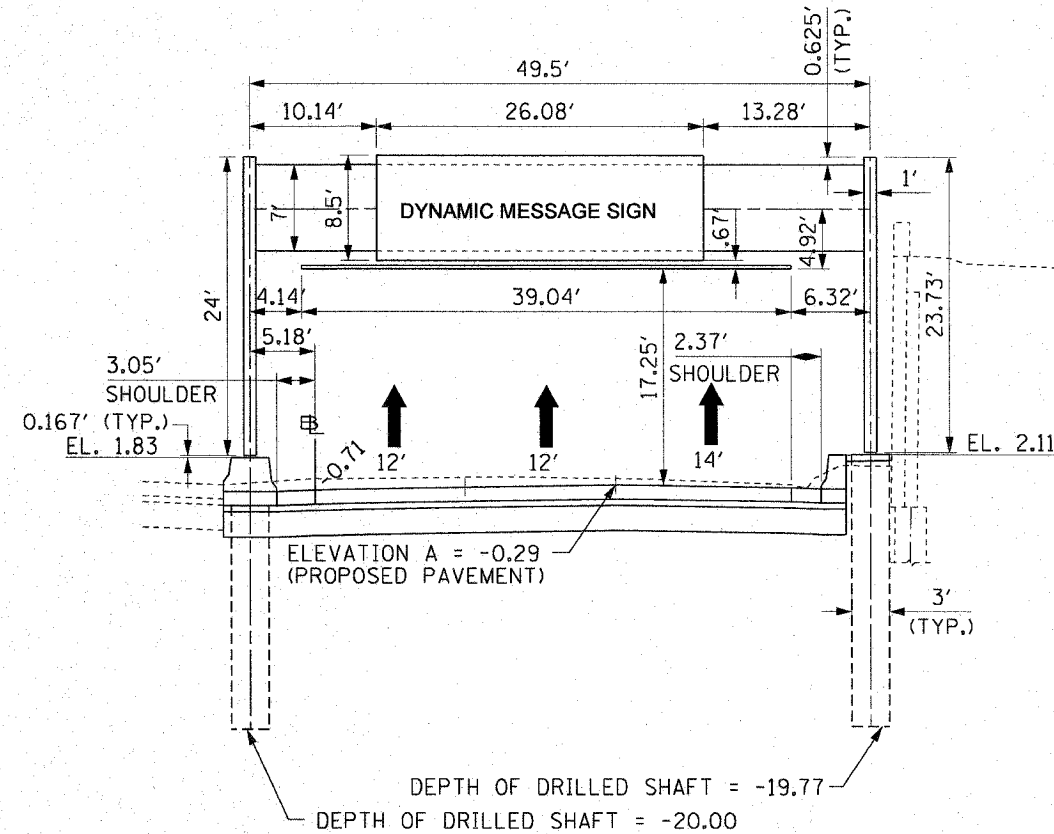


F.A.I. RTE.	SECTION	COUNTY	TOTAL SHEETS	SHEET NO.
90/94	*	COOK	588	251
STA.		TO STA.		
62303		ILLINOIS FED. AID PROJECT		
(2021-922 PT2 ETC 2324.6-1P) R-11				

TYPE III-A 12" PIPE TRUSS SUPPORT FRAME



1S0161094R057.8
MOUNTING DETAIL
PROPOSED OVERHEAD SIGN STRUCTURE
FOR DYNAMIC MESSAGE SIGN
STA. 3475+92.44 S.B. I-90/94
LOOKING SOUTH

NOTES:

1. PROPOSED PAVEMENT FOR LOCAL LANES IS SHOWN FOR INFORMATION ONLY.
2. REFER TO ELECTRICAL INFRASTRUCTURE PLANS FOR ORIENTATION AND LOCATION OF THE CONDUIT EMBEDDED IN THE OVERHEAD SIGN FOUNDATIONS.
3. THE DYNAMIC MESSAGE SIGN SHALL BE FASTENED TO THE SIGN TRUSS BY THE CONTRACT 62303 CONTRACTOR. THE CONTRACTOR SHALL COORDINATE THE ERECTION OF THE SIGN TRUSS WITH CONTRACT 62583.
4. THE FABRICATOR SHALL COORDINATE WITH THE MANUFACTURER OF THE DYNAMIC MESSAGE SIGN (DMS) TO DETERMINE THE ACTUAL SIZE, WEIGHT AND MOUNTING DETAILS OF THE DMS BEFORE ORDERING OR FABRICATING ANY MATERIALS FOR THE TRUSS OR WALKWAY/SIGN SUPPORTS.

CTE | AECOM

REVISIONS	
NAME	DATE

SGN-1
ILLINOIS DEPARTMENT OF TRANSPORTATION
F.A.I. 90/94 (DAN RYAN EXPRESSWAY)
GARFIELD BLVD TO 31ST STREET (SB LOCAL LANES)
PROPOSED DYNAMIC MESSAGE SIGN
INSTALLATION STA. 3475+92.44
SCALE: NONE
DATE: June 9, 2006
DRAWN BY: JSS
CHECKED BY: MJP

P:\P40468\CIVIL\6-Cntrs IB & 19-S\NCHT 19-Signing\SS9002A.dwg

7/13/2006 AM