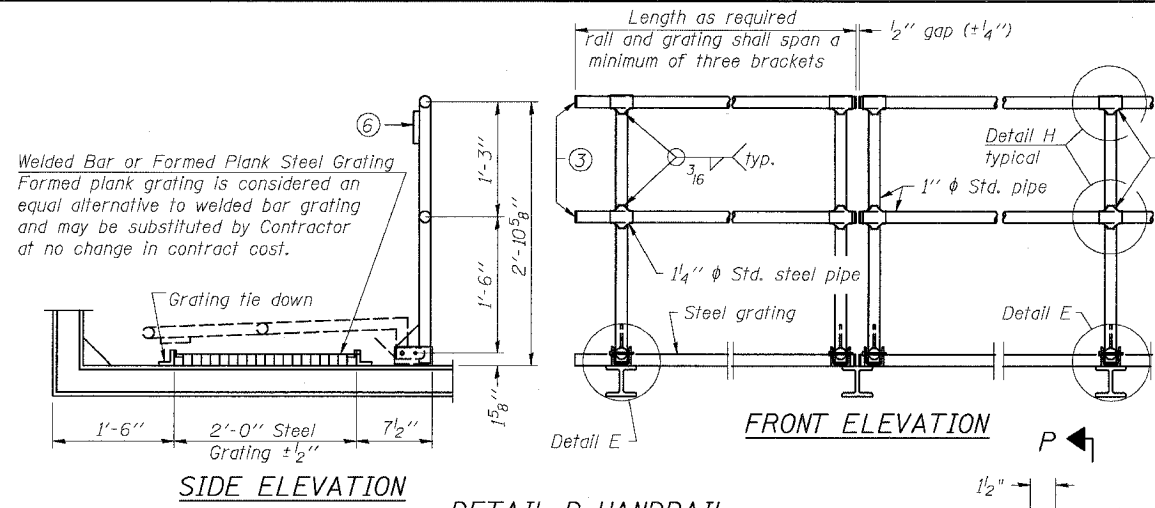
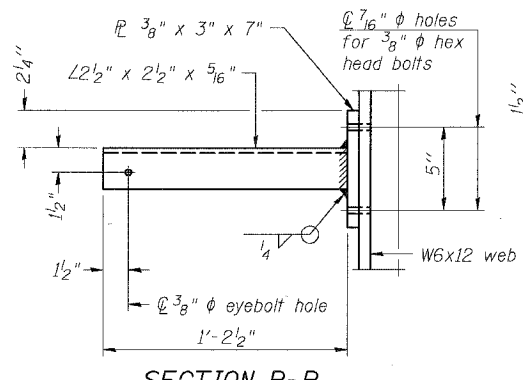


STATE OF ILLINOIS
DEPARTMENT OF TRANSPORTATION

ROUTE NO.	SECTION	COUNTY	TOTAL SHEETS	SHEET NO.
94/90	*	COOK	588	300
FED. ROAD DIST. NO. 7		ILLINOIS	FED. ROAD PROJECT	SHEETS
* 62303 (2021-922 PT2 ETC 2324.6-1P) R-11		Face-to-Face of angles equals grating width plus 1/8" (For welded angles)		



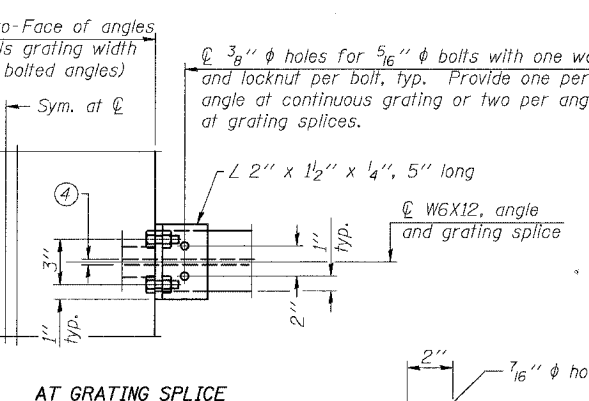
DETAIL D HANDRAIL



SECTION P-P

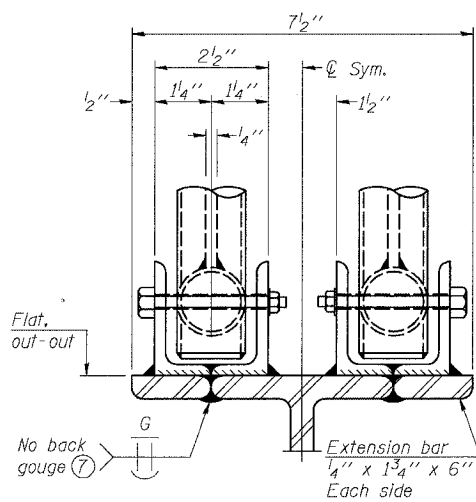
ALTERNATE FORMED PLANK GRATING DETAILS

Plank Grating: nominal depth = 2 1/2" (± 1/2"); perforated or expanded steel sheet with a non-skid surface (non-serrated) concentrated load capacity = 500 lbs. with 6'-0" clear span.



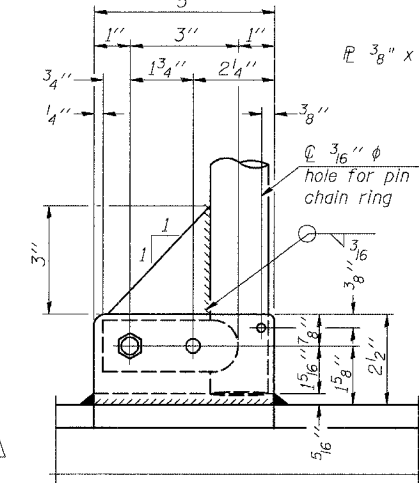
GRATING CONTINUOUS AT GRATING SPLICE

VIEW W-W



ELEVATION AT HANDRAIL JOINT

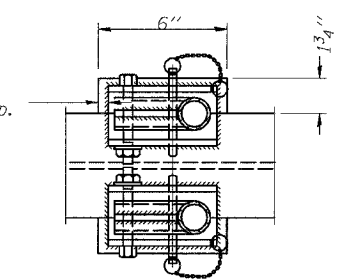
(Details not shown same as "FRONT ELEVATION")



SIDE ELEVATION

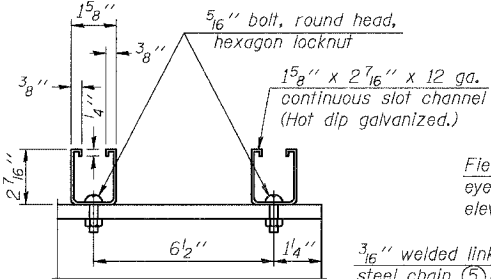
SAFETY CHAIN ATTACHMENT

(With Sign Present)
Items not shown same as "SIDE ELEVATION" and "SAFETY CHAIN"



PLAN AT HANDRAIL JOINT

(For Details, see Elevations.)



SECTION F-F LIGHTING FIXTURE MOUNTS

(If required)

NOTES

- Drilling holes in grating may be done in shop or field, based on Contractor's preference and subject to accurate alignment. Field drilled holes must be touched up with galvanized paint.
- Horizontal rail member shall be continuous thru 1 1/4" * pipe. Provide 7/16" * hole in fitting for 3/8" * bolt. Field drill 7/16" * hole in horizontal rail member. Provide washer and locknut for bolt. *Use 5/16" eyebolts in 7/16" * holes on top rail at ends only.*
- Install standard force-fit end caps or weld 1/8" end plates with 1/8" c.f.w. and grind smooth. *All rail ends.*
- 3/8" * 1/4" * gap between grating panels at splice.
- Chain to be hot dip galvanized after manufacture or stainless steel suitable for prolonged exterior exposure. Approximately 3'-6" long chain per location. Maximum sag with handrail erected = 4".
- 1/8" x 1/2" x 2" welded to handrail posts to protect locations that contact grating.
- Extrusions may be used in lieu of details shown, with approval by Engineer.
- Field cut ends of light support channels shall be free of burrs or hazardous projections and coated with zinc-rich primer or equivalent.

FRONT ELEVATION

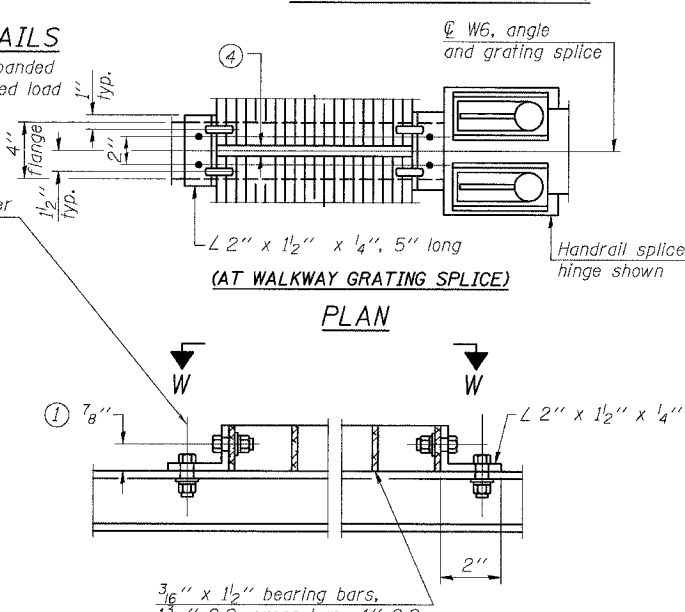
(See above Elevations for dimensions.)

NUMBER	REVISION	DATE

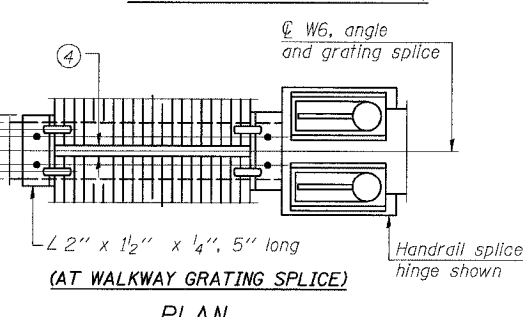
DESIGNED	- MSA
CHECKED	- AS
DRAWN	- MD
CHECKED	- MSA

EXAMINED	20
PASSED	

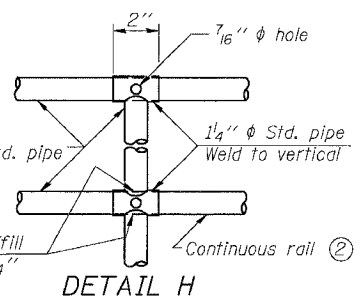
BM-4 Special 1/7/05



WALKWAY GRATING CONTINUOUS



PLAN

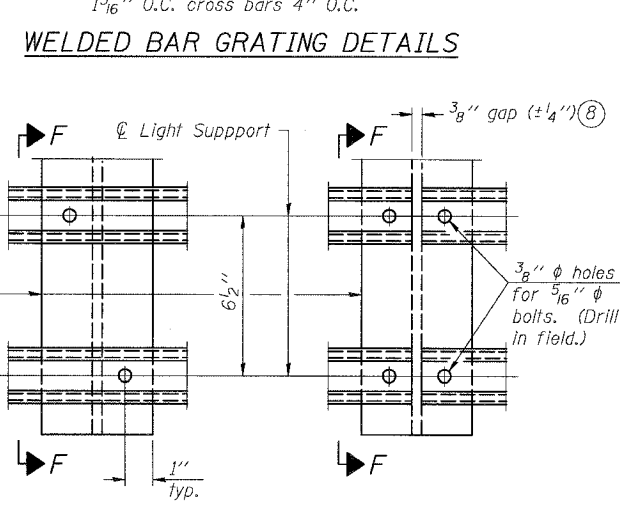


DETAIL H

Welds 3/16" continuous

SAFETY CHAIN

One (1) required for each end of each walkway.



WELDED BAR GRATING DETAILS

DETAIL F

DETAIL G

SGN-50

BRIDGE MOUNT SIGN STRUCTURES
WALKWAY DETAILS

ILLINOIS DEPARTMENT OF TRANSPORTATION
F.A.I. 94/90 (DAN RYAN EXPRESSWAY)
GARFIELD BLVD TO 31st STREET (SB LOCAL LANES)
OVERHEAD SIGN STRUCTURES
(BRIDGE MOUNTED)