

F.A.I. RTE.	SECTION	COUNTY	TOTAL SHEETS	SHEET NO.
90/94		COOK	588	319
STA. 1482+50.00		TO STA. 1494+50.00		
FED. ROAD DIST. NO. 1		ILLINOIS	FED. AID PROJECT	
62303		(2021-922 PT2 ETC 2324.6-1P) R-11		

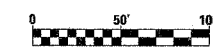
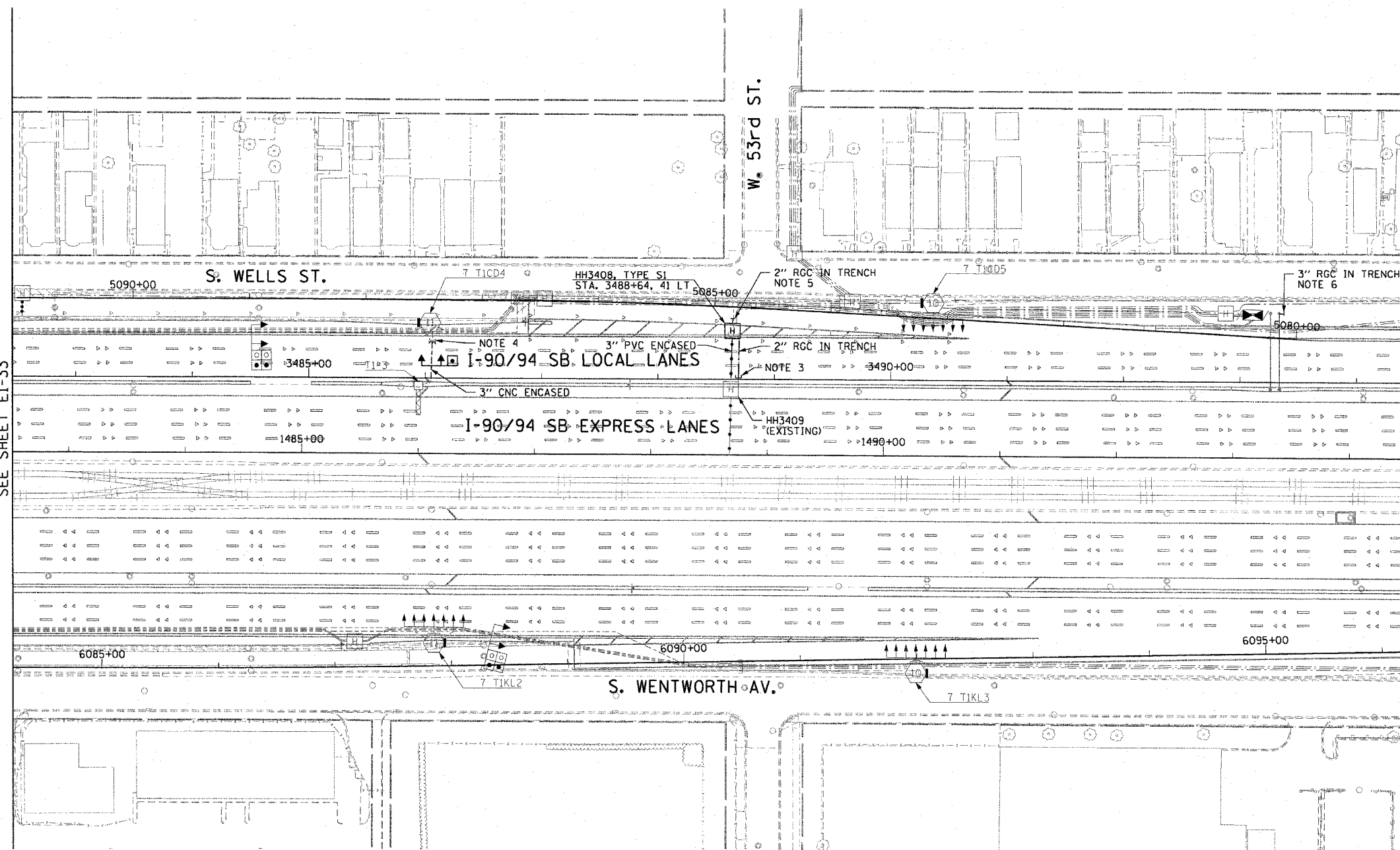


NOTES:

1. SEE DRAWINGS EI-100 AND EI-101 FOR ELECTRICAL SYMBOLS AND ABBREVIATIONS.
2. SEE DRAWINGS EI-102, EI-103 AND EI-104 FOR TYPICAL HANDHOLE INSTALLATION DETAILS.
3. THE CONTRACTOR SHALL LOCATE THE EXISTING CONDUIT STUB-OUTS INSTALLED IN IDOT CONTRACT NO. 62302 AND CONNECT THE PROPOSED CONDUIT.
4. THE CONTRACTOR SHALL LOCATE THE EXISTING 3" RGS CONDUIT STUB-OUT INSTALLED IN IDOT CONTRACT NO. 62302 AND CONNECT THE PROPOSED CONDUIT TO THE 4" CNC INSTALLED IN CONTRACT NO. 62586. PROVIDE 4" TO 3" REDUCED FITTING.
5. THE CONTRACTOR SHALL LOCATE THE EXISTING CONDUIT STUB-OUTS INSTALLED IN IDOT CONTRACT NO. 62586 AND CONNECT TO HH3408.
6. EXTEND CONDUIT STUB-OUT 2' BEYOND THE SIGN STRUCTURE FOUNDATION, CAP FOR FUTURE USE.
7. UNLESS NOTED OTHERWISE, ALL ITEMS AND WORK SHOWN IN HEAVY LINE WEIGHT ON THIS DRAWING ARE PROPOSED NEW ITEMS AND WORK.

MATCH LINE STA. 1482+50
SEE SHEET EI-33

MATCH LINE STA. 1494+50
SEE SHEET EI-35



EI-34

CTE | AECOM

REVISIONS	
NAME	DATE

ILLINOIS DEPARTMENT OF TRANSPORTATION
F.A.I. 90/94 (DAN RYAN EXPRESSWAY)
GARFIELD BLVD TO 31ST STREET (SB LOCAL LANES)

ELECTRICAL INFRASTRUCTURE PLAN

SCALE: 1"=50'
DATE: June 9, 2006

DRAWN BY: HAR
CHECKED BY: JPC

06/07/2006 09:59:08 AM