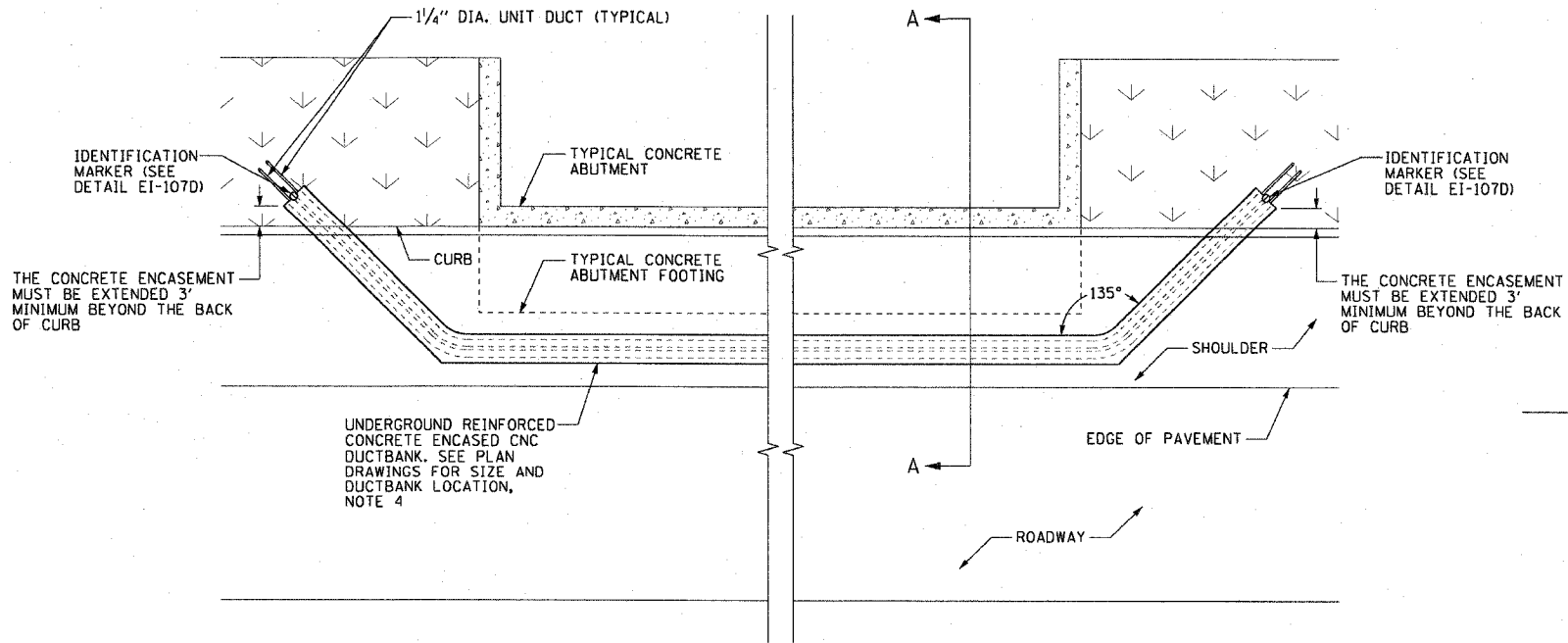
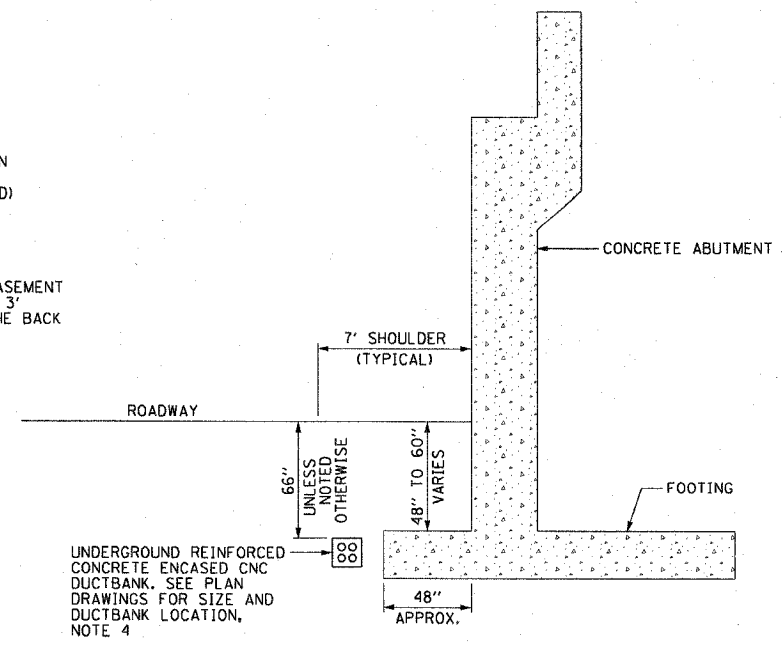


F.A.I. RTE.	SECTION	COUNTY	TOTAL SHEETS	SHEET NO.
90/94	*	COOK	588	340
STA.		TO STA.		
FED. ROAD DIST. NO. 1		ILLINOIS FED. AID PROJECT		
62303		* (2021-922 PT2 ETC 2324.6-1P) R-11		

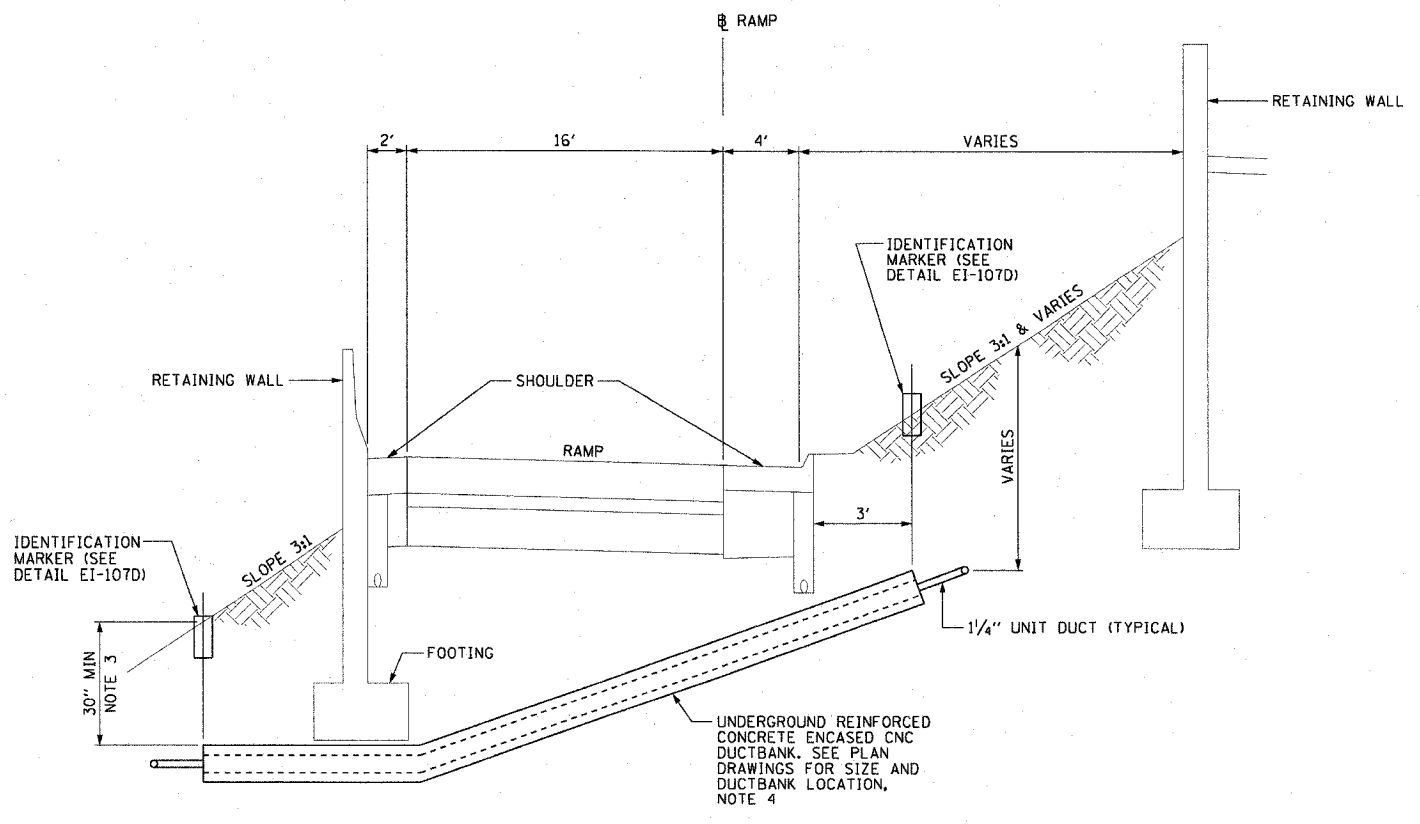


**EI-107A** DUCTBANK ROUTING AROUND VAULTED BRIDGE ABUTMENT  
SCALE: 1/4" = 1'-0"

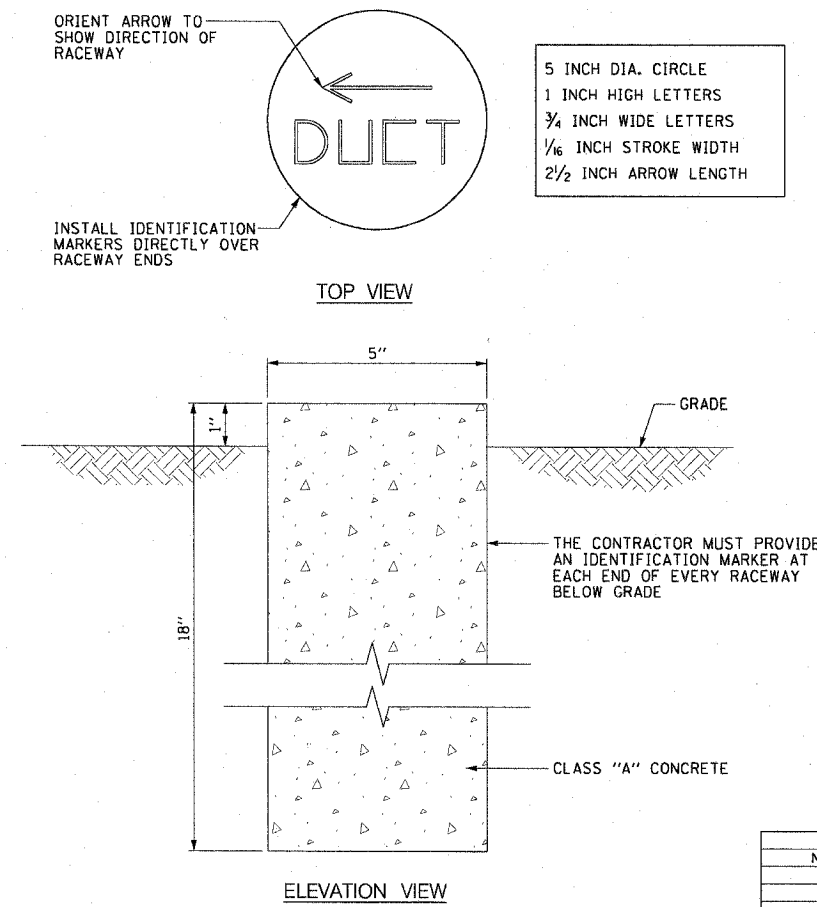


**EI-107B** DUCTBANK INSTALLATION DETAIL A-A  
SCALE: 1/4" = 1'-0"

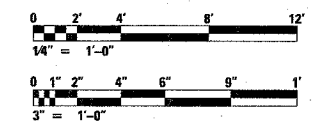
- NOTES:**
- SEE DRAWINGS EI-100 AND EI-101 FOR ELECTRICAL SYMBOLS AND ABBREVIATIONS.
  - SEE PLAN DRAWINGS FOR THE PROPOSED CONDUIT ROUTING.
  - DUCTBANK DEPTH MUST BE ADJUSTED SUCH THAT THE TOP OF CONCRETE ENCASEMENT IS INSTALLED UNDER THE RETAINING WALL FOOTING. FOR SOLDIER PILE TYPE RETAINING WALLS THE DUCTBANK IS ROUTED BETWEEN PILES. THE DUCTBANK DEPTH MUST BE 30 INCHES MINIMUM.
  - SEE DRAWING EI-106 FOR ELECTRICAL CONCRETE DUCTBANK DETAILS.
  - SEE PLAN DRAWINGS FOR ANY DEVIATIONS IN DUCTBANK DEPTH.



**EI-107C** TYPICAL CONCRETE ENCASED CNC UNDER RAMP INSTALLATION DETAIL  
NOT TO SCALE



**EI-107D** IDENTIFICATION MARKER DETAIL  
SCALE: 3" = 1'-0"



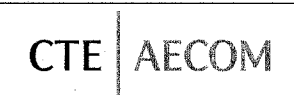
REVISIONS	
NAME	DATE

ILLINOIS DEPARTMENT OF TRANSPORTATION  
F.A.I. 90/94 (DAN RYAN EXPRESSWAY)  
GARFIELD BLVD TO 31ST STREET (SB LOCAL LANES)

**DUCTBANK INSTALLATION DETAILS  
UNDER RAMP AND AROUND  
ABUTMENTS**

SCALE: AS SHOWN  
DATE: June 9, 2006

DRAWN BY: HAR  
CHECKED BY: JPC



p:\94046\elect\8-cnts\18 & 19\contract 19\91\9101\20\20

09/25/2006 09:55:00 AM