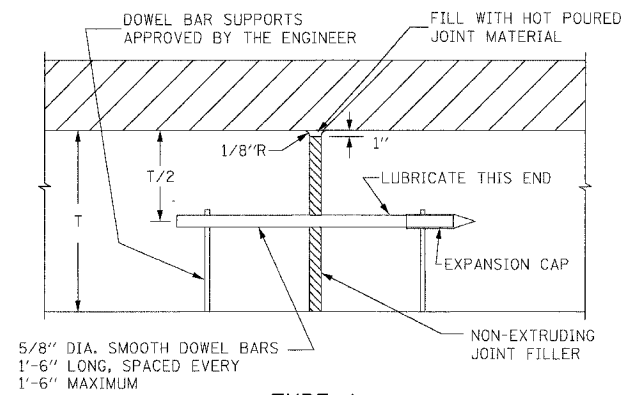
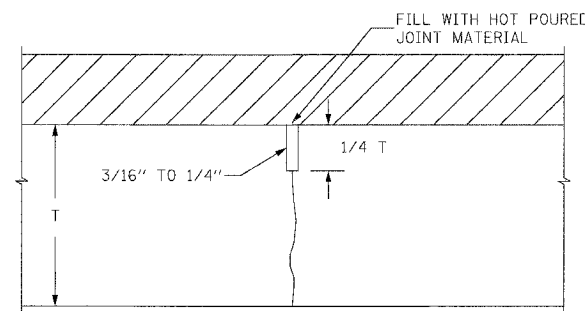


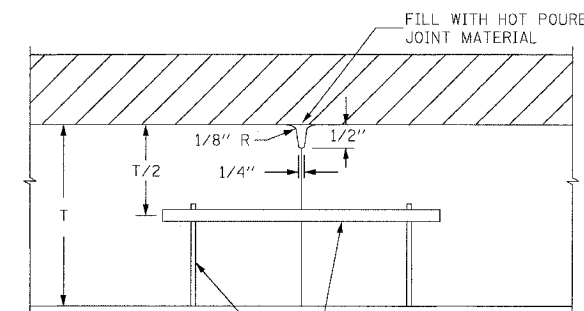
P.C.C. BASE COURSE JOINT DETAILS



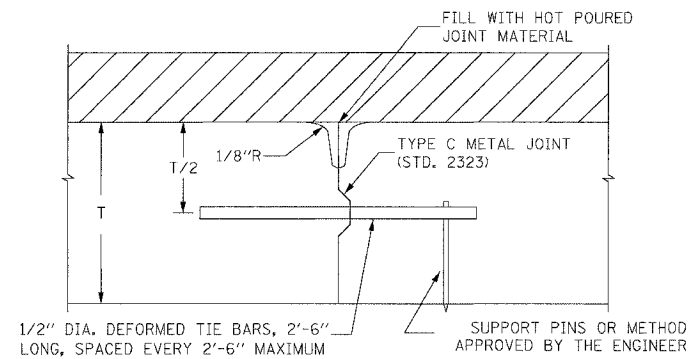
TYPE A
EXPANSION JOINT
(MAY BE CONSTRUCTION JOINT)



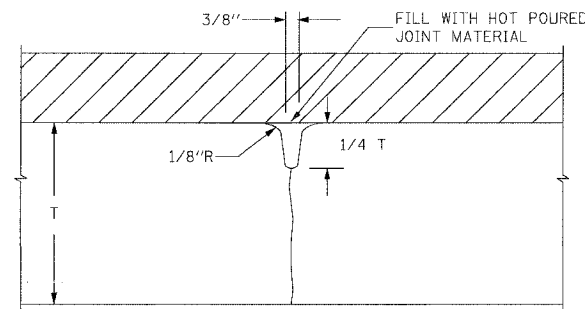
TYPE D
SAWED CONTRACTION JOINT
LONGITUDINAL OR TRANSVERSE



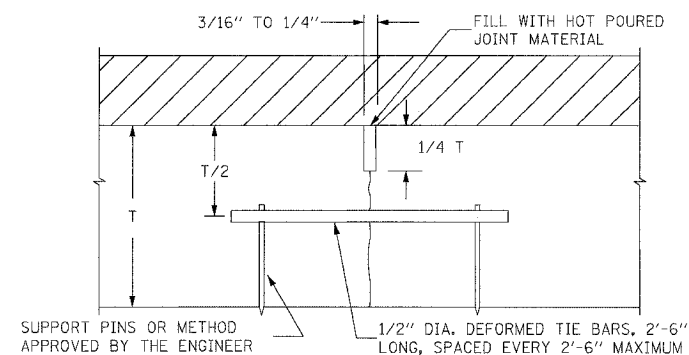
TYPE E
TRANSVERSE CONSTRUCTION JOINT



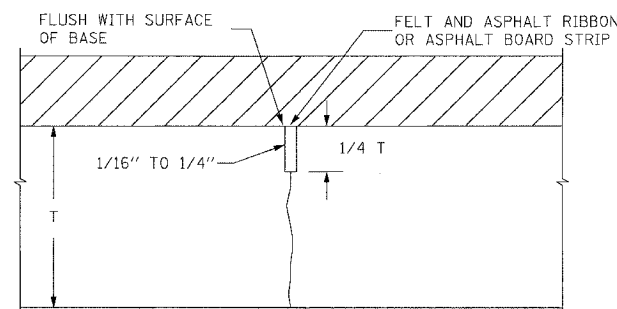
TYPE B
KEYED CONSTRUCTION JOINT
LONGITUDINAL OR TRANSVERSE



TYPE D
DUMMY GROOVE CONTRACTION JOINT
TRANSVERSE ONLY



TYPE C
SAWED LONGITUDINAL JOINT



TYPE D
PREMOLDED CONTRACTION JOINT
TRANSVERSE ONLY

NOTES:

1. DEFORMED TIE BARS SHALL CONFORM TO THE REQUIREMENTS OF AASHTO M-31 OR M-53 WITH AN ELONGATION NOT LESS THAN 20%.
2. HOT POURED JOINT MATERIAL SHALL CONFORM TO THE REQUIREMENTS OF AASHTO SPECIFICATION M-173-60 FOR CONCRETE JOINT SEALER.
3. ALL TIE BARS AND DOWEL BARS ARE TO BE EPOXY COATED.
4. SPLIT BOARD HEADERS WILL NOT BE ALLOWED.

BOWMAN, BARRETT & ASSOCIATES INC.
CONSULTING ENGINEERS
Chicago, Illinois
312.228.0100
www.bbandainc.com



REVISIONS	
NAME	DATE

ILLINOIS DEPARTMENT OF TRANSPORTATION
F.A.I. 94/90 (DAN RYAN EXPRESSWAY)
GARFIELD BLVD TO 31ST STREET (SB LOCAL LANES)
ROADWAY DETAILS
CITY STANDARD DETAILS
PAVEMENT JOINT DETAILS
SCALE: NONE
DATE: 06/09/06
DRAWN BY: CTE
CHECKED BY: JDC