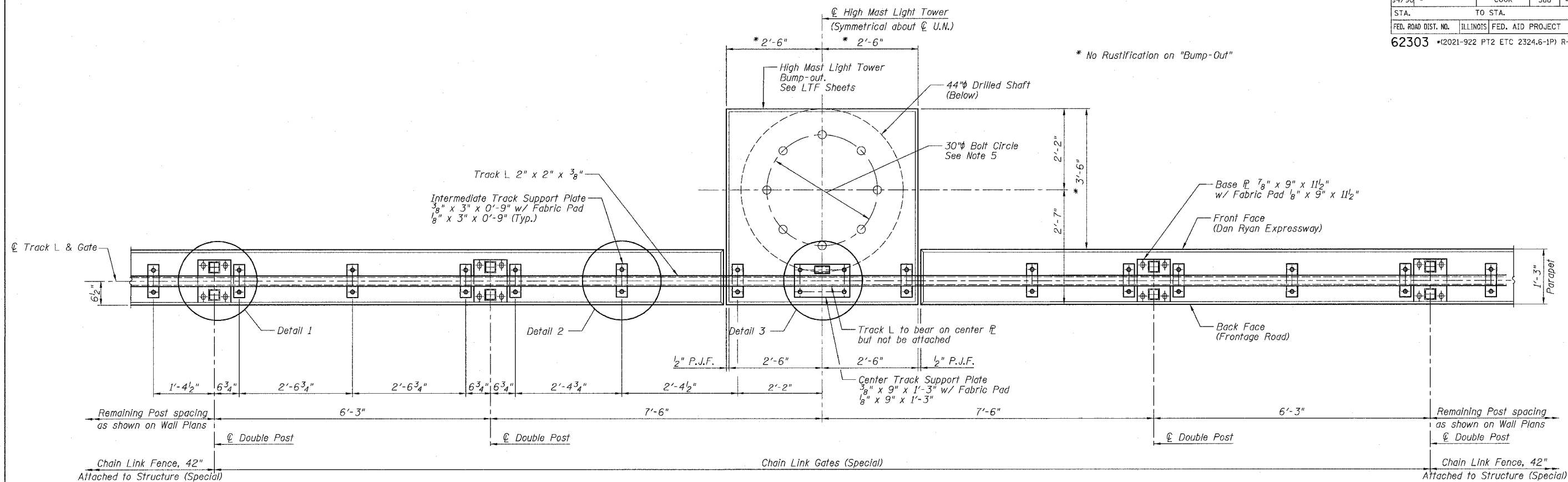
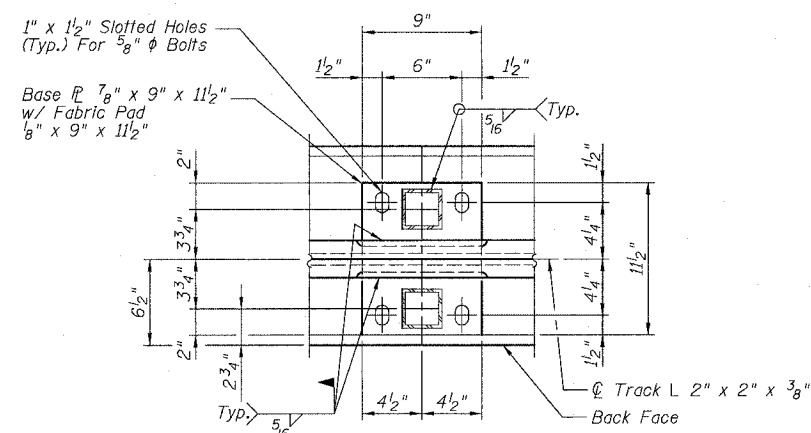


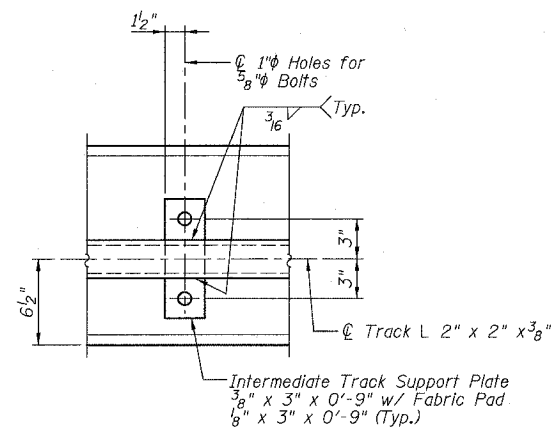
F.A.I.	SECTION	COUNTY	TOTAL SHEETS	SHEET NO.
94/90	*	COOK	588	454A
STA.	TO STA.			
FED. ROAD DIST. NO.	ILLINOIS	FED. AID PROJECT		
62303	*(2021-922 PT2 ETC 2324.6-1P) R-11			



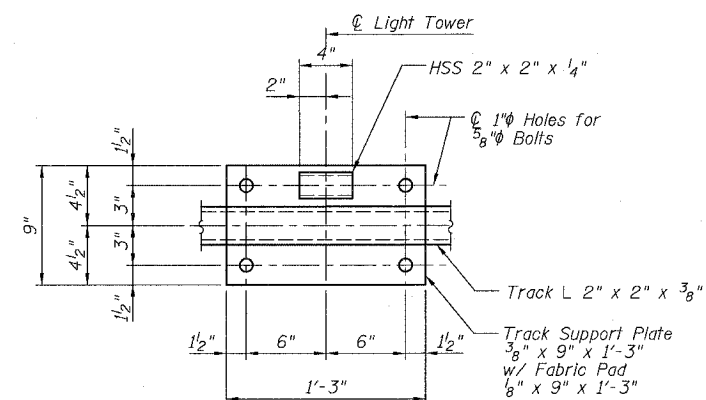
PLAN - GATE IN OPEN POSITION



DETAIL 1



DETAIL 2



DETAIL 3

NOTES:

1. All Bolts shall be Stainless Steel conforming to ASTM F593-98 and F594-98.
2. All Pipes and Bars shall be Hot-Dipped Galvanized after fabrication.
3. For Back Face Elevations, See Sheet SD3.
4. Attachment of Intermediate Track Support PL and Center Track Support PL shall follow alternate detail as described on Sheet SD3.
5. For HMLT Anchor Rod details see District 1 Std. BE501.

SHEET SD2A OF SD9

REVISIONS	
NAME	DATE
REVISOR	06/19/06

ILLINOIS DEPARTMENT OF TRANSPORTATION
 F.A.I. 94/90 (DAN RYAN EXPRESSWAY)
 GARFIELD BLVD TO 31ST STREET (SB LOCAL LANES)
 CHAIN LINK FENCE, 42" ATTACHED TO
 STRUCTURE (SPECIAL) AND GATE
 TYPICAL GATE PLAN AND NOTES

SCALE: NTS
 DATE: JUNE 9, 2006
 DRAWN BY: LAM
 CHECKED BY: BLU

BOWMAN, BARRETT & ASSOCIATES INC.
 CONSULTING ENGINEERS
 Chicago, Illinois
 312.228.0100
 www.bbainc.com

11/23/2006 11:02:47 AM