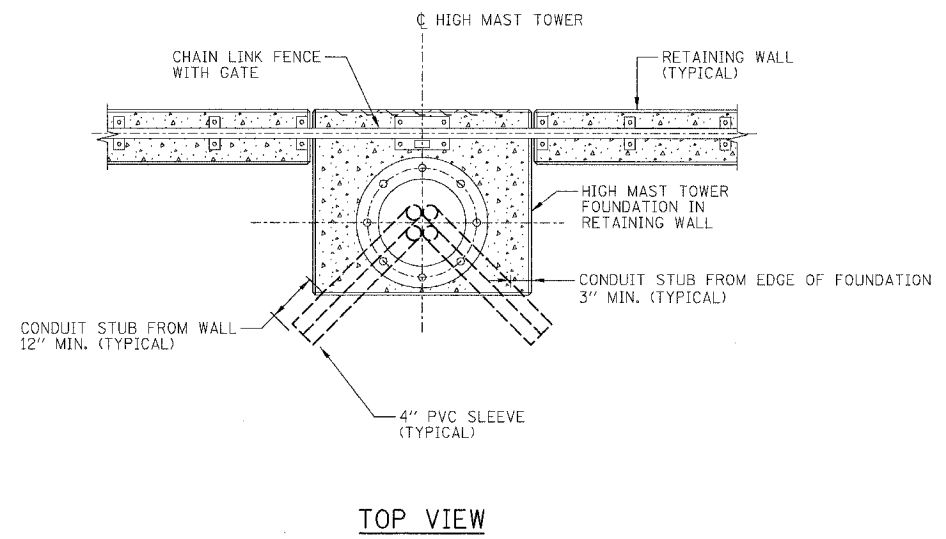
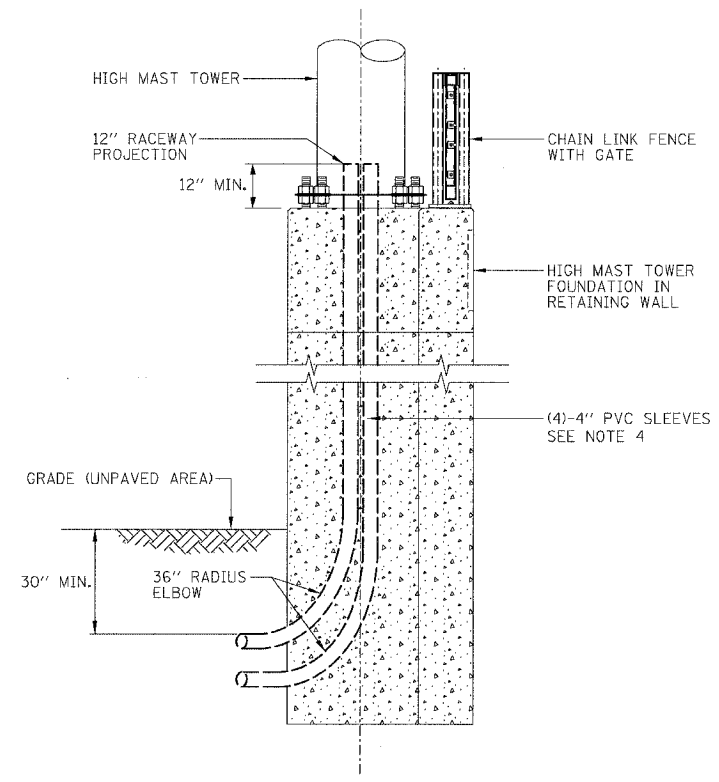


F.A.I.	SECTION	COUNTY	TOTAL SHEETS	SHEET NO.
94/90		COOK	588	460
STA.		TO STA.		
FED. ROAD DIST. NO.		ILLINOIS FED. AID PROJECT		
62303 *12021-922 PT2 ETC 2324.6-1P) R-11				

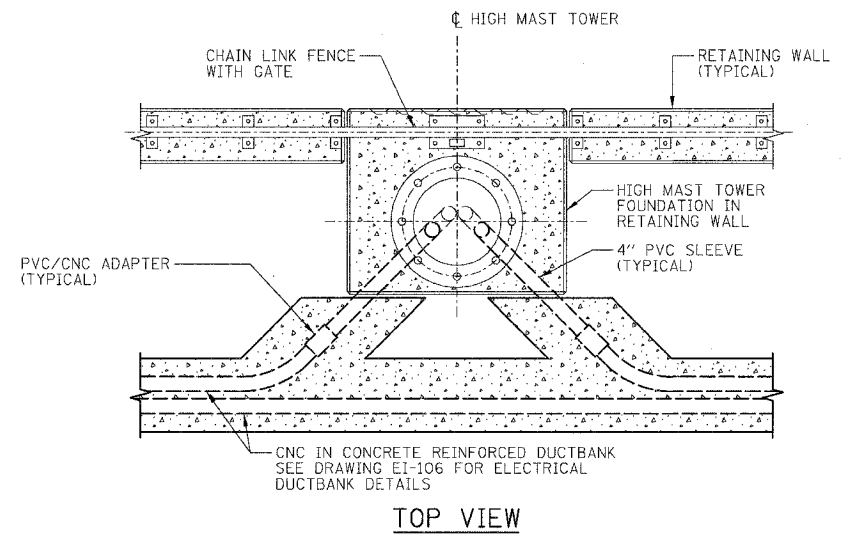


TOP VIEW

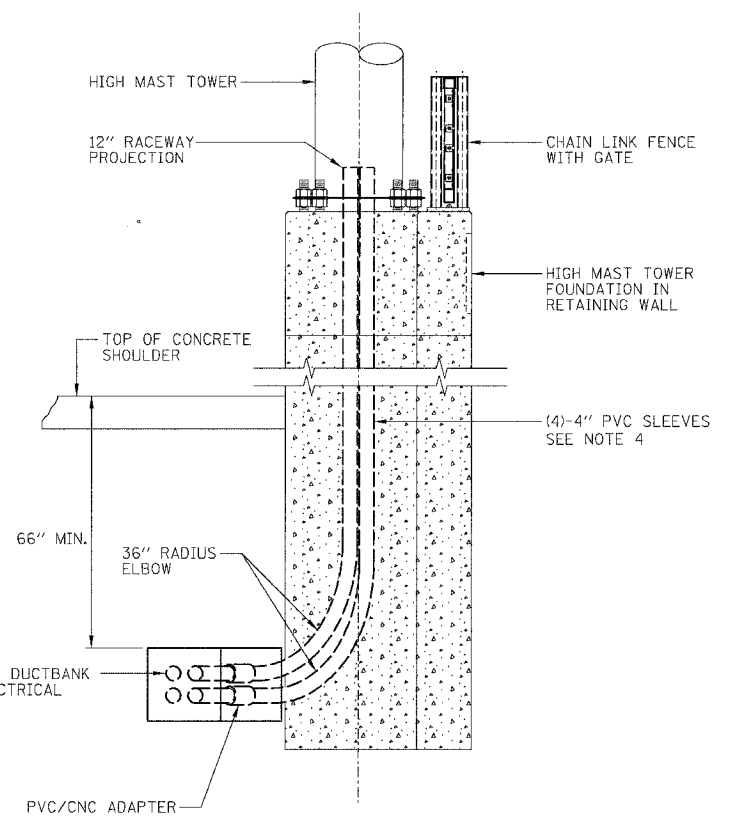


SIDE ELEVATION VIEW

TYPICAL CONDUIT INSTALLATION DETAIL FOR INSTALLING CONDUIT SLEEVES IN FOUNDATION IN RETAINING WALL
NOT TO SCALE



TOP VIEW



SIDE ELEVATION VIEW

TYPICAL CONDUIT INSTALLATION DETAIL FOR INSTALLING CONCRETE DUCTBANK TO FOUNDATION IN RETAINING WALL
NOT TO SCALE

NOTES:

1. SEE DRAWINGS EI-100 AND EI-101 FOR ELECTRICAL SYMBOLS AND ABBREVIATIONS.
2. SEE PLAN DRAWINGS FOR HIGH MAST LIGHT TOWER FOUNDATION LOCATIONS.
3. SEE DRAWING EI-106 FOR ELECTRICAL DUCTBANK DETAILS.
4. SEE SHEET SD9 FOR NOTES REGARDING PVC CONDUIT SLEEVES.
5. SEE WALL PLANS AND IDOT STANDARD DRAWING BE-501 FOR ADDITIONAL FOUNDATION DETAILS.

SHEET SD8 OF SD9

REVISIONS NAME	DATE

ILLINOIS DEPARTMENT OF TRANSPORTATION
F.A.I. 94/90 (DAN RYAN EXPRESSWAY)
GARFIELD BLVD TO 31ST STREET (SB LOCAL LANES)

LIGHT TOWER FOUNDATIONS MOUNTED ON RETAINING WALLS

SCALE: NTS
DATE: JUNE 9, 2006
DRAWN BY: MTR
CHECKED BY: BLU

BOWMAN, BARRETT & ASSOCIATES INC.
CONSULTING ENGINEERS
Chicago, Illinois
312 228 0100
www.bbainc.com

10/29/06 AM