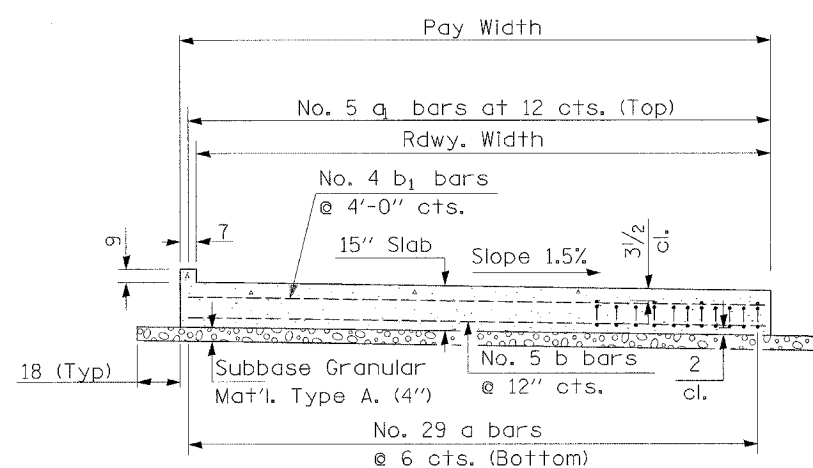


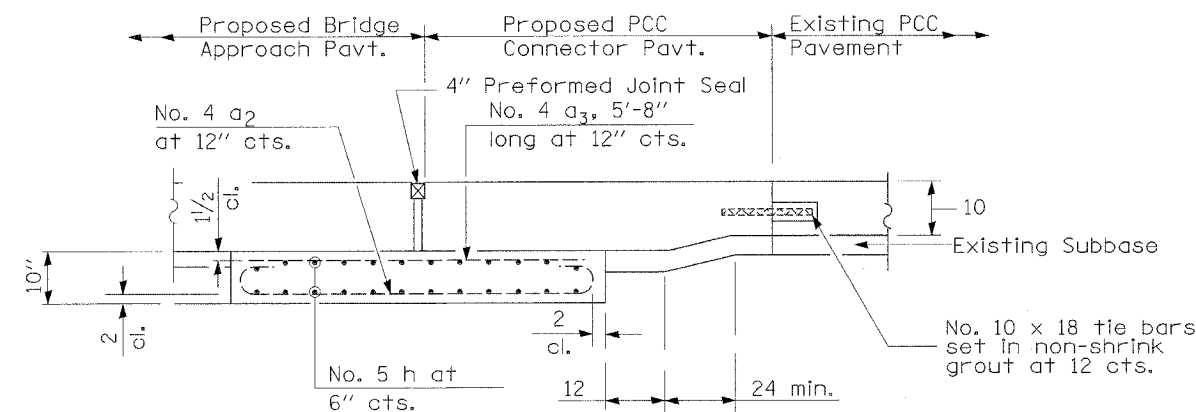
F.A.P. RTE.	SECTION	COUNTY	TOTAL SHEETS	SHEET NO.
326	E-8-4-B	KANE	62	18
FED. ROAD DIST. NO. 1		ILLINOIS	FED. AID PROJECT	

CONTRACT NO. 62531
 ISTHA CONTRACT RR-02-5129
 ISTHA BRIDGE NO. 1101



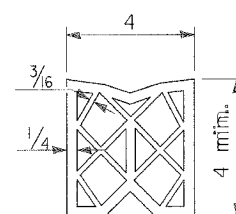
SECTION D-D

(See Plan for Dimensions not shown)
 All reinforcement bars shall be epoxy coated.

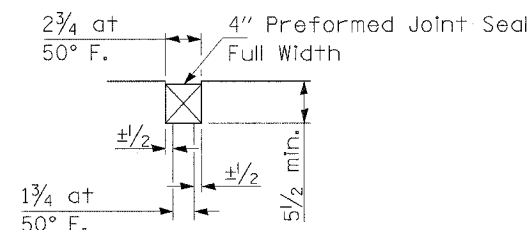


SECTION G-G - RIGID PAVEMENT

(Showing reinforcement)

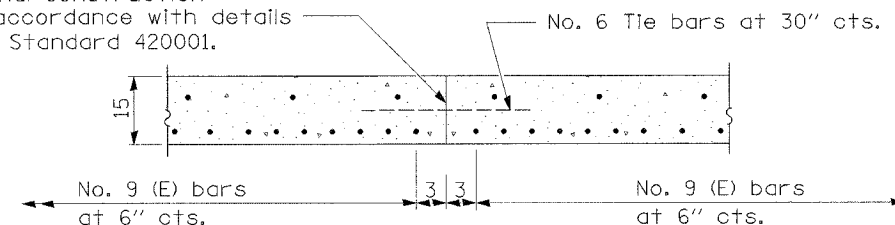


PREFORMED JOINT SEAL



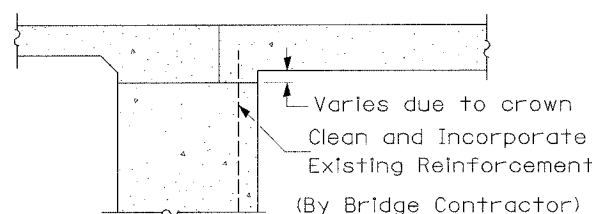
DETAIL A

Longitudinal Construction Joint in accordance with details shown on Standard 420001.

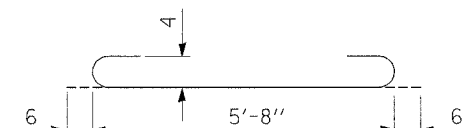


OPTIONAL LONGITUDINAL CONSTRUCTION JOINT

As approved by the Engineer, the Contractor may elect to reduce the widths of pour by use of the Optional Longitudinal Construction Joint shown. Joints shall be located at the edge of a traffic lane.



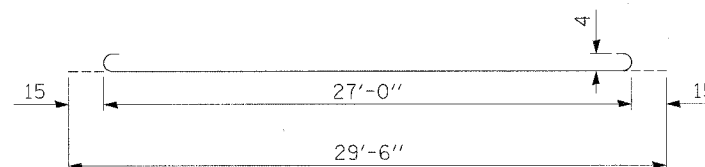
SECTION E-E
 (Vaulted Abutments)



BAR a₂

DESIGN STRESSES

$f_y = 60,000$ p.s.i.
 $f'_c = 3,500$ p.s.i.
 $n = 8.5$



BAR a

GENERAL NOTES

All dimensions are shown in inches unless otherwise stated.

rjngroup

Excellence through Ownership

200 West Front Street
 Wheaton, IL 60187

REVISIONS	
NAME	DATE

ILLINOIS DEPARTMENT OF TRANSPORTATION
 F.A.P. ROUTE 326 (IL 47)

BRIDGE APPROACH PAVEMENT DETAILS

SCALE: VERT.
 HORIZ.
 DATE: MARCH 21, 2006

DRAWN BY: NEC
 CHECKED BY: SPF