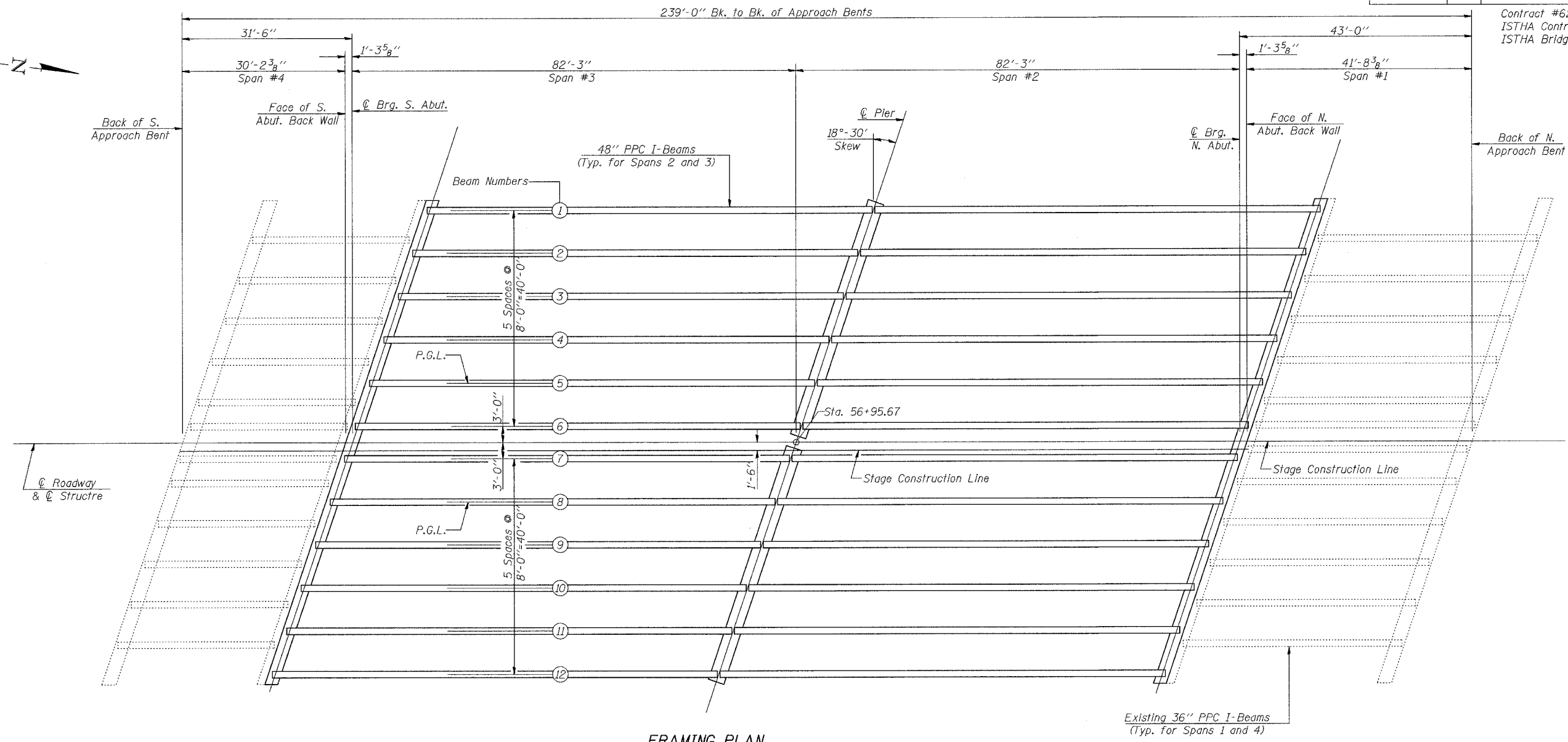


Contract #62531  
 ISTHA Contract #RR-02-5129  
 ISTHA Bridge No. 1101



FRAMING PLAN

	0.4 Sp. #1	0.6 Sp. #2	Pier
Strand Pattern 26-A			
I	(in <sup>4</sup> ) 144,117	-	-
I'	(in <sup>4</sup> ) 399,811	-	-
S <sub>b</sub>	(in <sup>3</sup> ) 6834	-	-
S <sub>b</sub> '	(in <sup>3</sup> ) 11,324	-	-
S <sub>t</sub>	(in <sup>3</sup> ) 5355	-	-
S <sub>t</sub> '	(in <sup>3</sup> ) 32,217	-	-
I <sub>c</sub>	(k/')	1,364	-
M <sub>c</sub>	(k)	1153	-
s <sub>c</sub>	(k/')	.391	.391
M <sub>s</sub>	(k)	186	331
M <sub>t</sub>	(k)	706	601
M (Imp)	(k)	170	144

	Abut.	Pier Span 1	Pier Span 2
R <sub>D</sub>	(k) 56.1	56.1	
R <sub>sD</sub>	(k) 12.1	20.1	
R <sub>t</sub>	(k) 45.0	33.3	
Imp.	(k) 10.8	8.0	
R (Total)	(k) 124.0	117.5	

I and I' are the moment of inertia and composite moment of inertia of the beam section.  
 S<sub>b</sub> and S<sub>b</sub>' are the non-composite and composite section modulus for the bottom fiber of the prestressed beam.  
 S<sub>t</sub> and S<sub>t</sub>' are the non-composite and composite section modulus for the top fiber of the prestressed beam.

<p>Excellence through Ownership</p> <p>200 West Front Street Wheaton, IL 60187</p>	ILLINOIS DEPARTMENT OF TRANSPORTATION
	FRAMING PLAN
	IL RTE. 47 OVER I-88 (E-W TOLLWAY) KANE COUNTY STRUCTURE NO. 045-0082
	DATE: 2-01-2006
	DRAWN BY WJV CHECKED BY BLB