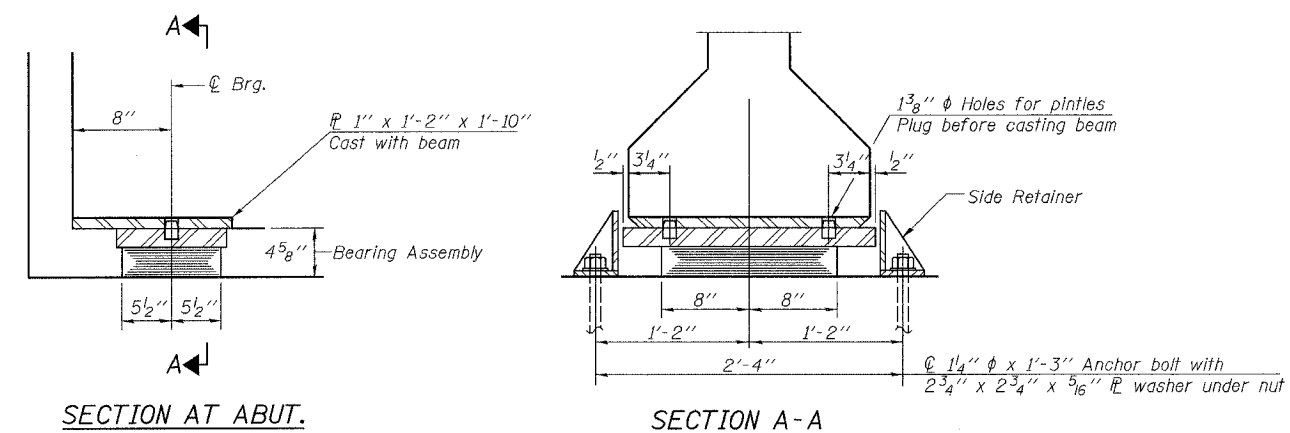
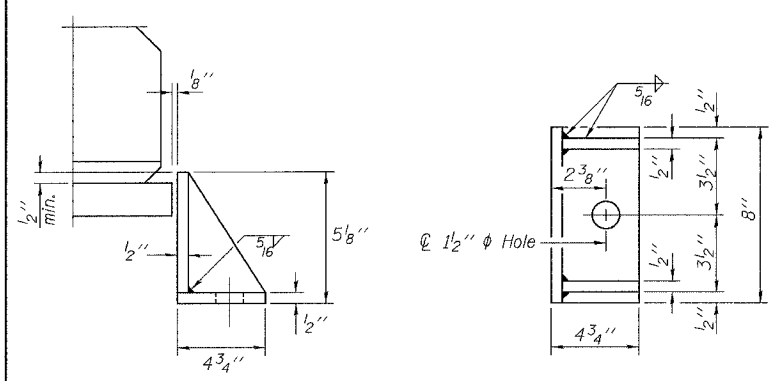
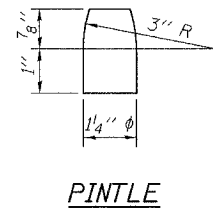
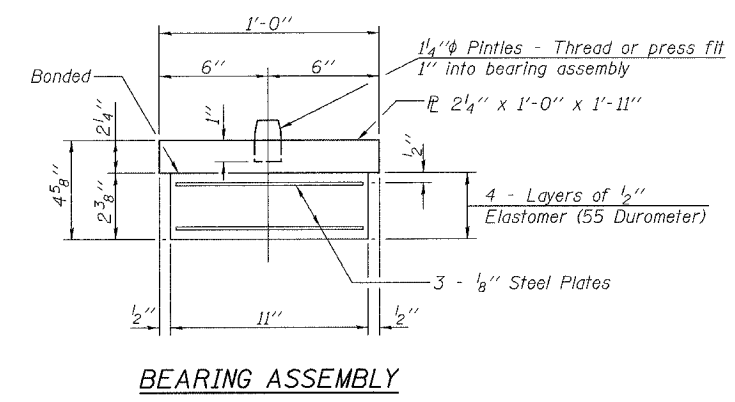


Contract #62531  
 ISTHA Contract #RR-02-5129  
 ISTHA Bridge No. 1101



**TYPE I ELASTOMERIC EXP. BRG.**

Notes:  
 Holes at expansion bearings shall be drilled and anchor bolts grouted in place after beams have been erected.  
 See sheet 24 of 32 for anchor bolt installation.  
 See sheet 22 of 32 for additional details of plate cast with beam.  
 Cost of anchor bolts included with Elastomeric Bearing Assembly, Type I.



**SIDE RETAINER**  
 Cost included with Elastomeric Bearing Assembly, Type I.  
 Equivalent rolled angle with stiffeners will be allowed in lieu of welded plates.

**BILL OF MATERIAL**

Item	Unit	Total
Elastomeric Bearing Assembly, Type I	Each	24

<p>Excellence through Ownership</p> <p>200 West Front Street Wheaton, IL 60187</p>	ILLINOIS DEPARTMENT OF TRANSPORTATION BEARING DETAILS IL RTE. 47 OVER I-88 (E-W TOLLWAY) KANE COUNTY STRUCTURE NO. 045-0082
	DRAWN BY NSR CHECKED BY WJV DATE: 2-01-2006