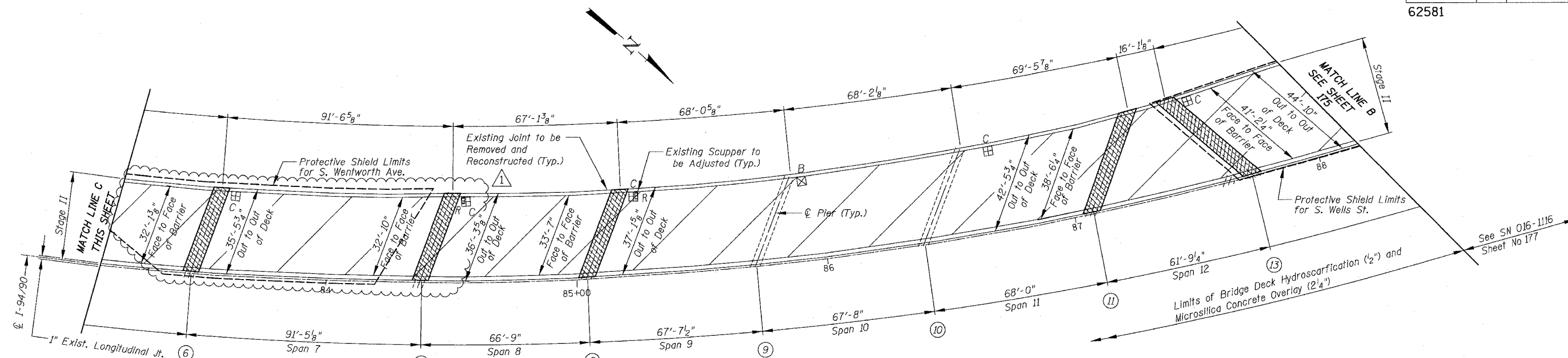
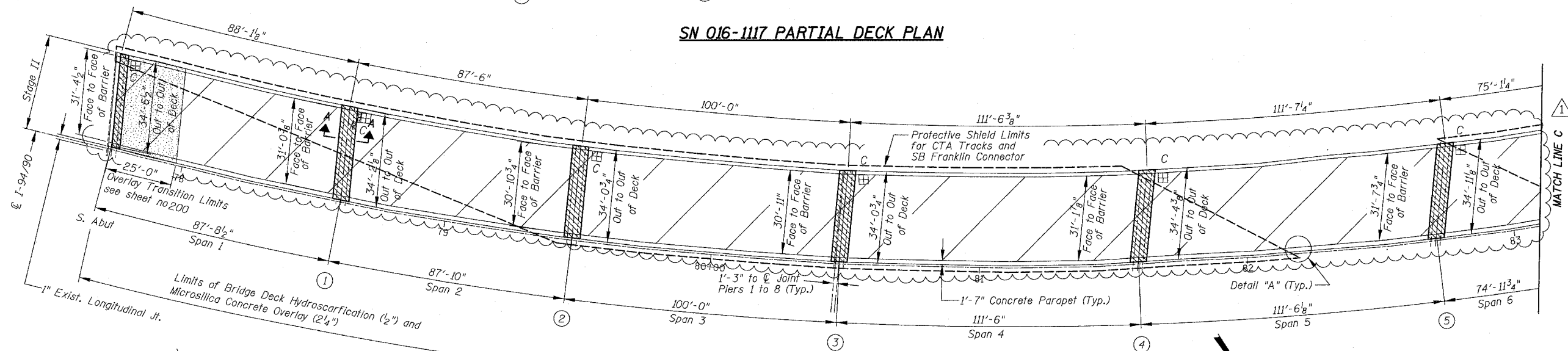


F.A.I.	SECTION	COUNTY	TOTAL SHEETS	SHEET NO.
94/90	2003-0291	COOK	344	174
STA.		TO STA.		
FED. ROAD DIST. NO.	ILLINOIS	FED. AID PROJECT		

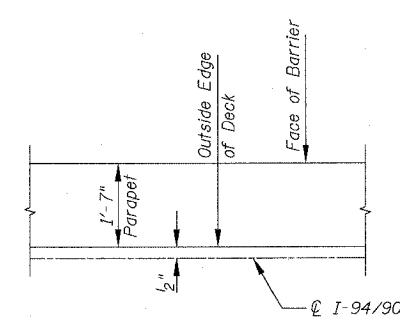
62581



SN 016-1117 PARTIAL DECK PLAN



SN 016-1117 PARTIAL DECK PLAN



DETAIL "A" (TYP)

Notes:

The limits of the deck slab repair partial depth are shown for information only as per special provision. The additional volume of Overlay required to fill all depressions below the specified thickness will be paid for at the contractor's actual material cost for Microsilica Concrete per square yard plus 15 percent.

An estimated quantity of 200 sy is shown in the table of "Total Bill of Material" for "Deck Slab Repair (Full Depth Type 1)". The exact quantity will be measured in the field as directed by the Engineer after Hydroscarification has been completed.

The limits of Hydroscarification and Microsilica Concrete Overlay does not include the concrete removal area (shown as hatched on the plans), nor 4" on each side of the Finger Plate joint locations.

Parapet repairs are shown at approximate locations with approximate LxH dimensions. The Contractor and Engineer, shall visually inspect and determine the exact location(s) and extent of the parapet damages to be repaired. The cost for the repairs shall be included in the cost of "Concrete Removal" and "Concrete Superstructure".

All dimensions are given along  $\phi$  of Pier unless noted otherwise.

Limits of Protective Shield shown graphically for clarity. Shielding shall be provided from  $\phi$  pier to  $\phi$  pier over spans shown out to out of deck, unless noted otherwise. Full shielding shall be provided over streets, railroads and waterways for Hydroscarification operations. Protective Shield shall be provided for any full depth slab repairs.

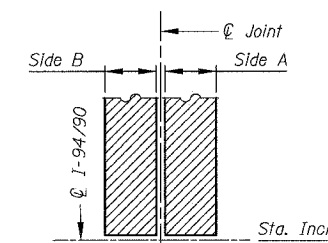
The Contractor shall exercise care during the removal of the concrete parapet for the joint reconstruction not to damage any parapet mounted junction boxes that may interfere with the removal. The Contractor shall repair any damages at no additional cost to the Department.

Scuppers and deck repair areas are shown out of proportion. Repair areas shown within scupper limits shall be interpreted to be in the vicinity of the scupper.

For stages of work, plan, cross sections and TCB, see MOT plans. Alignment shown was derived from as built plans for contractors reference and should not be used for dimensional purposes.

For existing and proposed joint details see sheets 192 & 193. For existing joint sections see Sheet 194. For proposed joint sections see Sheet 195.

For existing and proposed joint plans See sheets 196 to 198. For Scupper adjustment details see Sheet 279 & 280. For Hydroscarification and Microsilica Concrete Overlay details see Sheet 200. For Finger Plate Joint details see sheets 212 to 216. For Pier and Abutment Skew Angles see Sheets 192 & 193. For Silicone Joint Sealer details see Sheet 201. For Closure Wall details See Sheet 202. For Parapet Concrete repair, see Detail "B" Sheet 202. For Legend See Sheet 159.



SECTION A-A (TYP.)

REVISIONS	
NAME	DATE
ADDENDUM NO. 1	6/29/06

ILLINOIS DEPARTMENT OF TRANSPORTATION  
 F.A.I. 94/90 (DAN RYAN EXPRESSWAY)  
 SB DAN RYAN ELEVATED BRIDGE  
 REPAIR FROM 15TH TO 28TH STREETS  
 PARTIAL DECK PLAN  
 SN 016-1117

SCALE: 1"=20'  
 DATE: 5/25/2006

DRAWN BY: BDC  
 CHECKED BY: BLU

BOWMAN, BARRETT & ASSOCIATES INC.  
 CONSULTING ENGINEERS  
 Chicago, Illinois  
 312.228.0100  
 www.bbainc.com

5/29/2006 5:25:07 PM