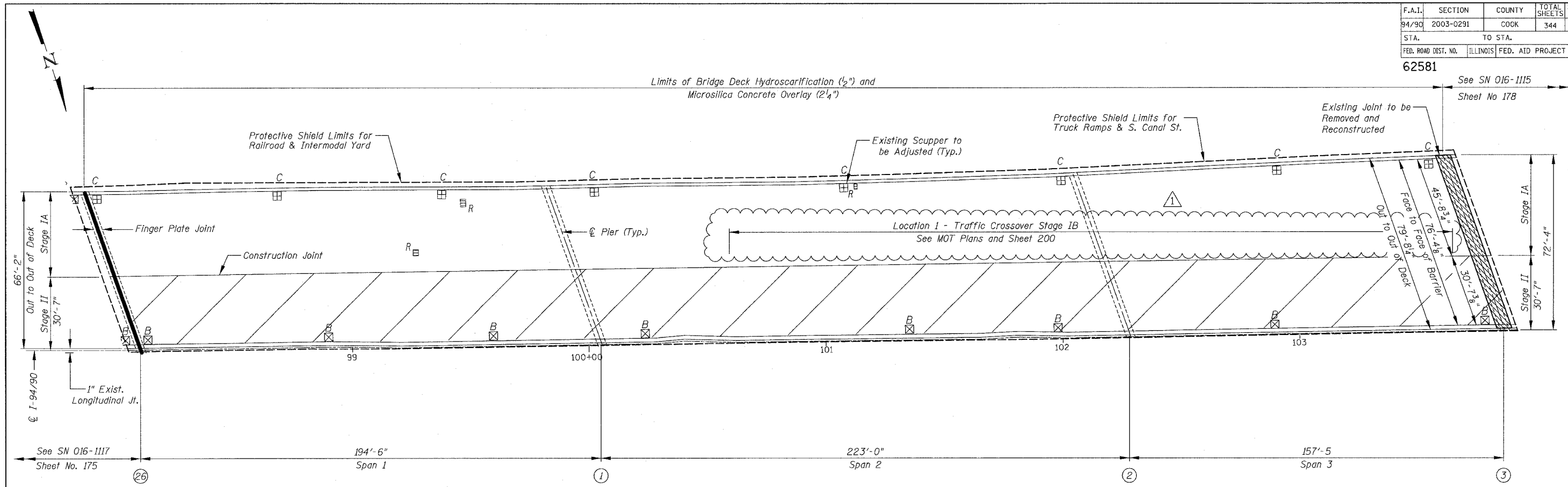
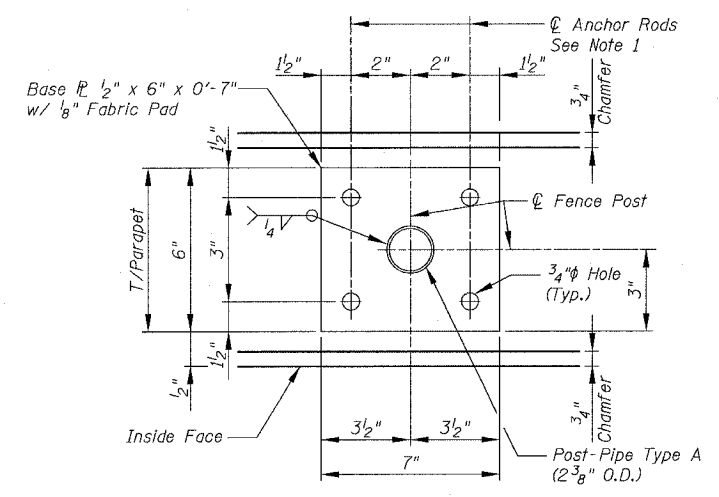


F.A.I.	SECTION	COUNTY	TOTAL SHEETS	SHEET NO.
94/90	2003-0291	COOK	344	177
STA.	TO STA.			
FED. ROAD DIST. NO.	ILLINOIS FED. AID PROJECT			

62581
See SN 016-1115
Sheet No 178



SN 016-1116 PARTIAL DECK PLAN



BASE PLATE PLAN

- Notes:
1. Drill and Grout $\frac{3}{8}$ " diameter Anchor Rods with Hex Nuts and $\frac{1}{4}$ " diameter washers. Embedment shall be according to Manufacturer's specifications using HVA Adhesive Anchor as manufactured by Hilti, Inc. or approved equal. Weld Nuts to Anchor Bolt after installation. Cost included with "Chain Link Fence 4' (Bridge)
 2. For additional Chain Link Fence Details see Std. 664001.
 3. See Sheets 175 & 176 for location of Chain Link Fence on Parapet.

BOWMAN, BARRETT & ASSOCIATES INC
CONSULTING ENGINEERS
Chicago, Illinois
312.228.0100
www.bbainc.com

For Notes see Sheet 174, for Legend see Sheet 159

REVISIONS	
NAME	DATE
ADDENDUM NO. 1	6/29/06

ILLINOIS DEPARTMENT OF TRANSPORTATION
F.A.I. 94/90 (DAN RYAN EXPRESSWAY)
SB DAN RYAN ELEVATED BRIDGE
REPAIR FROM 15TH TO 28TH STREETS
PARTIAL DECK PLAN
SN 016-1116

SCALE: 1"=20'
DATE: 5/25/2006

DRAWN BY: BDC
CHECKED BY: BLU

6/29/2006 5:28:35 PM