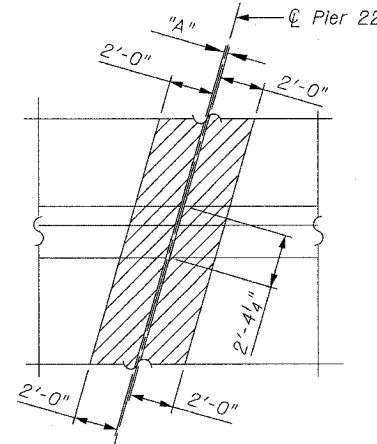
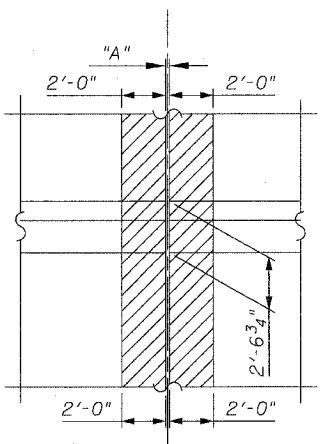


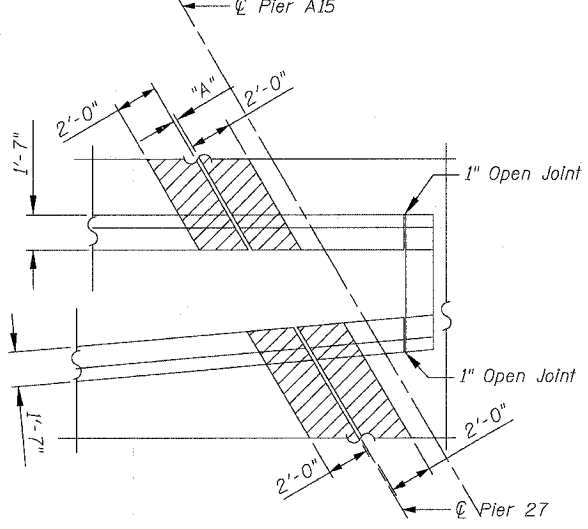
CLOSURE WALL DETAIL
SN 016-1115 PIER 21
(NTS)



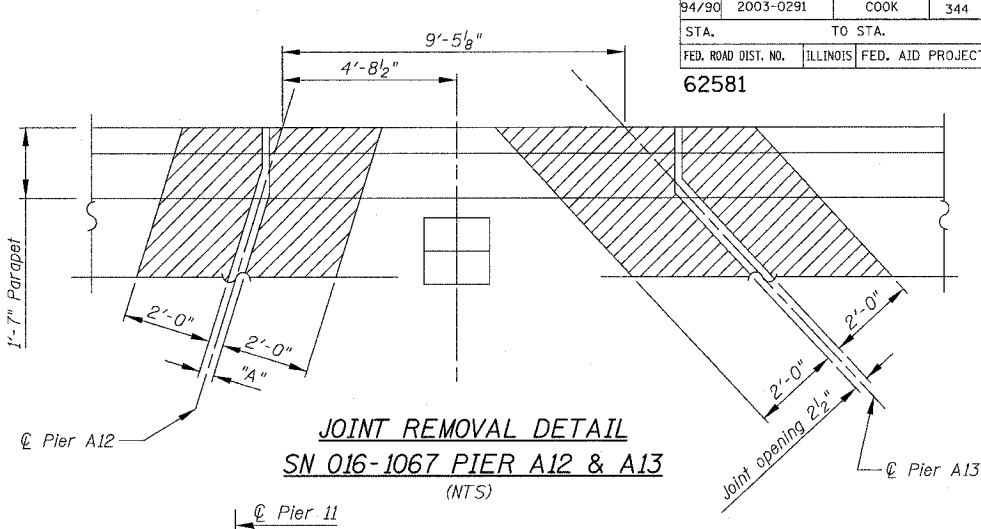
MEDIAN DETAIL
SN 016-1115 PIER 22
(NTS)



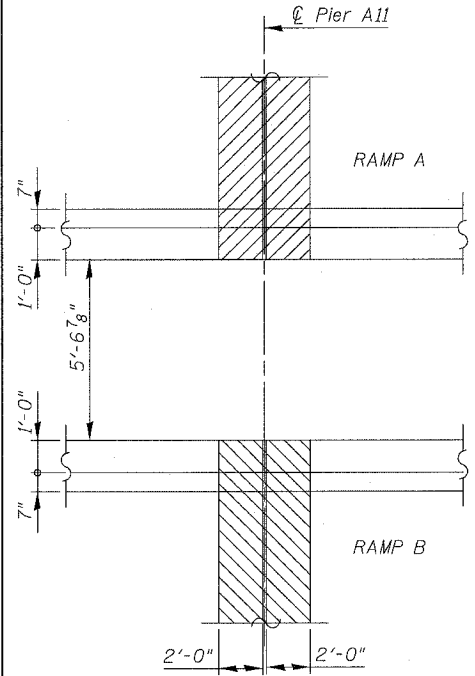
MEDIAN DETAIL
SN 016-1113 PIER 3
(NTS)



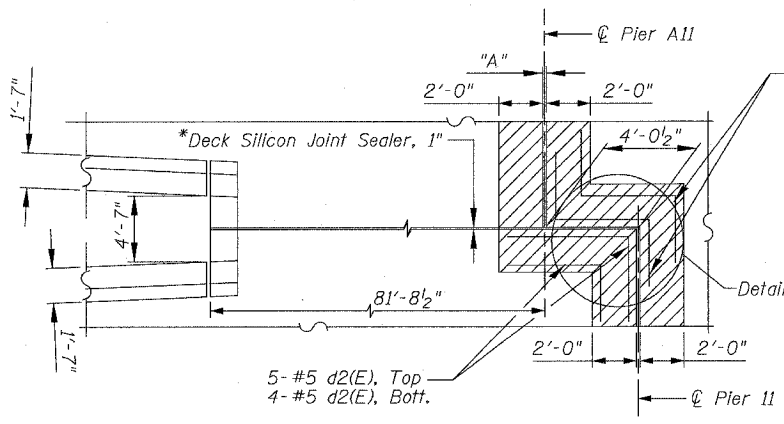
CLOSURE WALL DETAIL
SN 016-1112 PIER 27
(NTS)



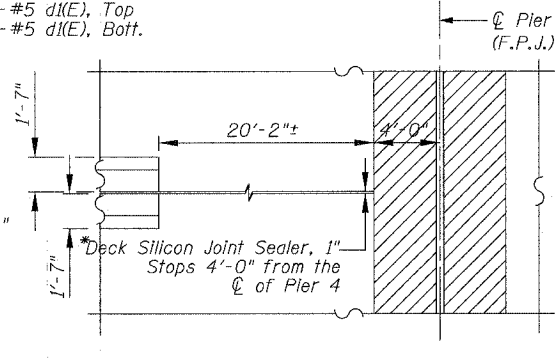
JOINT REMOVAL DETAIL
SN 016-1067 PIER A12 & A13
(NTS)



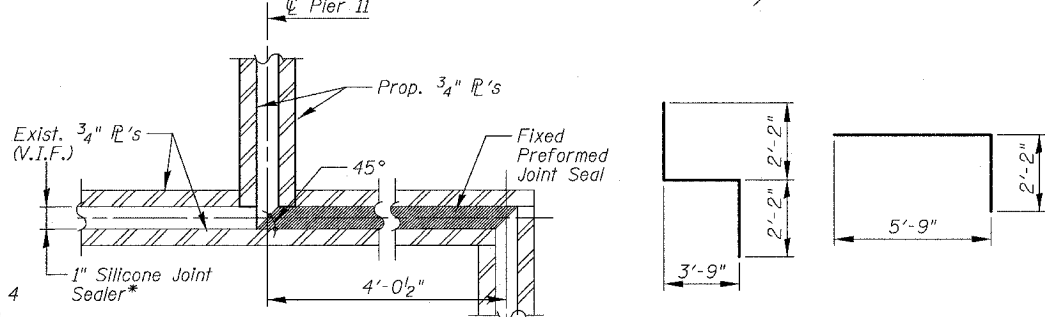
MEDIAN DETAIL
SN 016-1113 (RAMP A)
PIER A10
(NTS)



JOINT DETAIL
SN 016-1113 PIERS 11 & A11
(NTS)



JOINT REMOVAL DETAIL
SN 016-1110 PIER 4
(NTS)



DETAIL "A"

PARAPET REPAIRS - DETAIL "B"
(Front face of Parapet)

BAR d1(E) BAR d2(E)

- Notes for Parapet Concrete Repair:
- H_R and L_R indicate dimensions for concrete removal. Perimeters of concrete removal areas (both front and back) shall be saw cut $3/4$ " prior to removal of concrete.
 - Concrete removal shall extend a minimum of 6" past damage or to joint if within 2'-0".
 - The cost of saw cuts shall be included in the cost of "Concrete Removal."
 - Existing bars to be cleaned, straightened, and incorporated in new construction as directed by Engineer, see Note 6.
 - Removal of any temporary guardrail attached to parapet will be included in Concrete Removal.
 - Contractor shall provide new reinforcement bars as shown on Typical Cross Section on Sheet 201 to replace damaged bars as directed by Engineer. Utilize bars $d_1(E)$ and $d_3(E)$ as shown on sheet 211 for verticals. Quantity shown in table is based on full replacement over removal area.
 - Existing bars to be replaced shall be cut-off and an approved mechanical splice used to connect to new bars. New vertical bars shall be either drilled and grouted in 9" deep holes in accordance with Art. 584 of the Standard Specifications or a mechanical splice provided to existing verticals, modify bars $d_1(E)$ and $d_3(E)$ as required for either approach.
 - Cut bars in field to fit as required.

- Notes:
- At the 4'-0 1/2" section cut the Preformed Joint Seal at 45° and vulcanize in the field.
 - The cost for the 4'-0 1/2" section shall be incidental with the total cost of the fixed joints.
 - The joints manufacturer should be consulted to ensure that a proper bond will be provided between the Silicone Joint and Fixed Joint.

PARAPET REPAIR DIMENSIONS AND BILL OF MATERIALS

S/N & Location	016-1117		016-1067		016-1062		016-1113		016-1110		016-0137
	Location 1	Location 2	Location 2A	Location 3	Location 4	Location 5	Location 6	Location 7	Location 8	Location 9	
Lr	4'-0"	3'-0"	12'-0"	5'-0"	4'-0"	6'-0"	5'-0"	12'-0"	3'-0"	7'-0"	
Hr	2'-0"	2'-0"	3'-6"	3'-6"	2'-0"	2'-0"	2'-0"	3'-6"	2'-0"	3'-6"	
Concrete Removal (Cu. Yd.)	0.1	0.1	1.0	0.5	0.1	0.2	0.2	1.0	0.1	0.6	
Concrete Superstructure (Cu.Yd.)	0.2	0.2	1.3	0.6	0.2	0.3	0.3	1.3	0.2	0.8	
Reinforcement Bars Epoxy Coated (Pound) (See Note 6)	20	20	250	110	20	30	30	250	20	160	
Mechanical Splice (Each) (See Note 7)	16	16	44	30	16	16	16	44	16	34	

PIERS 11 & A11 (SN 016-1113) BILL OF MATERIAL

BAR	NO.	SIZE	LENGTH	SHAPE
d1(E)	9	#5	8'-1"	L
d2(E)	9	#5	7'-11"	L
Item			Unit	Qty.
Reinforcement Bars, Epoxy Coated			Pound	150

BOWMAN, BARRETT & ASSOCIATES INC.
CONSULTING ENGINEERS
Chicago, Illinois
312.228.0100
www.bbainc.com

REVISIONS	NAME	DATE
1	ADDENDUM NO. 1	6/29/06

ILLINOIS DEPARTMENT OF TRANSPORTATION
F.A.I. 94/90 (DAN RYAN EXPRESSWAY)
SB DAN RYAN ELEVATED BRIDGE
REPAIR FROM 15TH TO 28TH STREETS
PARAPET REPAIR AND
JOINT REMOVAL DETAILS
SCALE: NTS
DATE: 5/25/2006
DRAWN BY: BDC
CHECKED BY: BLU

1/1660/0400 BRIDGE 20 SHEETS 6602.2.DWG 4/25/06