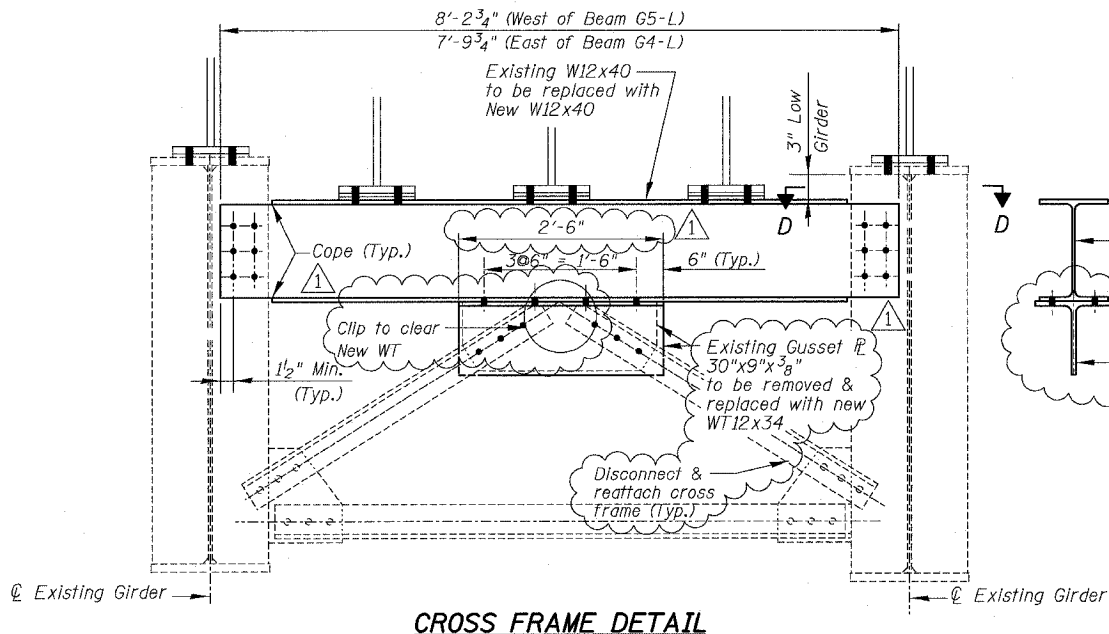
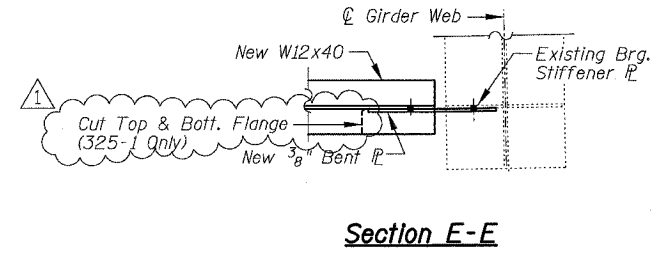
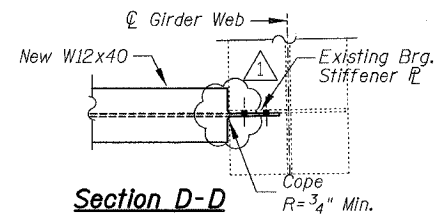
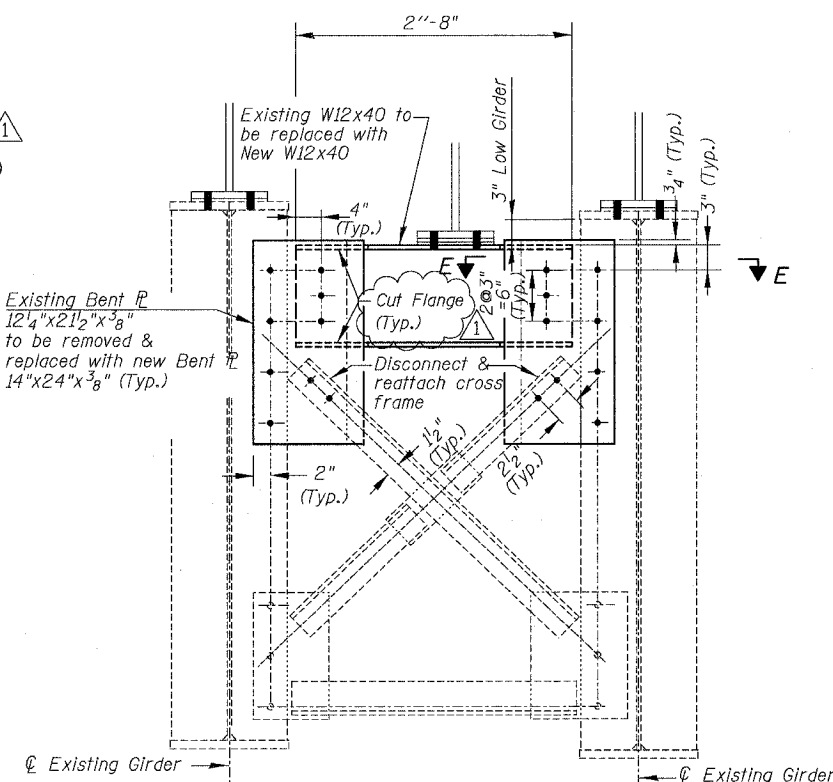


F.A.I.	SECTION	COUNTY	TOTAL SHEETS	SHEET NO.
94/90	2003-029I	COOK	344	266
STA.		TO STA.		
FED. ROAD DIST. NO.	ILLINOIS	FED. AID PROJECT		

62581

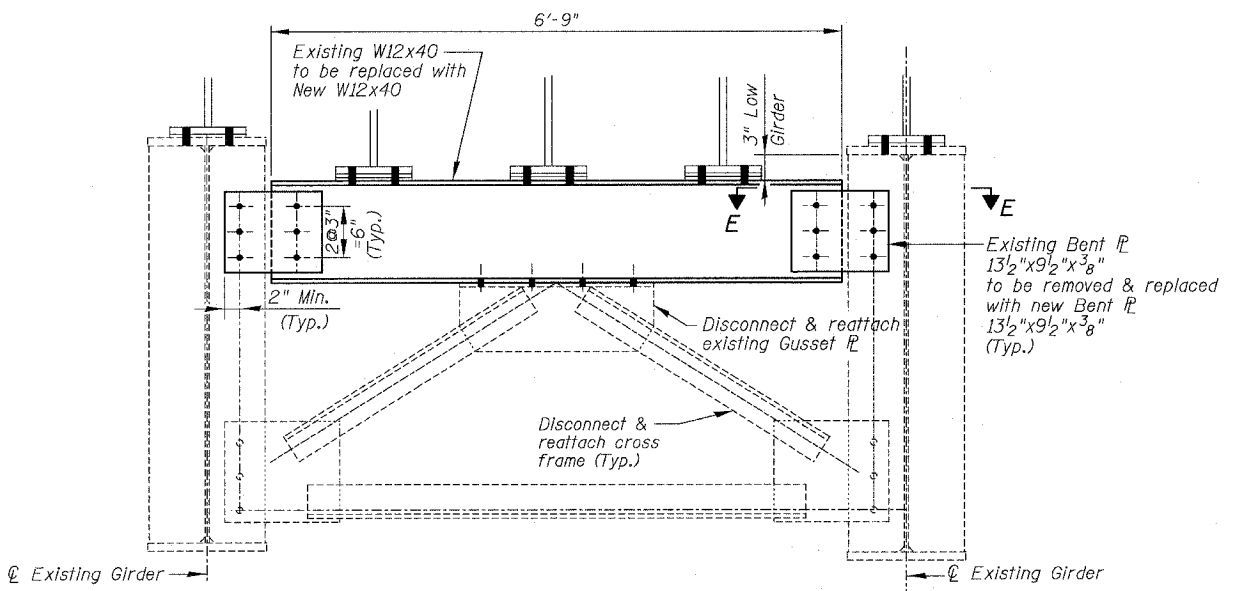


S.N. 016-1111
CF 12 REQ'D



S.N. 016-1111
325-1 2 REQ'D

- NOTES:
1. Use 7/8" H.S. bolts for all cross frame/diaphragm connections at this pier location (excluding stool connections).
 2. Field drill 15/16" holes for 7/8" bolts. Use 2" min. edge distance for all 7/8" bolts unless otherwise noted.
 3. Calculated weight of Structural Steel used for the Item "Furnishing & Erecting Structural Steel" = 6,420 Lbs.
 4. Dimensions shown to be field verified as indicated in Structural General Notes. Cost included in Field Measurements (see Special Provisions for details).



S.N. 016-1111
319-1 2 REQ'D

BILL OF MATERIAL

Item	Unit	Quantity
Furnishing & Erecting Structural Steel	Lum Sum	0.03
Structural Steel Removal	Pound	5,640

BOWMAN, BARRETT & ASSOCIATES INC.
CONSULTING ENGINEERS
Chicago, Illinois
312.228.0100
www.bbainc.com

REVISIONS	
NAME	DATE
ADDENDUM NO. 1	6/29/08

ILLINOIS DEPARTMENT OF TRANSPORTATION
F.A.I. 94/90 (DAN RYAN EXPRESSWAY)
SB DAN RYAN ELEVATED BRIDGE
REPAIR FROM 15TH TO 28TH STREETS
DIAPHRAGM REPLACEMENT
PIER 7, SN 016-1111
SCALE: NTS
DATE: 5/25/2006
DRAWN BY: BDC
CHECKED BY: IYL

F:\660\0000\BRIDGE\2003\029I\SHEETS\660_21_016-1111\FR11A08