

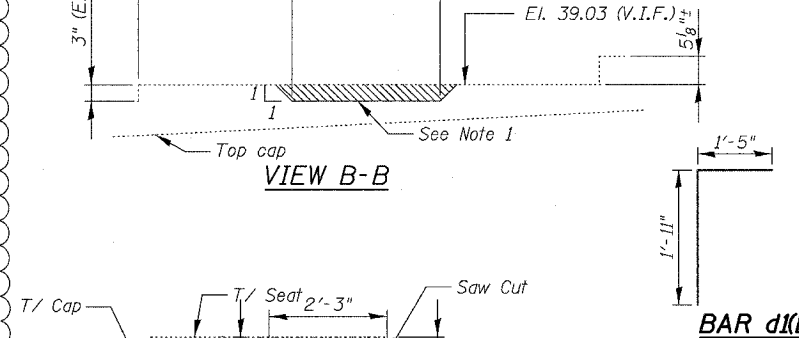
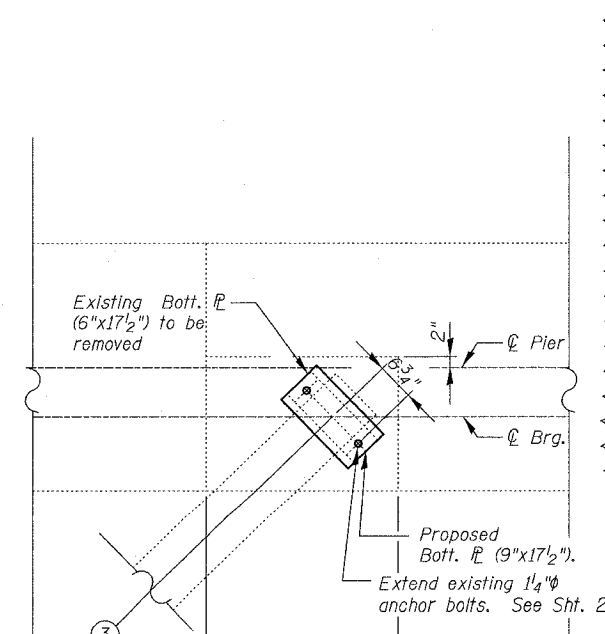
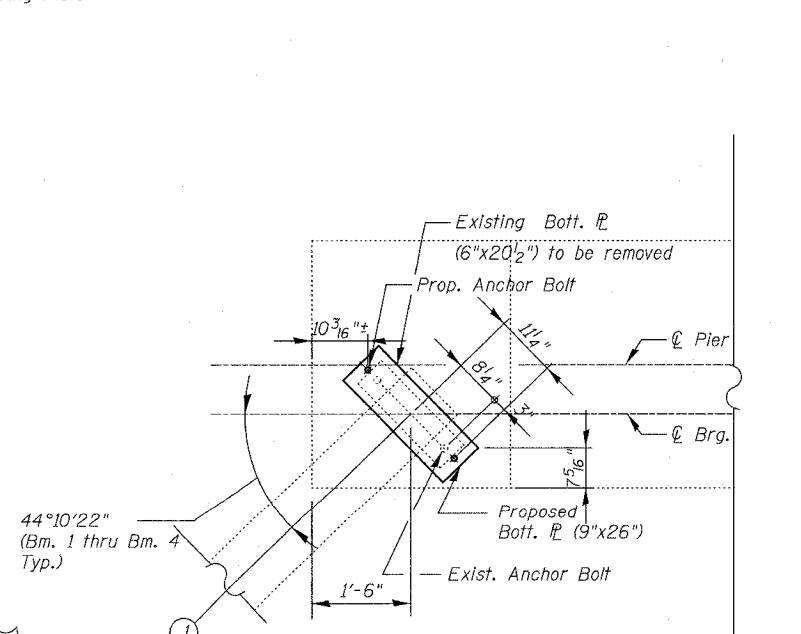
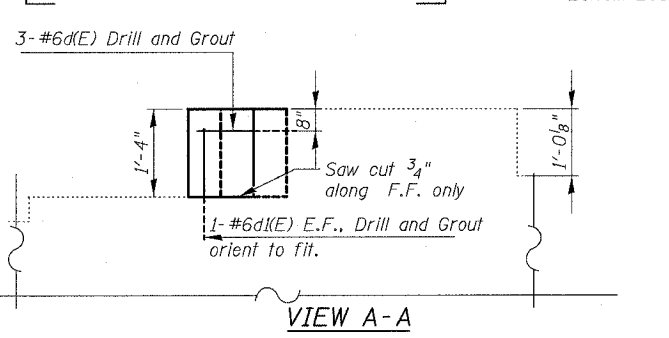
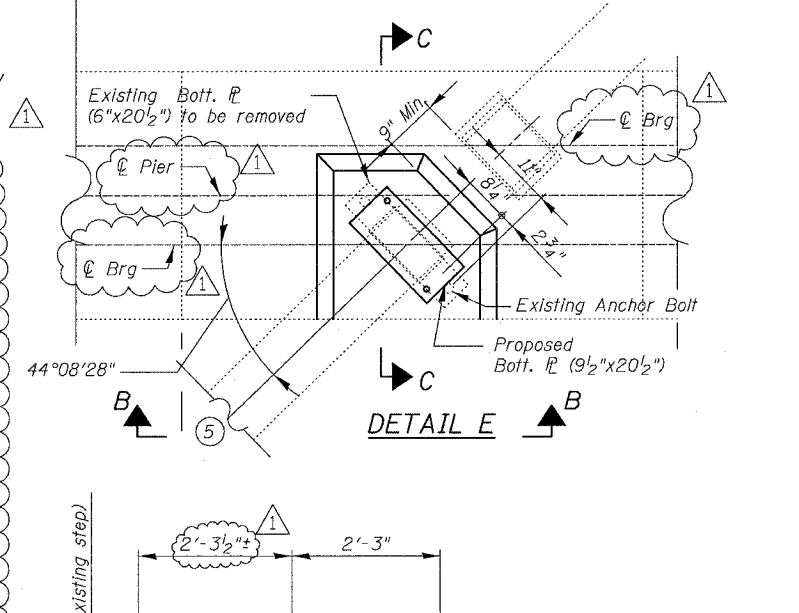
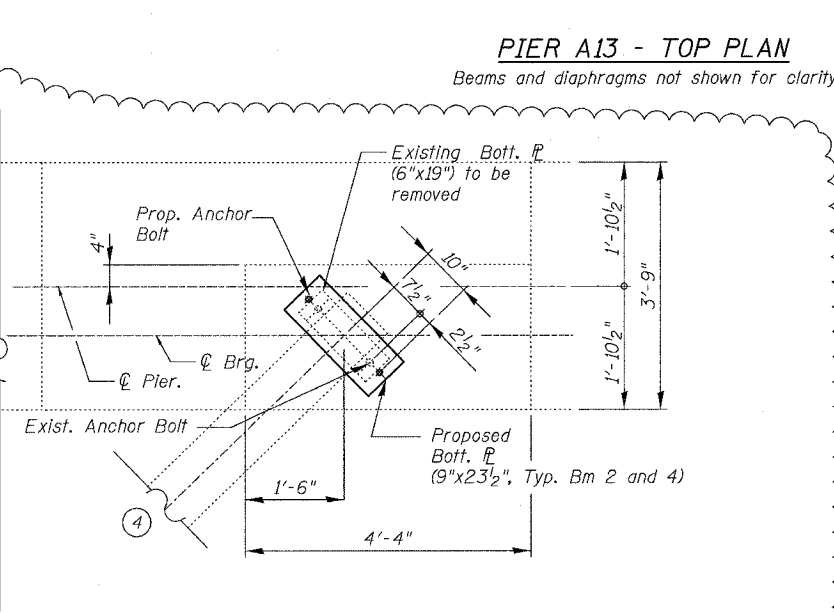
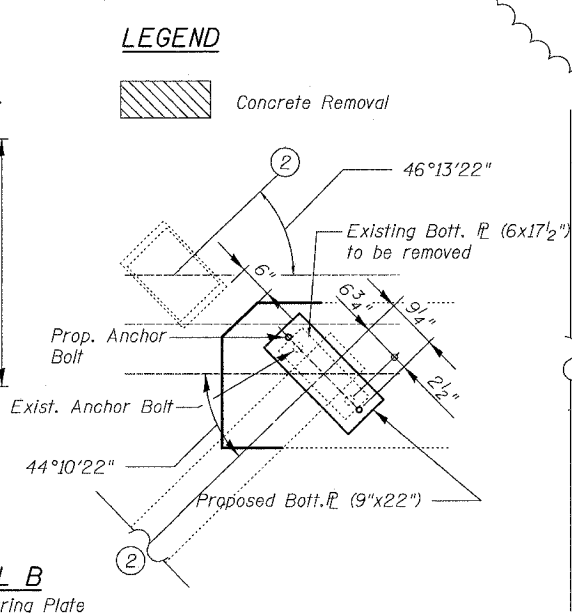
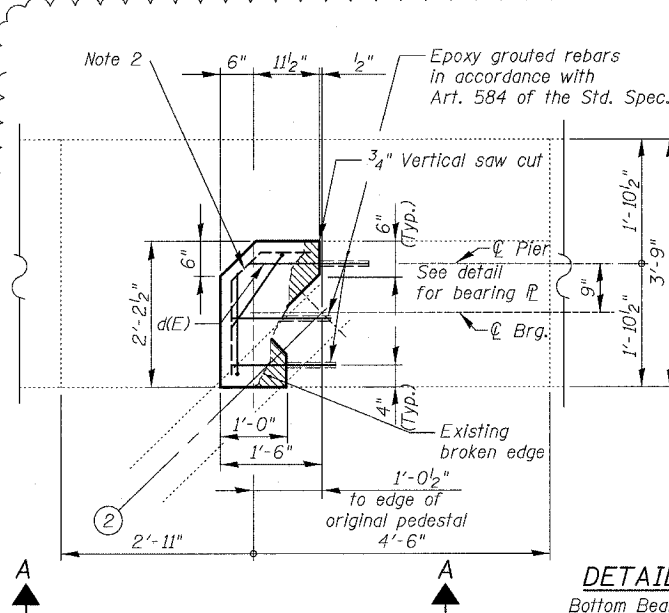
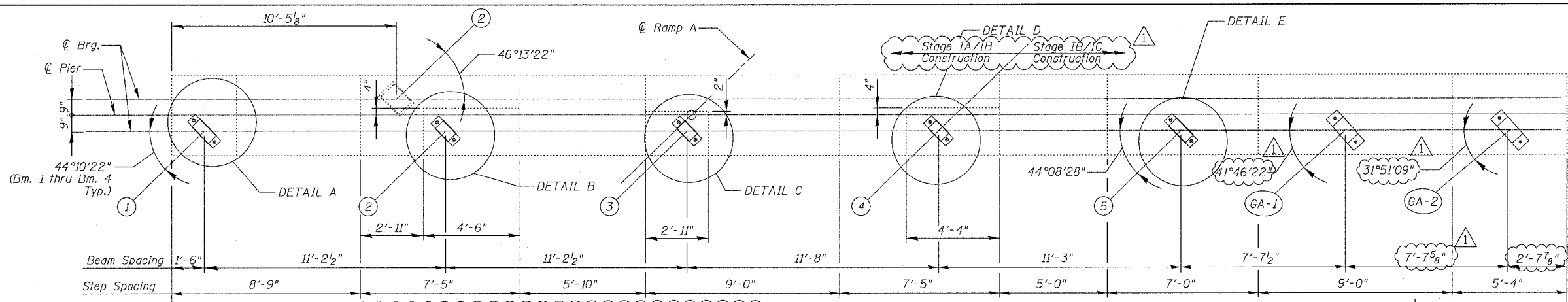
F.A.I.	SECTION	COUNTY	TOTAL SHEETS	SHEET NO.
94/90	2003-0291	COOK	344	275
STA.		TO STA.		
FED. ROAD DIST. NO.	ILLINOIS	FED. AID PROJECT		

62581



BILL OF MATERIAL

Item	Unit	Total
Concrete Removal	Cu. Yd.	1.1
Concrete Superstructure	Cu. Yd.	0.2
Reinforcement Bars, Epoxy Coated.	Pound	20



- Notes:**
- Remove 3" of existing seat concrete as shown. Saw cut front face. Remove concrete to within 1/2"± of that indicated and finish remaining removal by grinding to obtain a level bearing surface.
 - Provide 6x6-W4.0xW4.0 W.W.F. along side and top faces with 2" cover bend and form to concrete shape as required. Cost included with Reinforcement Bars, Epoxy Coated.
 - Saw cuts are included with Concrete Removal.

BILL OF BARS

BAR NO.	SIZE	LENGTH	SHAPE
d(E)	#6	1'-10"	
d(I/E)	#6	3'-4"	□

REVISIONS		DATE
NAME		
ADDENDUM NO. 1		6/29/06

ILLINOIS DEPARTMENT OF TRANSPORTATION
 F.A.I. 94/90 (DAN RYAN EXPRESSWAY)
 SB DAN RYAN ELEVATED BRIDGE
 PIER A13, SN 016-1067
 BEARING AND PEDESTAL DETAILS

SCALE: NTS
 DATE: 5/25/2006

DRAWN BY: BDC
 CHECKED BY: IYL

BOWMAN, BARRETT & ASSOCIATES INC.
 CONSULTING ENGINEERS
 Chicago, Illinois
 312.228.0100
 www.bbainc.com

4/23/2006 4:24 PM