

62581



LOCATION OF SECTION INDICATED THUS: — ■ —

STATE OF ILLINOIS  
DEPARTMENT OF TRANSPORTATION  
DIVISION OF HIGHWAYS

PLANS FOR PROPOSED  
FEDERAL AID HIGHWAY

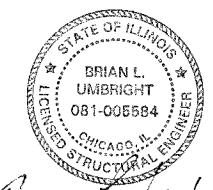
F.A.I. ROUTE 94/90 (DAN RYAN EXPRESSWAY)  
SB DAN RYAN ELEVATED BRIDGE  
REPAIR FROM 15TH TO 28TH STREETS

SECTION 2003-029I  
COOK COUNTY  
C-91-083-03

NOTE: WHEREVER IN THESE PLANS REFERENCE IS MADE TO SECTION 2003-029I IT SHALL MEAN SECTION 2003-029I.



SIGNED Richard W. Stafford  
DATE: APRIL 15, 2006  
EXPIRES: NOVEMBER 30, 2007  
SHEETS: ALL ROADWAY SHEETS



SIGNED Brian L. Umbright  
DATE: APRIL 15, 2006  
EXPIRES: NOVEMBER 30, 2006  
SHEETS: ALL STRUCTURAL SHEETS EXCEPT FINGER PLATE JOINTS

STATE OF ILLINOIS  
DEPARTMENT OF TRANSPORTATION  
DIVISION OF HIGHWAYS

SUBMITTED April 19 2006  
Diane M. O'Keefe  
DEPUTY DIRECTOR OF HIGHWAYS, REGION ENGINEER

Mike Fine  
ENGINEER OF DESIGN AND ENVIRONMENT

Milton R. Sev  
DIRECTOR OF HIGHWAYS/CHIEF ENGINEER

PRINTED BY THE AUTHORITY  
OF THE STATE OF ILLINOIS

BOWMAN, BARRETT & ASSOCIATES INC.  
CONSULTING ENGINEERS  
Chicago, Illinois  
312.228.0100  
www.bbandainc.com

INDEX OF SHEETS  
FOR INDEX OF SHEETS, SEE SHEET NO. 2

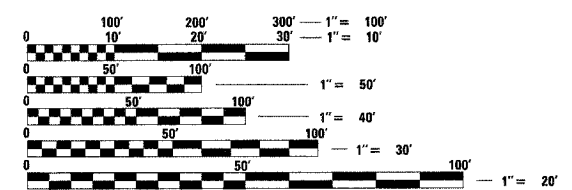
DESIGN NUMBER  
D-91-417-01

DESIGN DESIGNATION  
DAN RYAN EXPRESSWAY: 15309(35) ARTERIAL 38.10 (PCC-30)

TRAFFIC VOLUMES AND SPEEDS

	ADT (2020)	DESIGN SPEED	POSTED SPEED
NB LOCAL LANES	69945	60	45
SB LOCAL LANES	63440	60	45
SB EXPRESS LANES	98495	60	50
SB EXPRESS LANES	100155	60	50

PROJECT LOCATED IN CITY OF CHICAGO

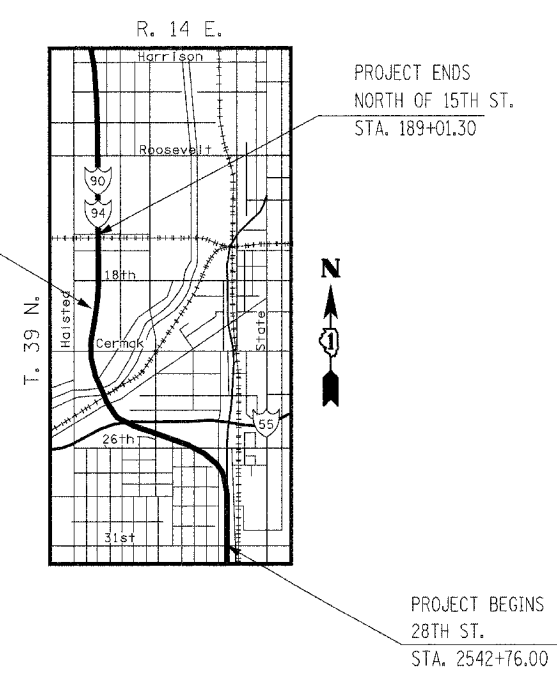


FULL SIZE PLANS HAVE BEEN PREPARED USING STANDARD ENGINEERING SCALES. REDUCED SIZED PLANS WILL NOT CONFORM TO STANDARD SCALES. IN MAKING MEASUREMENTS ON REDUCED PLANS, THE ABOVE SCALES MAY BE USED.

FOR UTILITY LOCATION INFORMATION FOR EXCAVATION CALL CHICAGO UTILITY ALERT NETWORK (C.U.A.N.) 312-744-7000

CONTRACT NO. 62581

JOINT REPLACEMENT AND OVERLAY TO THE FOLLOWING BRIDGES: (SOUTH TO NORTH)  
SN 016-1117, SN 016-1067  
SN 016-1116, SN 016-1115  
SN 016-1062, SN 016-1046  
SN 016-1050, SN 016-1066  
SN 016-1114, SN 016-1113  
SN 016-1112, SN 016-1111  
SN 016-1110 & SN 016-0137  
(14 TOTAL STRUCTURES)



LOCATION MAP

GROSS LENGTH OF PROJECT = 10,487 FT = 1,986 Miles  
NET LENGTH OF PROJECT = 10,487 FT = 1,986 Miles

SEE FINGER PLATE JOINT PLANS FOR APPLICABLE SEALS & SIGNATURES

DISTRICT 1 DESIGN/PLAN PREPARATION ENGINEER: RAJENDRA SHAH (847) 705-4555