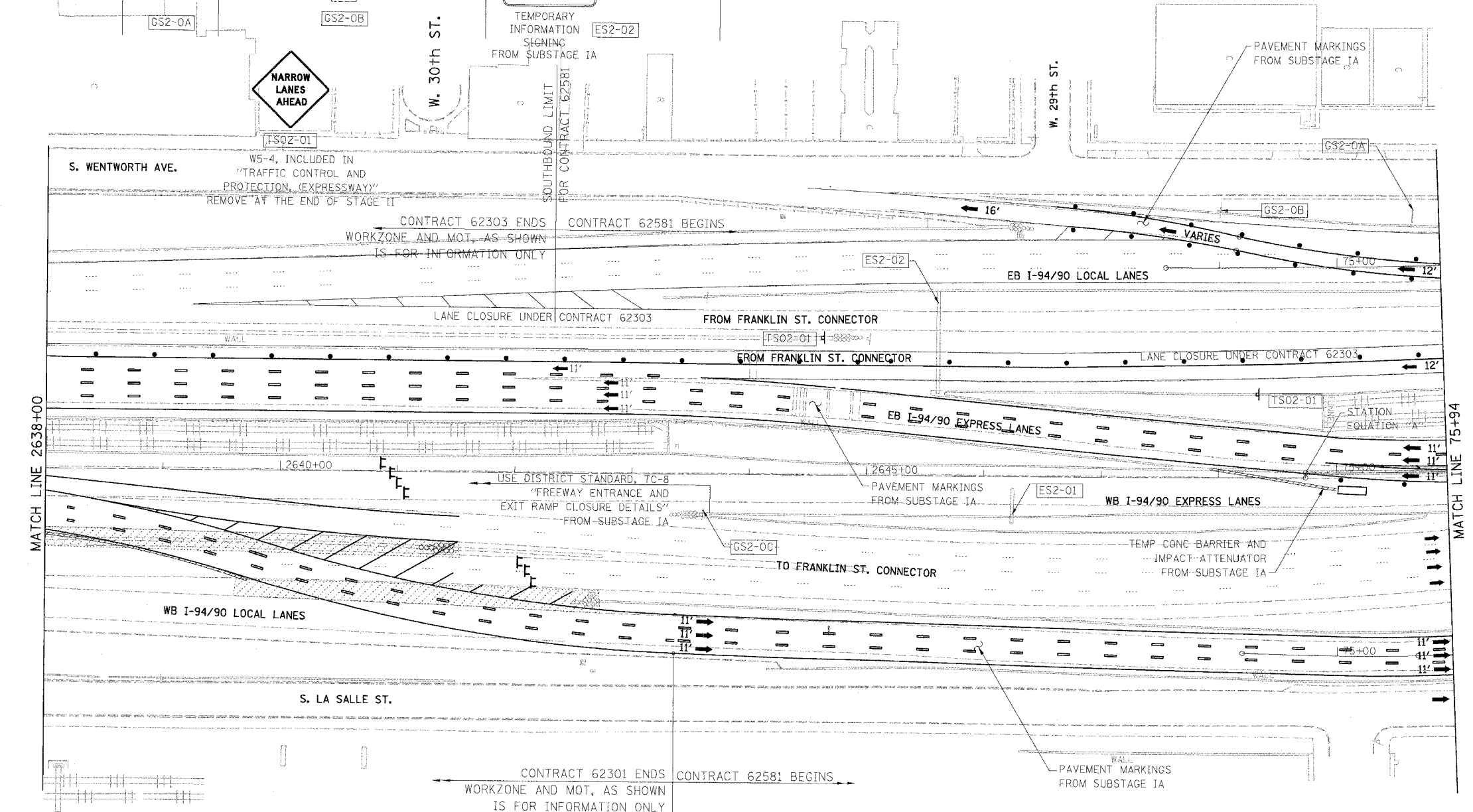


F.A.I.	SECTION	COUNTY	TOTAL SHEETS	SHEET NO.
94/90	2003-0291	COOK	344	47
STA.		TO STA.		
FED. ROAD DIST. NO.	ILLINOIS	FED. AID	PROJECT	
62581				

**Sx Sox Parking**  
**Cash and Green Coupons Exit 35th St.**  
**Red Coupons Exit Here**

SEE NOTE 2C  
**EXIT 55A**  
**35th St**  
**1000 FEET**  
 TEMPORARY INFORMATION SIGNING FROM SUBSTAGE IA



- LEGEND**
- WORK ZONE
  - DIRECTION OF TRAFFIC
  - DRUM OR BARRICADE TYPE II WITH STEADY BURN LIGHT
  - IMPACT ATTENUATORS, TEMPORARY (NON-REDIRECTIVE), TEST LEVEL 3
  - BARRICADE TYPE III
  - TEMPORARY CONCRETE BARRIER
  - ① LINE 4" (YELLOW EDGE LINE)
  - ② LINE 4" (WHITE EDGE LINE)
  - ③ LINE 4" (SKIP DASH, 6' SKIP - 2' DASH, WHITE)
  - ④ LINE 5" (SKIP DASH, 30' SKIP - 10' DASH, WHITE)
  - ⑤ LINE 8" (WHITE LINE)
  - ⑥ LINE 8" (SKIP DASH, 12' SKIP - 3' DASH, WHITE)
  - ⑦ LINE 12" (DIAGONAL, 30' C-C)
  - ⑧ LINE 12" (DIAGONAL, 500' C-C)
  - ⑨ LETTERS AND SYMBOLS
  - ESx-xx EXISTING OVERHEAD OR CANTILEVER SIGNS
  - GSx-xx EXISTING POST MOUNTED SIGNS
  - TSx-xx TEMPORARY SIGNS

SIGN PANEL COVER  
**EXIT 53B**  
**SOUTH Stevenson Expy**  
**St Louis**  
**RIGHT LANE**

**EXIT 53C**

**SPEED LIMIT 45**

USE DISTRICT STANDARD, TC-8 "FREEWAY ENTRANCE AND EXIT RAMP CLOSURE DETAILS" FROM SUBSTAGE IA

USE DISTRICT ONE STANDARD, TC-17 "TRAFFIC CONTROL DETAILS FOR FREEWAY SHOULDER CLOSURES PARTIAL RAMP CLOSURES" FROM SUBSTAGE IA

STATION EQUATION "A"  
 Sta 2648+74.34 BK  
 Sta 74+73.48 AH

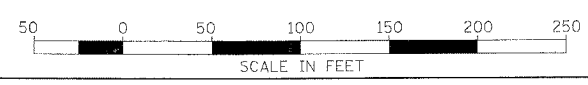
NOTE:  
 ALL PAVEMENT MARKINGS ON THIS SHEET WILL BE PAVEMENT MARKING TAPE, TYPE III, UNLESS OTHERWISE NOTED.

REVISIONS	
NAME	DATE

ILLINOIS DEPARTMENT OF TRANSPORTATION  
 F.A.I. 94/90 (DAN RYAN EXPRESSWAY)  
 SB DAN RYAN ELEVATED BRIDGE  
 REPAIR FROM 15TH TO 28TH STREETS  
 MAINTENANCE OF TRAFFIC PLAN - SUBSTAGE IB  
 STA. 2638+00 TO STA. 75+94

SCALE: 1"=50'  
 DATE: 5/12/2006

DRAWN BY: RA  
 CHECKED BY: RS



BOWMAN, BARRETT & ASSOCIATES INC.  
 CONSULTING ENGINEERS  
 Chicago, Illinois  
 312.228.0100  
 www.bbandainc.com

9/5/2006 9:58:48 AM