

F.A.I.	SECTION	COUNTY	TOTAL SHEETS	SHEET NO.
94/90	2003-029B	COOK	344	58
STA.	TO STA.			
FED. ROAD DIST. NO.	ILLINOIS	FED. AID PROJECT		

62581

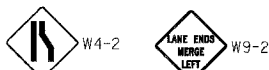
U.s. Cellular Field
TOURIST INFO
Turn Radio To
1620 AM

GS13-0A

EXIT 53
Stevenson Expy
St. Louis
Lake Shore Dr
1/2 MILE

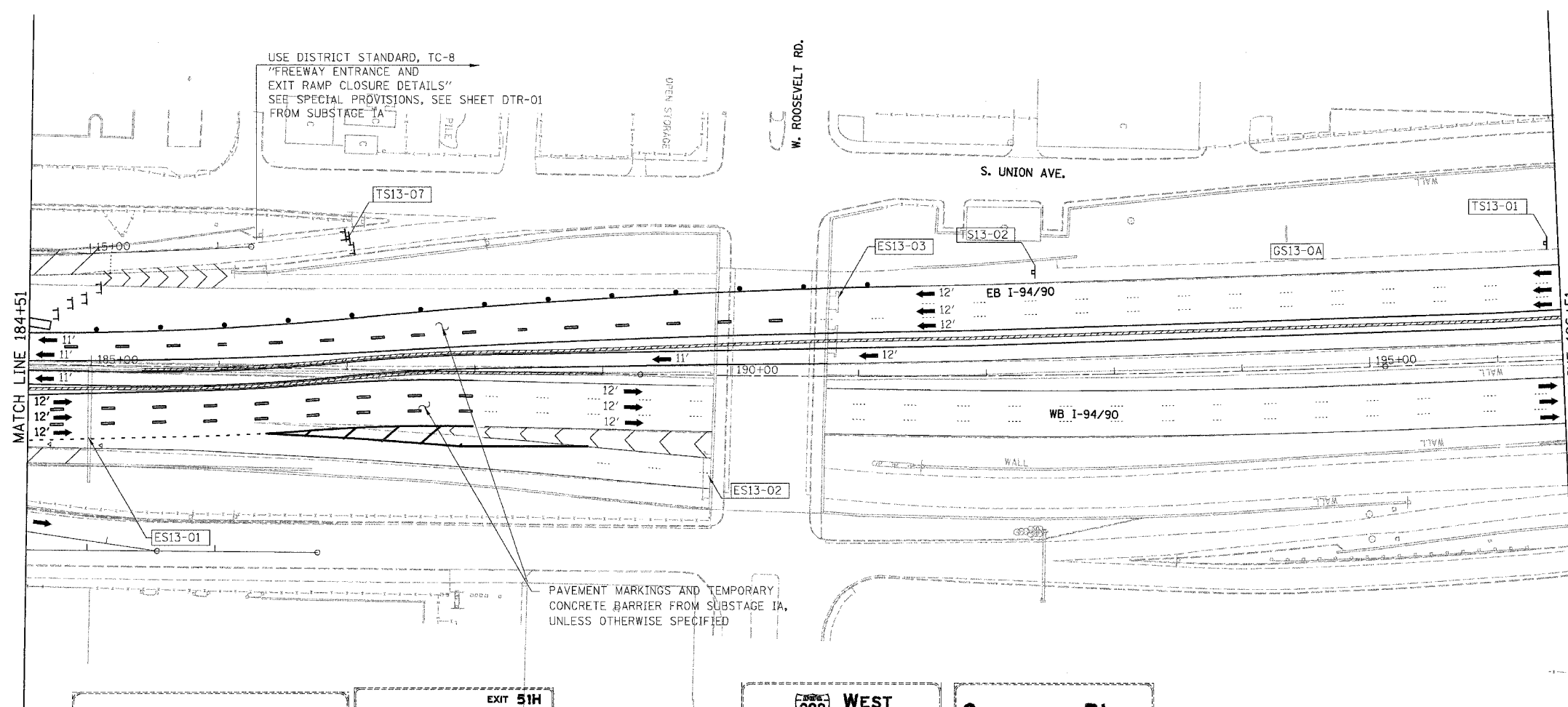
EXIT 52C
18th St
1/4 MILE

ES13-03
BRIDGE MOUNTED



TS13-01 TS13-02

INCLUDED IN "TRAFFIC CONTROL AND PROTECTION "EXPRESSWAYS" FROM SUBSTAGE 1A



LEGEND

- WORK ZONE
- DIRECTION OF TRAFFIC
- DRUM OR BARRICADE TYPE II WITH STEADY BURN LIGHT
- IMPACT ATTENUATORS, TEMPORARY (NON-REDIRECTIVE), TEST LEVEL 3
- BARRICADE TYPE III
- TEMPORARY CONCRETE BARRIER
- ① LINE 4" (YELLOW EDGE LINE)
- ② LINE 4" (WHITE EDGE LINE)
- ③ LINE 4" (SKIP DASH, 6' SKIP - 2' DASH, WHITE)
- ④ LINE 5" (SKIP DASH, 30' SKIP - 10' DASH, WHITE)
- ⑤ LINE 8" (WHITE LINE)
- ⑥ LINE 8" (SKIP DASH, 12' SKIP - 3' DASH, WHITE)
- ⑦ LINE 12" (DIAGONAL, 30' C-C)
- ⑧ LINE 12" (DIAGONAL, 500' C-C)
- ⑨ LETTERS AND SYMBOLS
- ESx-xx EXISTING OVERHEAD OR CANTILEVER SIGNS
- GSx-xx EXISTING POST MOUNTED SIGNS
- TSx-xx TEMPORARY SIGNS

MATCH LINE 184+51

MATCH LINE 196+51

SPEED LIMIT 45

EXIT 90 WEST Kennedy Expy
Wisconsin

LEFT 2 LANES

TS13-04
TEMPORARY INFORMATION SIGNING FROM SUBSTAGE 1A

EXIT 51H
Eisenhower Expy
West Suburbs Chicago Loop

ES13-01

SIGN PANEL COVER FROM SUBSTAGE 1A

SPEED LIMIT 45

TS13-05
TEMPORARY INFORMATION SIGNING FROM SUBSTAGE 1A

EXIT 290 WEST Eisenhower Expy
West Suburbs LEFT LANE

Congress Pkwy Chicago Loop RIGHT LANE

ES13-02
BRIDGE MOUNTED

Use Canalport Ave

TS13-07
INCLUDED IN "TRAFFIC CONTROL AND PROTECTION FOR DETOUR ROUTE SIGNING 1' FROM SUBSTAGE 1A

NOTE:

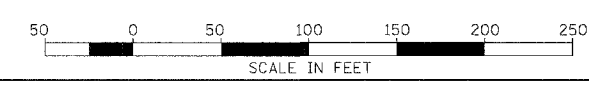
ALL PAVEMENT MARKINGS ON THIS SHEET WILL BE PAVEMENT MARKING TAPE, TYPE III, UNLESS OTHERWISE NOTED.

MOT-28

REVISIONS	
NAME	DATE

ILLINOIS DEPARTMENT OF TRANSPORTATION
F.A.I. 94/90 (DAN RYAN EXPRESSWAY)
SB DAN RYAN ELEVATED BRIDGE
REPAIR FROM 15TH TO 28TH STREETS
MAINTENANCE OF TRAFFIC PLAN - SUBSTAGE 1B
STA. 184+51 TO STA. 196+51

SCALE: 1"=50'
DATE: 4/14/2006
DRAWN BY: RA
CHECKED BY: RS



BOWMAN, BARRETT & ASSOCIATES INC.
CONSULTING ENGINEERS
Chicago, Illinois
312.228.0100
www.bbainc.com

4/14/2006 10:02:33 AM