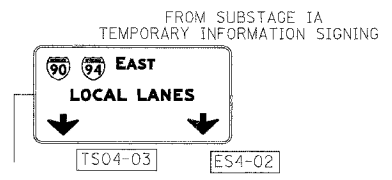
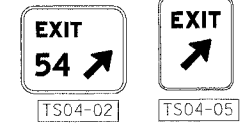


F.A.I.	SECTION	COUNTY	TOTAL SHEETS	SHEET NO.
94/90	2003-029I	COOK	344	64
STA.		TO STA.		
FED. ROAD DIST. NO.		ILLINOIS	FED. AID PROJECT	
62581				

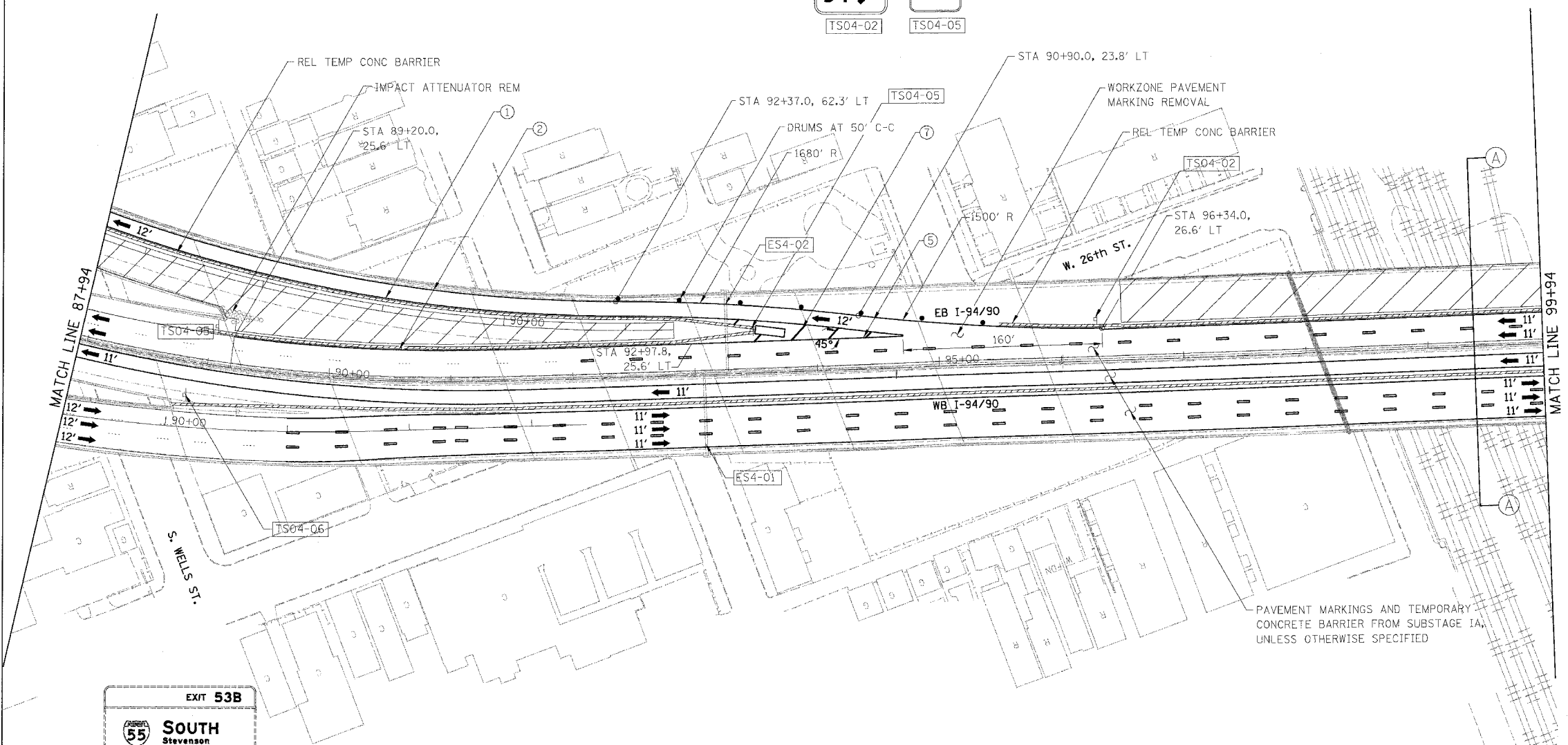
NOTE:
EXIT RAMP FROM EB I-94/90 TO 31ST ST SHOULD BE OPEN ALL THE TIME DURING CONSTRUCTION. CHANGE IN EXIT LOCATION FROM THE EB MAINLINE COULD BE DONE AT ANY TIME AS SOON AS THE CONTRACTOR IS DONE WITH THE OUTSIDE LANE WORK, OR AS DIRECTED BY THE RESIDENT ENGINEER.



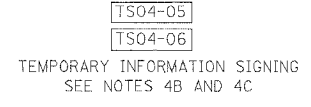
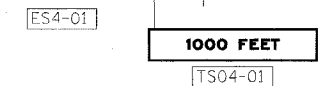
TEMPORARY INFORMATION SIGNING
RELOCATED FROM SUBSTAGE IB



- LEGEND**
- WORK ZONE
 - DIRECTION OF TRAFFIC
 - DRUM OR BARRICADE TYPE II WITH STEADY BURN LIGHT
 - IMPACT ATTENUATORS, TEMPORARY (NON-REDIRECTIVE), TEST LEVEL 3
 - BARRICADE TYPE III
 - TEMPORARY CONCRETE BARRIER
 - ① LINE 4" (YELLOW EDGE LINE)
 - ② LINE 4" (WHITE EDGE LINE)
 - ③ LINE 4" (SKIP DASH, 6' SKIP - 2' DASH, WHITE)
 - ④ LINE 5" (SKIP DASH, 30' SKIP - 10' DASH, WHITE)
 - ⑤ LINE 8" (WHITE LINE)
 - ⑥ LINE 8" (SKIP DASH, 12' SKIP - 3' DASH, WHITE)
 - ⑦ LINE 12" (DIAGONAL, 30' C-C)
 - ⑧ LINE 12" (DIAGONAL, 500' C-C)
 - ⑨ LETTERS AND SYMBOLS
 - EXISTING OVERHEAD OR CANTILEVER SIGNS
 - EXISTING POST MOUNTED SIGNS
 - TEMPORARY SIGNS



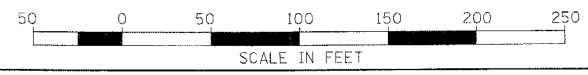
NOTE:
4B. IMPORTANT TO COORDINATE NEXT EXIT STREET NAME WITH CONTRACT 62303 THIS CONTRACT 62581 IS RESPONSIBLE FOR THE TEMPORARY SIGNING.
4C. REMOVE TEMPORARY SIGN TS04-05, AT THE END OF SUBSTAGE IC.



NOTE:
ALL PAVEMENT MARKINGS ON THIS SHEET WILL BE PAVEMENT MARKING TAPE, TYPE III, UNLESS OTHERWISE NOTED. MOT-34

REVISIONS	
NAME	DATE

ILLINOIS DEPARTMENT OF TRANSPORTATION
F.A.I. 94/90 (DAN RYAN EXPRESSWAY)
SB DAN RYAN ELEVATED BRIDGE
REPAIR FROM 15TH TO 28TH STREETS
MAINTENANCE OF TRAFFIC PLAN - SUBSTAGE IC
STA. 87+94. TO STA. 99+94
SCALE: 1"=50'
DATE: 5/12/2006
DRAWN BY: RA
CHECKED BY: RS



BOWMAN, BARRETT & ASSOCIATES INC.
CONSULTING ENGINEERS
Chicago, Illinois
312.228.0100
www.bbainc.com