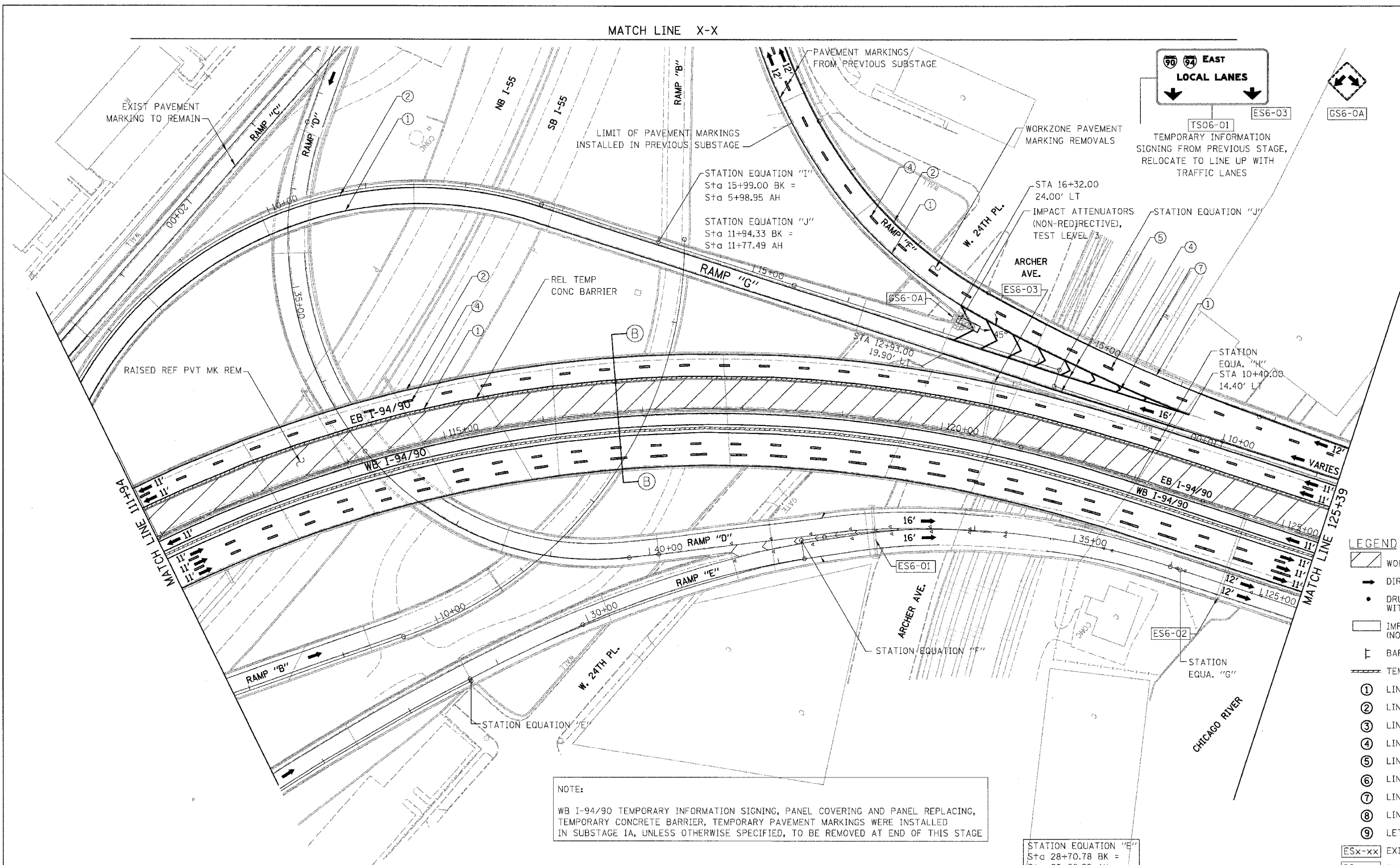
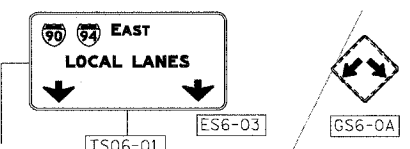


F.A.I.	SECTION	COUNTY	TOTAL SHEETS	SHEET NO.
94/90	• 2003-029	COOK	344	81
STA.	TO STA.			
FED. ROAD DIST. NO.	ILLINOIS FED. AID PROJECT			
62581				



MATCH LINE X-X



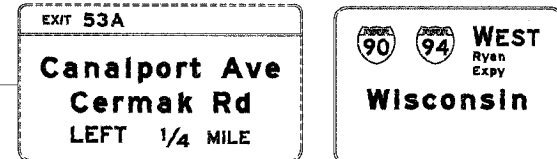
NOTE:
WB I-94/90 TEMPORARY INFORMATION SIGNING, PANEL COVERING AND PANEL REPLACING, TEMPORARY CONCRETE BARRIER, TEMPORARY PAVEMENT MARKINGS WERE INSTALLED IN SUBSTAGE IA, UNLESS OTHERWISE SPECIFIED, TO BE REMOVED AT END OF THIS STAGE

- LEGEND**
- WORK ZONE
 - DIRECTION OF TRAFFIC
 - DRUM OR BARRICADE TYPE II WITH STEADY BURN LIGHT
 - IMPACT ATTENUATORS, TEMPORARY (NON-REDIRECTIVE), TEST LEVEL 3
 - BARRICADE TYPE III
 - TEMPORARY CONCRETE BARRIER
 - LINE 4" (YELLOW EDGE LINE)
 - LINE 4" (WHITE EDGE LINE)
 - LINE 4" (SKIP DASH, 6' SKIP - 2' DASH, WHITE)
 - LINE 5" (SKIP DASH, 30' SKIP - 10' DASH, WHITE)
 - LINE 8" (WHITE LINE)
 - LINE 8" (SKIP DASH, 12' SKIP - 3' DASH, WHITE)
 - LINE 12" (DIAGONAL, 30' C-C)
 - LINE 12" (DIAGONAL, 500' C-C)
 - LETTERS AND SYMBOLS
 - EXISTING OVERHEAD OR CANTILEVER SIGNS
 - EXISTING POST MOUNTED SIGNS
 - TEMPORARY SIGNS

NOTE:
ALL PAVEMENT MARKINGS ON THIS SHEET WILL BE PAVEMENT MARKING TAPE, TYPE III, UNLESS OTHERWISE NOTED. MOT-51

REVISIONS	
NAME	DATE

ILLINOIS DEPARTMENT OF TRANSPORTATION
F.A.I. 94/90 (DAN RYAN EXPRESSWAY)
SB DAN RYAN ELEVATED BRIDGE
REPAIR FROM 15TH TO 28TH STREETS
MAINTENANCE OF TRAFFIC PLAN - STAGE II
STA. 111+94 TO STA. 125+39
SCALE: 1"=50'
DATE: 4/14/2006
DRAWN BY: RA
CHECKED BY: RS

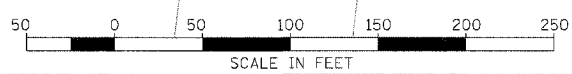


STATION EQUATION "E"
Sta 28+70.78 BK =
Sta 28+68.28 AH

STATION EQUATION "F"
Sta 32+25.87 BK =
Sta 32+25.87 AH

STATION EQUATION "G"
Sta 36+10.50 BK =
Sta 124+16.76 AH

STATION EQUATION "H"
Sta 15+99.00 BK =
Sta 5+98.95 AH



BOWMAN, BARRETT & ASSOCIATES INC
CONSULTING ENGINEERS
Chicago, Illinois
312.228.0100
www.bbena.com

4/14/2006