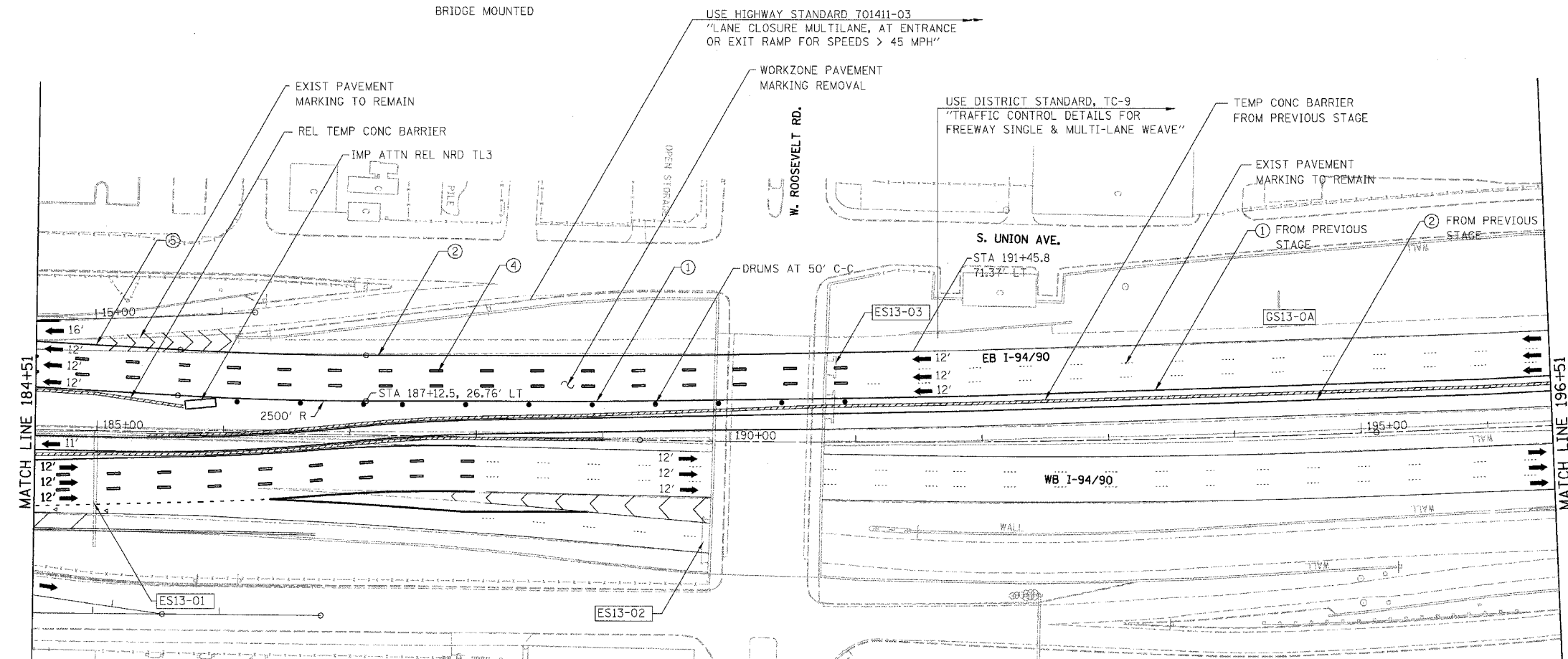


F.A.I.	SECTION	COUNTY	TOTAL SHEETS	SHEET NO.
94/90	2003-0293	COOK	344	88
STA.	TO STA.			
FED. ROAD DIST. NO.	ILLINOIS	FED. AID PROJECT		
62581				

U.s. Cellular Field  
TOURIST INFO  
Turn Radio To  
1620 AM

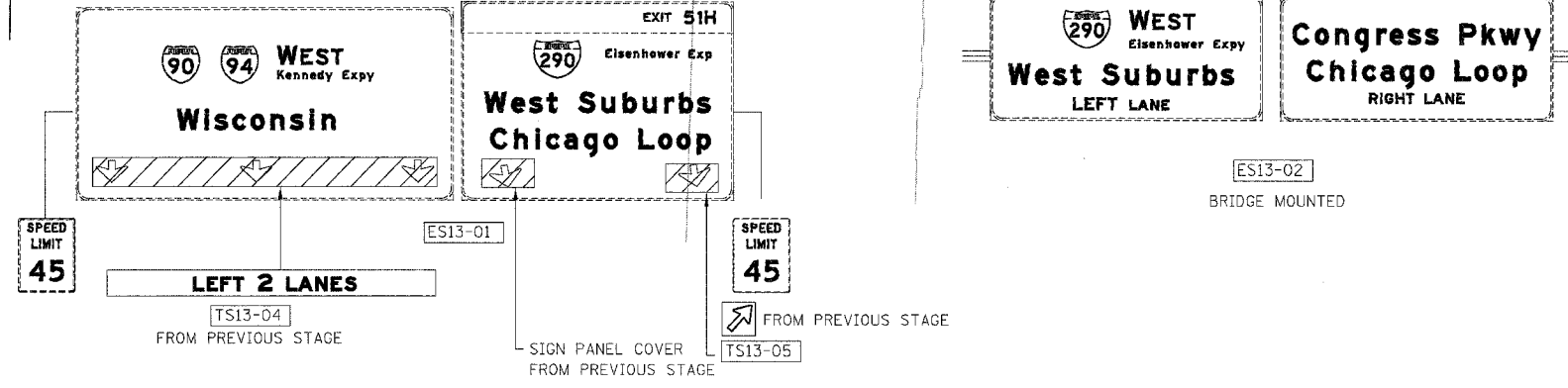
EXIT 53  
Stevenson Expy  
St. Louis  
Lake Shore Dr  
1/2 MILE

EXIT 52C  
18th St  
1/4 MILE



- LEGEND**
- WORK ZONE
  - DIRECTION OF TRAFFIC
  - DRUM OR BARRICADE TYPE II WITH STEADY BURN LIGHT
  - IMPACT ATTENUATORS, TEMPORARY (NON-REDIRECTIVE), TEST LEVEL 3
  - BARRICADE TYPE III
  - TEMPORARY CONCRETE BARRIER
  - ① LINE 4" (YELLOW EDGE LINE)
  - ② LINE 4" (WHITE EDGE LINE)
  - ③ LINE 4" (SKIP DASH, 6' SKIP - 2' DASH, WHITE)
  - ④ LINE 5" (SKIP DASH, 30' SKIP - 10' DASH, WHITE)
  - ⑤ LINE 8" (WHITE LINE)
  - ⑥ LINE 8" (SKIP DASH, 12' SKIP - 3' DASH, WHITE)
  - ⑦ LINE 12" (DIAGONAL, 30' C-C)
  - ⑧ LINE 12" (DIAGONAL, 500' C-C)
  - ⑨ LETTERS AND SYMBOLS
  - ESx-xx EXISTING OVERHEAD OR CANTILEVER SIGNS
  - GSx-xx EXISTING POST MOUNTED SIGNS
  - TSx-xx TEMPORARY SIGNS

NOTE:  
WB I-94/90 TEMPORARY INFORMATION SIGNING, PANEL COVERING AND PANEL REPLACING, TEMPORARY CONCRETE BARRIER, TEMPORARY PAVEMENT MARKINGS WERE INSTALLED IN SUBSTAGE 1A, UNLESS OTHERWISE SPECIFIED, TO BE REMOVED AT END OF THIS STAGE



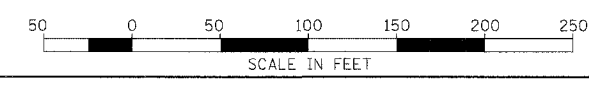
NOTE:  
ALL PAVEMENT MARKINGS ON THIS SHEET WILL BE PAVEMENT MARKING TAPE, TYPE III, UNLESS OTHERWISE NOTED. M0T-58

REVISIONS	
NAME	DATE

ILLINOIS DEPARTMENT OF TRANSPORTATION  
F.A.I. 94/90 (DAN RYAN EXPRESSWAY)  
SB DAN RYAN ELEVATED BRIDGE  
REPAIR FROM 15TH TO 28TH STREETS  
MAINTENANCE OF TRAFFIC PLAN - STAGE II  
STA. 184+51 TO STA. 196+51

SCALE: 1"=50'  
DATE: 4/14/2006

DRAWN BY: RA  
CHECKED BY: RS



BOWMAN, BARRETT & ASSOCIATES INC.  
CONSULTING ENGINEERS  
Chicago, Illinois  
312.228.0100  
www.bbainc.com

4/14/2006 10:03:51 AM