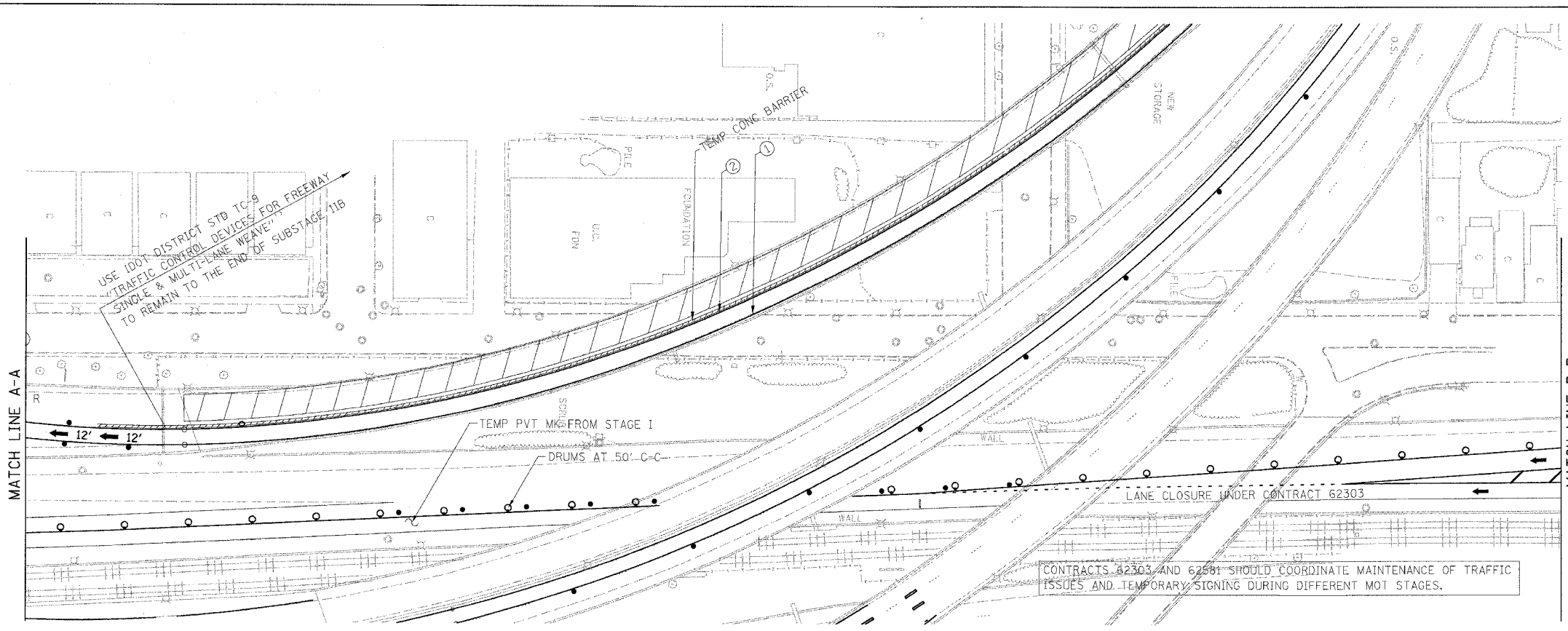
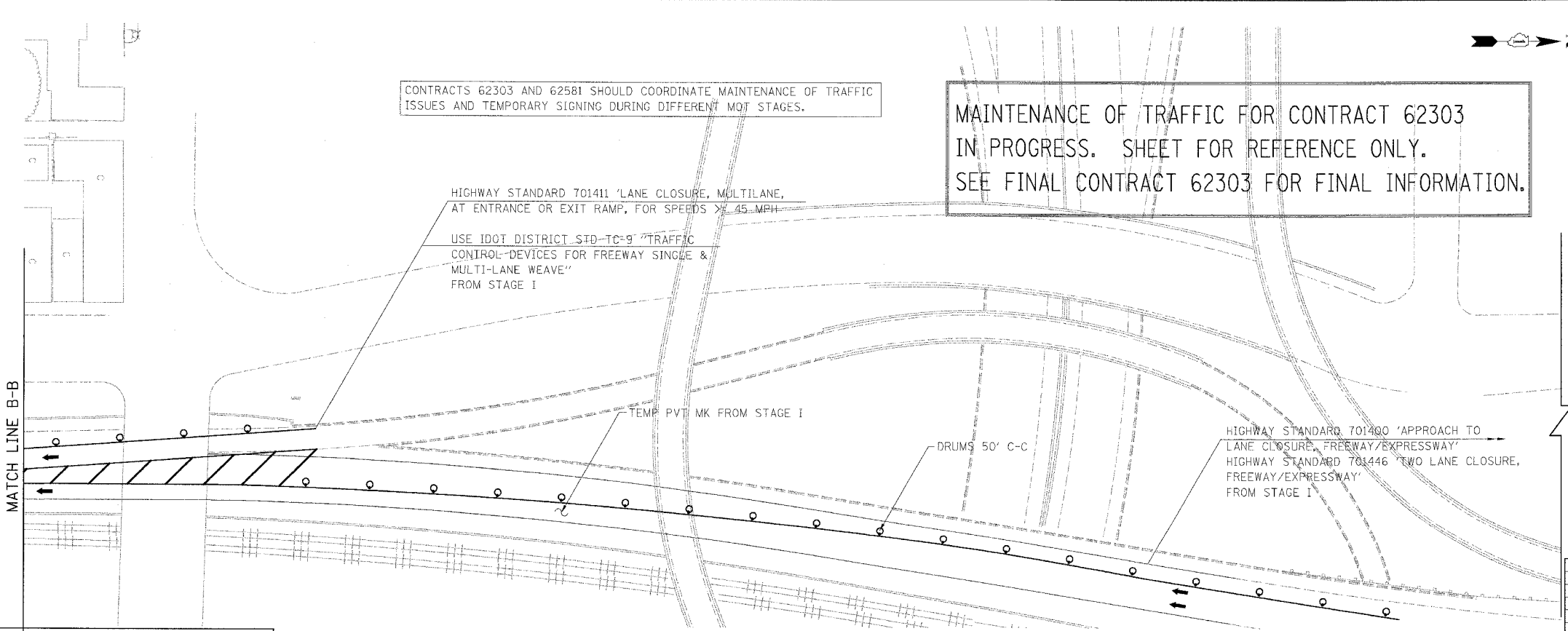


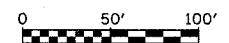
F.A.I.	SECTION	COUNTY	TOTAL SHEETS	SHEET NO.
94/90	*	COOK	344	106
STA.	TO STA.			
FED. ROAD DIST. NO.	ILLINOIS	FED. AID PROJECT		
62303	*12021-922 P12 ETC 2324.6-1P) R-11			



- LEGEND:**
- 1 → LANE NUMBER AND DIRECTION OF TRAFFIC
  - ▨ WORK AREA
  - ▨ TEMPORARY PAVEMENT
  - ⊞ IMPACT ATTENUATORS, TEMPORARY (NON-REDIRECTIVE), TEST LEVEL 3
  - DRUM OR BARRICADE TYPE II WITH STEADY BURNING LIGHT
  - ⊞ BARRICADE TYPE III
  - ▨ TEMPORARY CONCRETE BARRIER
  - ① LINE 4" (YELLOW EDGE)
  - ② LINE 4" (WHITE EDGE)
  - ③ LINE 4" (SKIP DASH, 6' SKIP - 2' DASH, WHITE)
  - ④ LINE 5" (SKIP DASH, 30' SKIP - 10' DASH, WHITE)
  - ⑤ LINE 8" (WHITE GORE LINE)
  - ⑥ LINE 8" (SKIP DASH, 12' SKIP - 3' DASH, WHITE)
  - ⑦ LINE 12" (DIAGONAL, 30' C-C, WHITE)
  - ⑧ LETTERS AND SYMBOLS
  - ES-XXX-XX EXISTING OVERHEAD OR CANTILEVER SIGNS
  - GS-XXX-XX EXISTING POST MOUNTED SIGNS
  - TS-XXX-XX TEMPORARY SIGNS



+XX.XX STATION PROVIDED FROM THE ± SB I-90/94 EXPRESS LANES  
 (+XX.XX) STATION PROVIDED FROM THE ± SB I-90/94 LOCAL LANES



MOT-209

REVISIONS	DATE
NAME	

ILLINOIS DEPARTMENT OF TRANSPORTATION  
 F.A.I. 94/90 (DAN RYAN EXPRESSWAY)  
 GARFIELD BLVD TO 31ST STREET (SB LOCAL LANES)  
 SUGGESTED STAGES OF CONSTRUCTION  
 AND TRAFFIC CONTROL  
 STAGE 2

SCALE: 1"=50'  
 DATE: 5/12/2006

DRAWN BY: RA  
 CHECKED BY: RS

BOWMAN, BARRETT & ASSOCIATES INC  
 CONSULTING ENGINEERS  
 Chicago, Illinois  
 312.228.0100  
 www.bbainc.com

SB I-94/90 EXPRESS LANES TEMPORARY PAVEMENT MARKINGS WERE INSTALLED IN STAGE I AND SUBSTAGE IA, UNLESS OTHERWISE SPECIFIED IN STAGE 2.  
 CROSS OVER RAMP TEMPORARY PAVEMENT MARKINGS INSTALLED IN PREVIOUS STAGE TO REMAIN TO NEXT STAGE, UNLESS OTHERWISE SPECIFIED.

3/22/06 PM