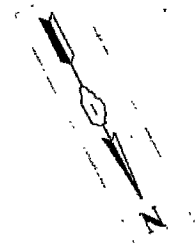
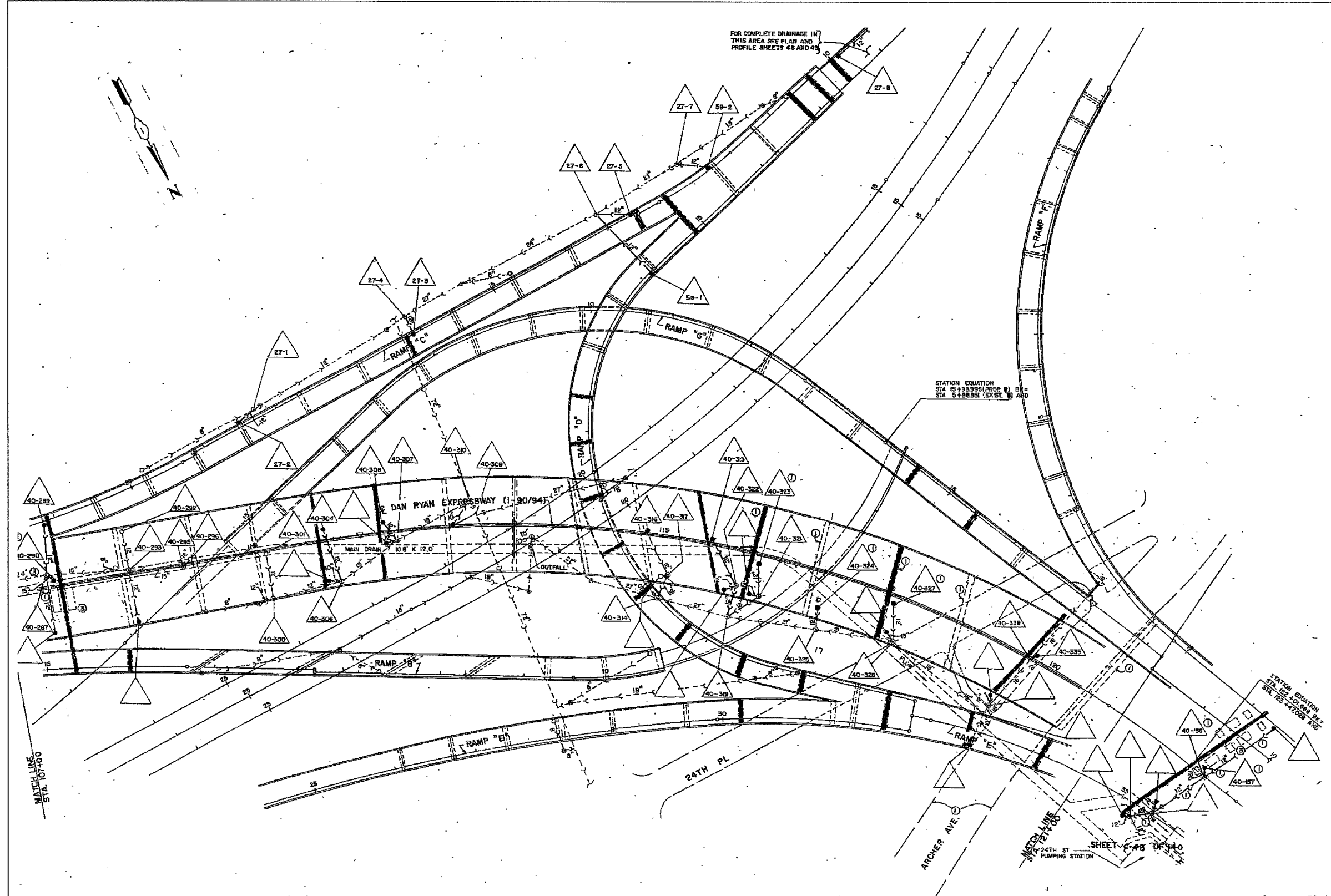


F.A.I.	SECTION	COUNTY	TOTAL SHEETS	SHEET NO.
94/90	2003-029	COOK	344	153
STA.		TO STA.		
FED. ROAD DIST. NO.		ILLINOIS	FED. AID PROJECT	
62581				



FOR COMPLETE DRAINAGE IN THIS AREA SEE PLAN AND PROFILE SHEETS 48 AND 49

STATION EQUATION
STA 15+28.89(1) PROP. B
STA 5+58.95(1) EXIST. C AND

STATION EQUATION
STA 15+28.89(1) PROP. B
STA 15+47.08(1) EXIST. C AND

MATCH LINE
STA 10+100

MATCH LINE
STA 24+750

SHEET C-48 OF 34-C

FOR INFORMATION ONLY

NOTE:
Information from 1988-89 As-Builts to show probable location of existing catch basins collecting bridge drainage. Field verify location with Engineer. Clean all catch basins receiving drainage from SB viaduct.

BOWMAN, BARRETT & ASSOCIATES INC.
CONSULTING ENGINEERS
Chicago, Illinois
312.228.0100
www.bbainc.com

REVISIONS	
NAME	DATE

ILLINOIS DEPARTMENT OF TRANSPORTATION
F.A.I. 94/90 (DAN RYAN EXPRESSWAY)
SB DAN RYAN ELEVATED BRIDGE
REPAIR FROM 15TH TO 28TH STREETS
EXISTING DRAINAGE SYSTEM
DETAILS

SCALE: NTS
DATE: 4/14/2006

DRAWN BY: BDC
CHECKED BY: BLU

11/14/2006 10:25:44 AM