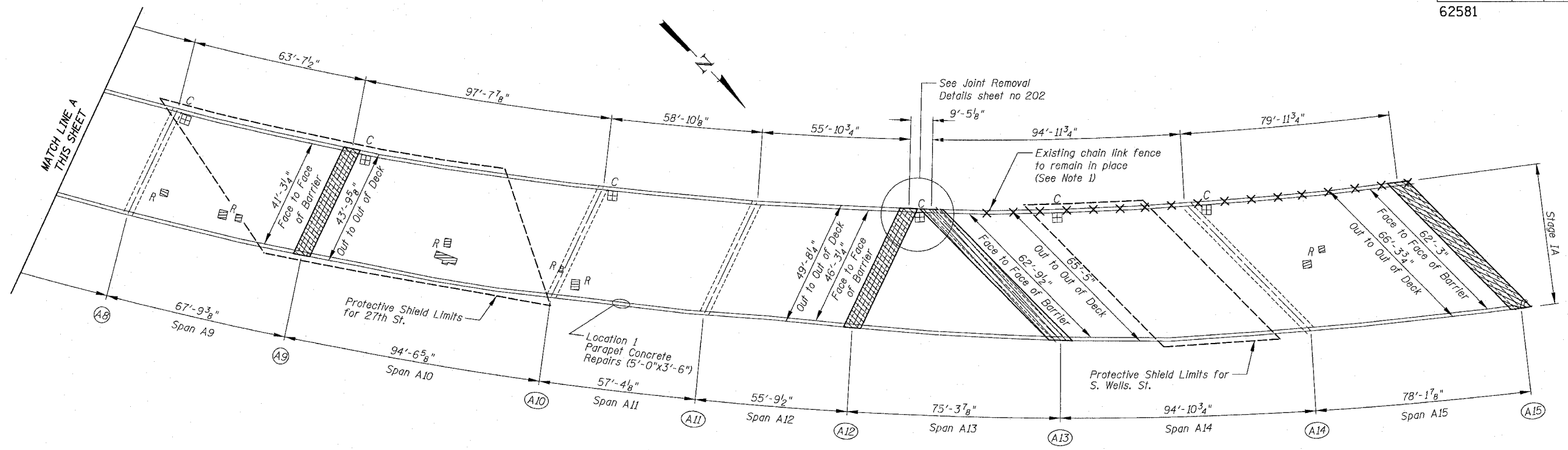


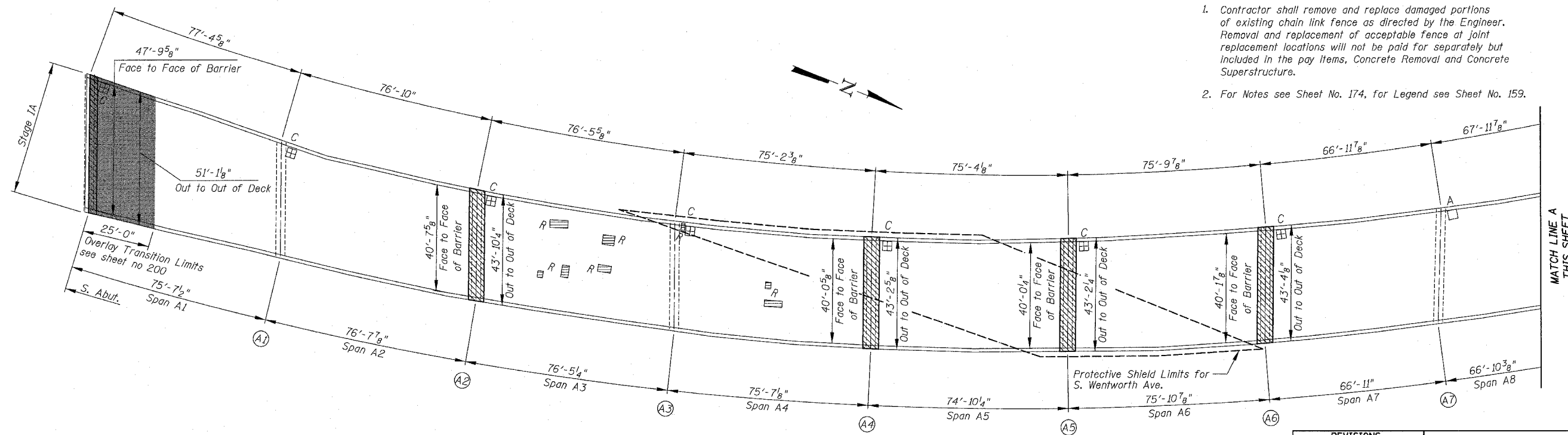
F.A.I.	SECTION	COUNTY	TOTAL SHEETS	SHEET NO.
94/90	2003-0291	COOK	344	176
STA.	TO STA.			
FED. ROAD DIST. NO.	ILLINOIS	FED. AID PROJECT		

62581



SN 016-1067 PARTIAL DECK PLAN

- Notes:
- Contractor shall remove and replace damaged portions of existing chain link fence as directed by the Engineer. Removal and replacement of acceptable fence at joint replacement locations will not be paid for separately but included in the pay items, Concrete Removal and Concrete Superstructure.
 - For Notes see Sheet No. 174, for Legend see Sheet No. 159.



SN 016-1067 PARTIAL DECK PLAN

REVISIONS	
NAME	DATE

ILLINOIS DEPARTMENT OF TRANSPORTATION
 F.A.I. 94/90 (DAN RYAN EXPRESSWAY)
 SB DAN RYAN ELEVATED BRIDGE
 REPAIR FROM 15TH TO 28TH STREETS
 PARTIAL DECK PLAN
 SN 016-1067

SCALE: 1"=20'
 DATE: 5/25/2006

DRAWN BY: BDC
 CHECKED BY: BLU

BOWMAN, BARRETT & ASSOCIATES INC.
 CONSULTING ENGINEERS
 Chicago, Illinois
 312.228.0100
 www.bbainc.com

ILLINOIS DEPARTMENT OF TRANSPORTATION
 F.A.I. 94/90 (DAN RYAN EXPRESSWAY)
 SB DAN RYAN ELEVATED BRIDGE
 REPAIR FROM 15TH TO 28TH STREETS
 PARTIAL DECK PLAN
 SN 016-1067
 DATE: 5/25/2006