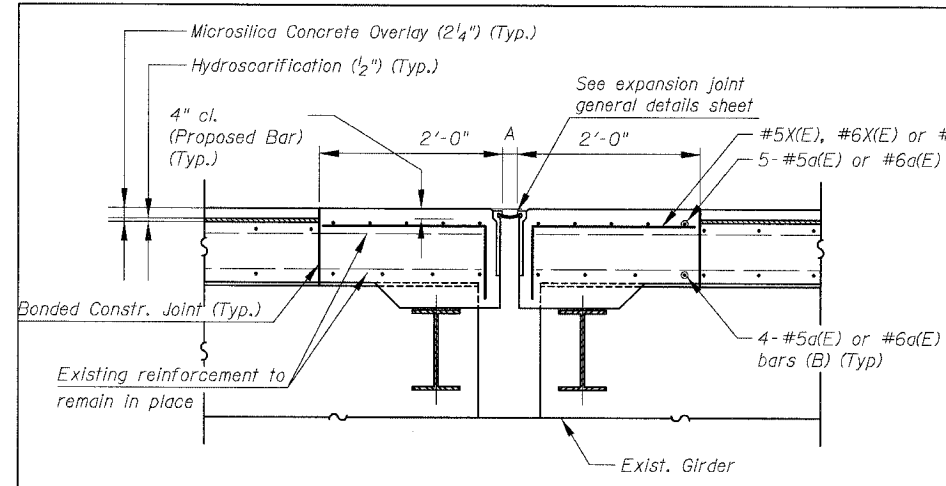
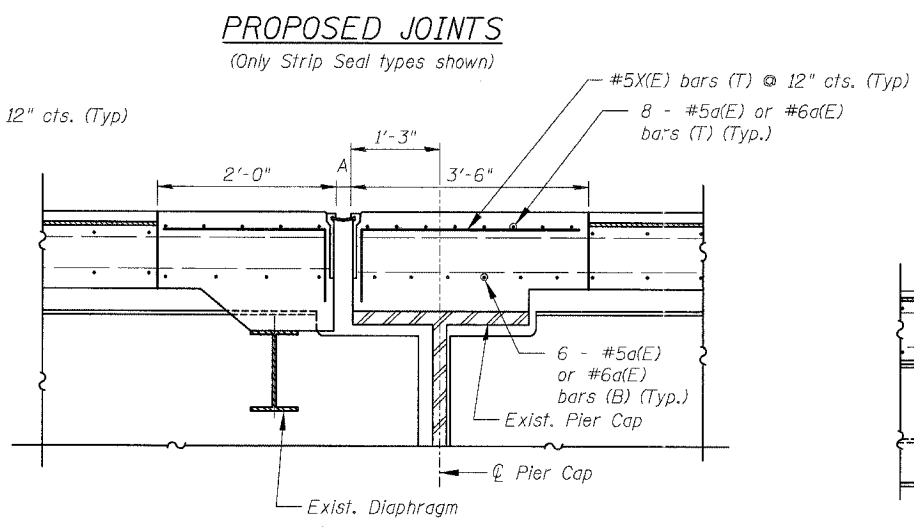


F.A.I.	SECTION	COUNTY	TOTAL SHEETS	SHEET NO.
94/90	2003-029I	COOK	344	195
STA.	TO STA.			
FED. ROAD DIST. NO.	ILLINOIS	FED. AID PROJECT		

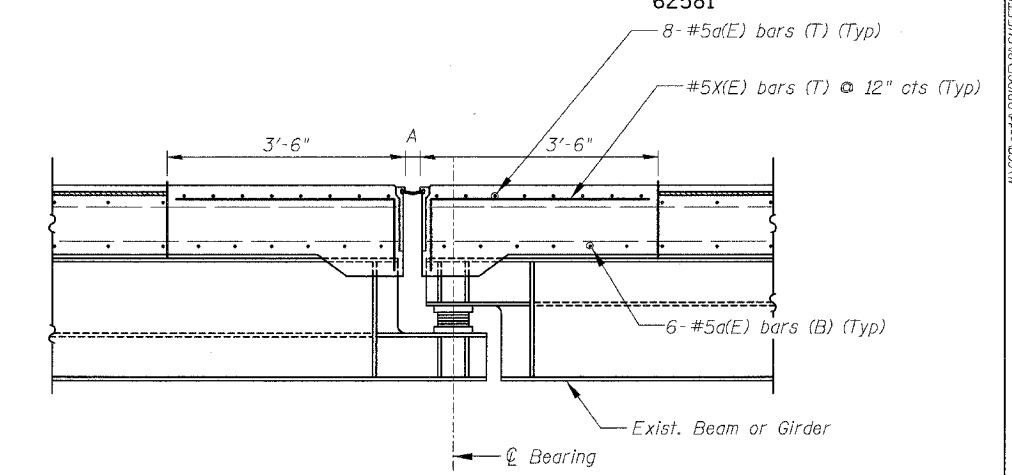
62581



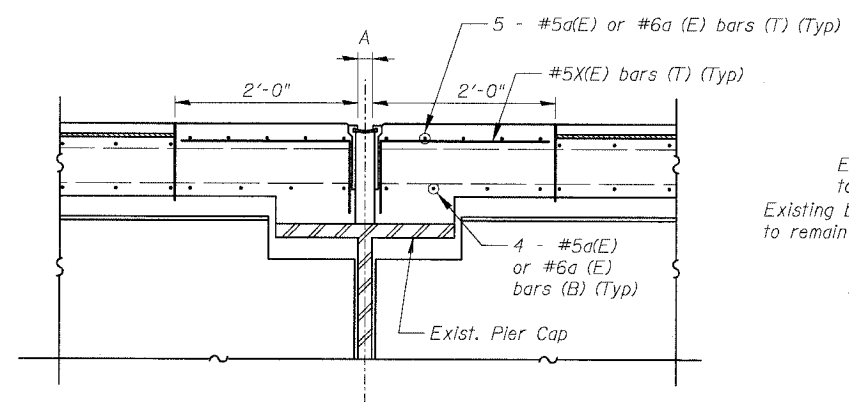
① SECTION AT PIER



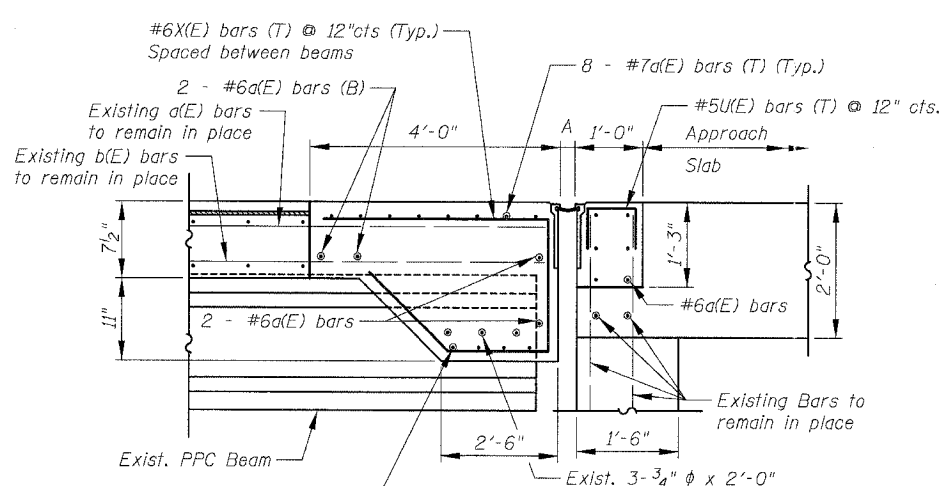
④ SECTION AT STEEL PIER CAP



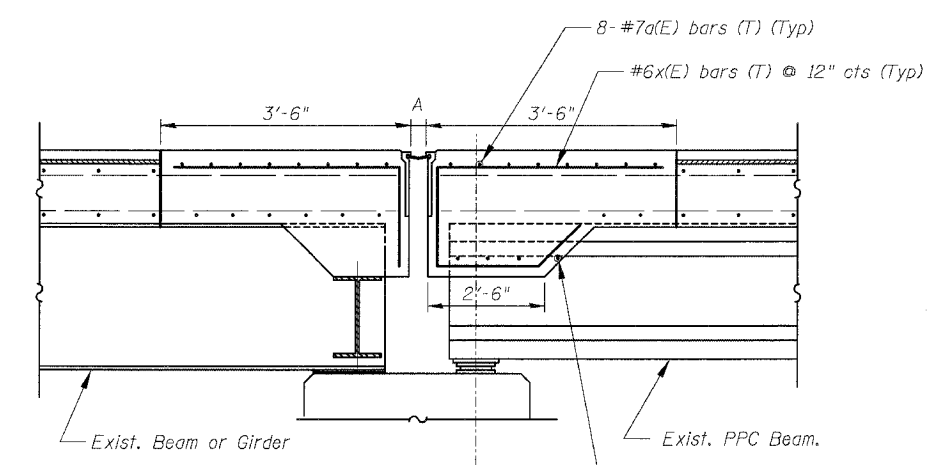
⑥ SECTION AT SUSPENDED SPAN



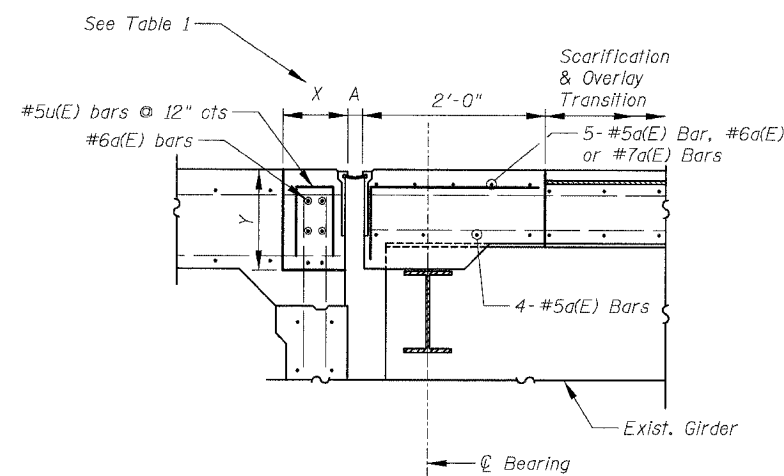
② SECTION AT STEEL PIER CAP



⑤ SECTION AT ABUTMENT



⑦ SECTION AT PIER



③ SECTION AT ABUTMENT

TABLE 1

STRUCTURE	PIER	X	Y
016-1117	S. Abut.	1'-0"	Varies from 1'-1" to 1'-1 1/4"
016-1067	S. Abut.	1'-3"	Varies from 10 1/2" to 2'-1"
016-1050 (Ramp G)	S. Abut. 689	1'-3"	Varies from 1'-8" to 1'-9"
016-1112	B17 / Abut.	1'-3 1/8"	Varies from 1'-3" to 1'-8"

BOWMAN, BARRETT & ASSOCIATES INC.
CONSULTING ENGINEERS
Chicago, Illinois
312.228.0100
www.bbandainc.com

Notes:
For bar designations, number of bars and bar lengths see sheets 203 to 211.
For joint size and location see sheets 192 and 193.
Existing Reinforcement Bars shown are to be cleaned, straightened and incorporated into new construction.
All joints between new and old concrete shall be bonded construction joints.
Reinforcement bars designated (E) shall be epoxy coated.
For Scarification and Overlay Transition Detail, see sheet no 200.
All dimensions shown are at right angle to the centerline of the Piers or Abutments.

The placement of the "X" Bars for the proposed joint shown in the details are as follows:
1. At 3'-6" Concrete Removal location all existing bars shall be replaced.
a. When existing "X" Bars are present, no additional "X" Bars shall be provided.
b. When existing "X" Bars are not present, new "X" Bars shall be provided.

ABBREVIATIONS

T - Top
B - Bottom

REVISIONS	DATE
NAME	

ILLINOIS DEPARTMENT OF TRANSPORTATION
F.A.I. 94/90 (DAN RYAN EXPRESSWAY)
SB DAN RYAN ELEVATED BRIDGE
REPAIR FROM 15TH TO 28TH STREETS
TYPICAL SECTIONS (DESIGNATION 1)
PROPOSED JOINTS
SCALE: NTS
DATE: 5/25/2006
DRAWN BY: BDC
CHECKED BY: BLU