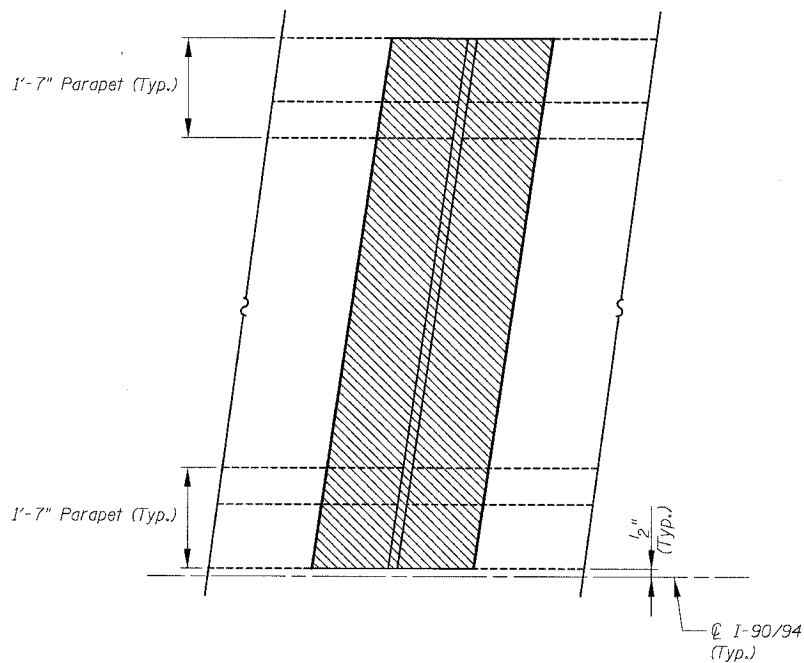
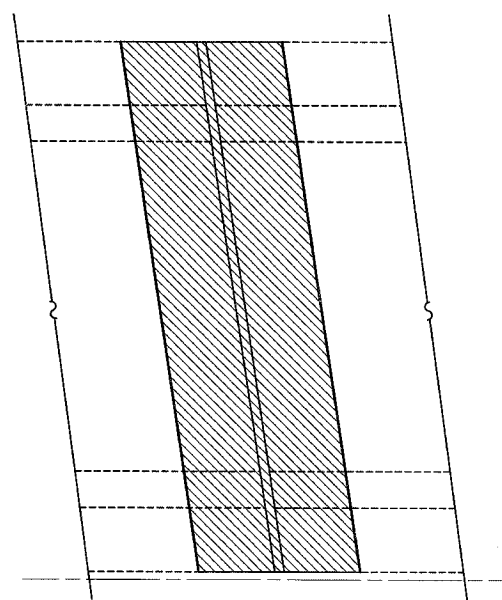


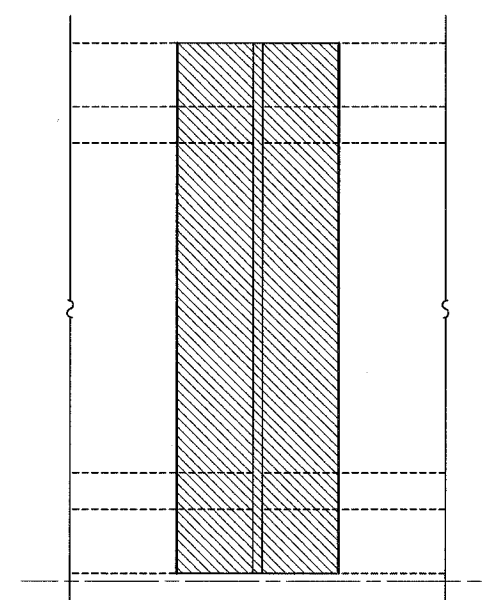
F.A.I.	SECTION	COUNTY	TOTAL SHEETS	SHEET NO.
94/90	2003-029I	COOK	344	196
STA.	TO STA.			
FED. ROAD DIST. NO.	ILLINOIS	FED. AID PROJECT		
62581				



**EXISTING PARTIAL PLAN
(SKEWED LEFT FORWARD)**

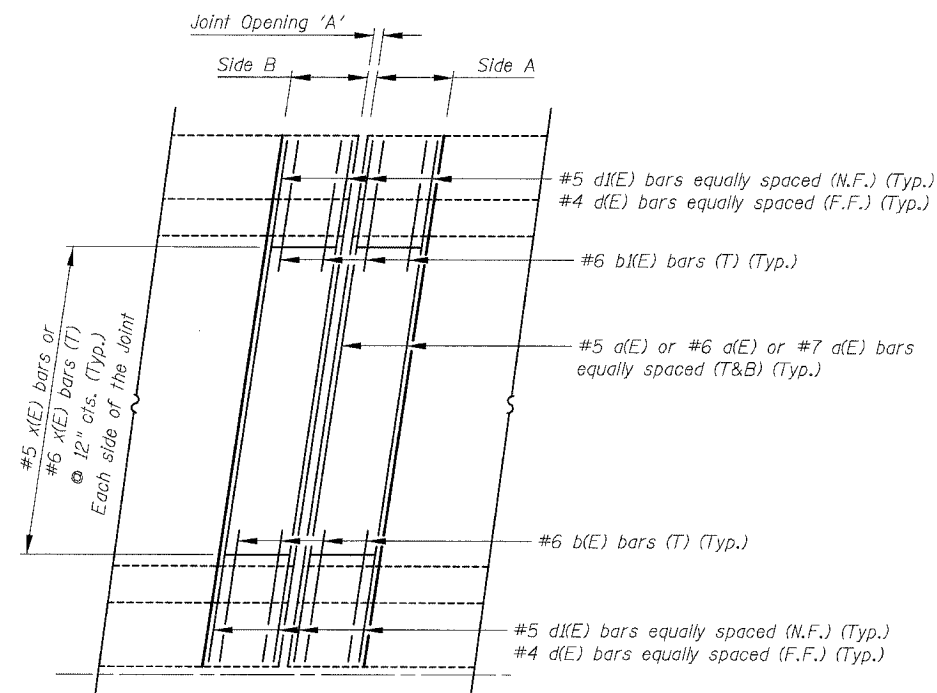


**EXISTING PARTIAL PLAN
(SKEWED RIGHT FORWARD)**

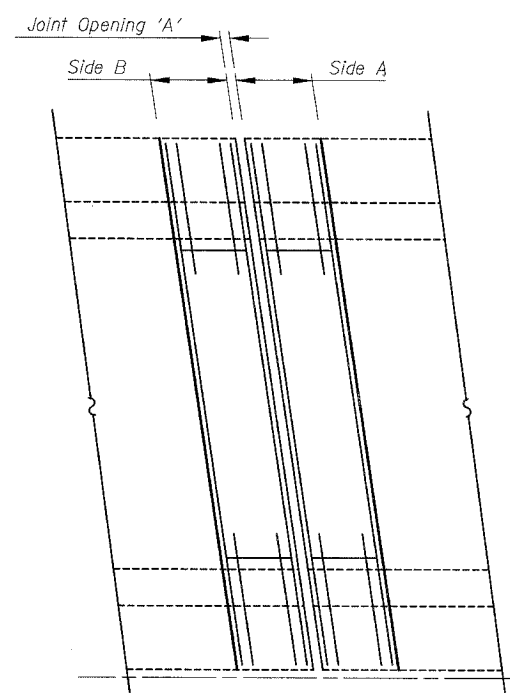


**EXISTING PARTIAL PLAN
(NO SKEW)**

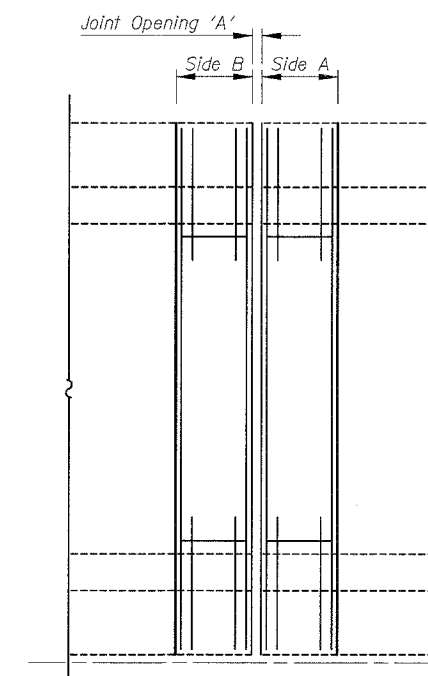
- Notes:
1. For number of bars required per joint see sheets 203 to 210 for "Reinforcement Bar Schedule".
 2. Reinforcement bars designated (E) shall be epoxy coated.
 3. The left forward and right forward are identified as per skew angle from the perpendicular line to the ϕ of the roadway.
 4. Bend bars in the field as required.
 5. Joint Opening 'A' is measured perpendicular to the joint.
 6. Side A designation is always upstation (northbound) from side B.



**(A) PROPOSED PARTIAL PLAN
(NON STAGED CONSTRUCTION)
(SKEWED LEFT FORWARD)**



**(B) PROPOSED PARTIAL PLAN
(NON STAGED CONSTRUCTION)
(SKEWED RIGHT FORWARD)**



**(C) PROPOSED PARTIAL PLAN
(NON STAGED CONSTRUCTION)
(NO SKEW)**

- LEGEND**
- Concrete Removal / Joint Reconstruction
 - Designation 2
Staged and Non Staged Construction

- ABBREVIATION**
- N.F. Near Face
 - F.F. Far Face

BOWMAN, BARRETT & ASSOCIATES INC.
CONSULTING ENGINEERS
Chicago, Illinois
312.228.0100
www.bbainc.com



REVISIONS	
NAME	DATE

ILLINOIS DEPARTMENT OF TRANSPORTATION
F.A.I. 94/90 (DAN RYAN EXPRESSWAY)
SB DAN RYAN ELEVATED BRIDGE
REPAIR FROM 15TH TO 28TH STREETS
TYPICAL PARTIAL PLAN (DESIGNATION 2)
AT NON STAGED ROADWAYS
SCALE: NTS
DATE: 5/25/2006
DRAWN BY: BDC
CHECKED BY: BLU

N:\660\0000\BRIDGE\2\1\5\60_21\T\PP0491 12/26/02 PM 5/25/2006