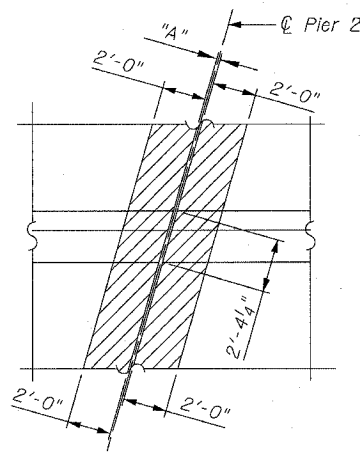
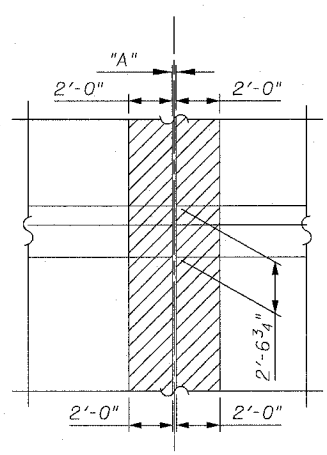


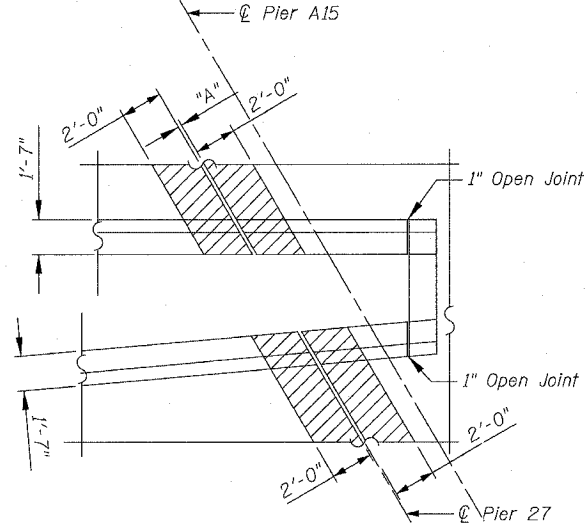
**CLOSURE WALL DETAIL**  
**SN 016-1115 PIER 21**  
 (NTS)



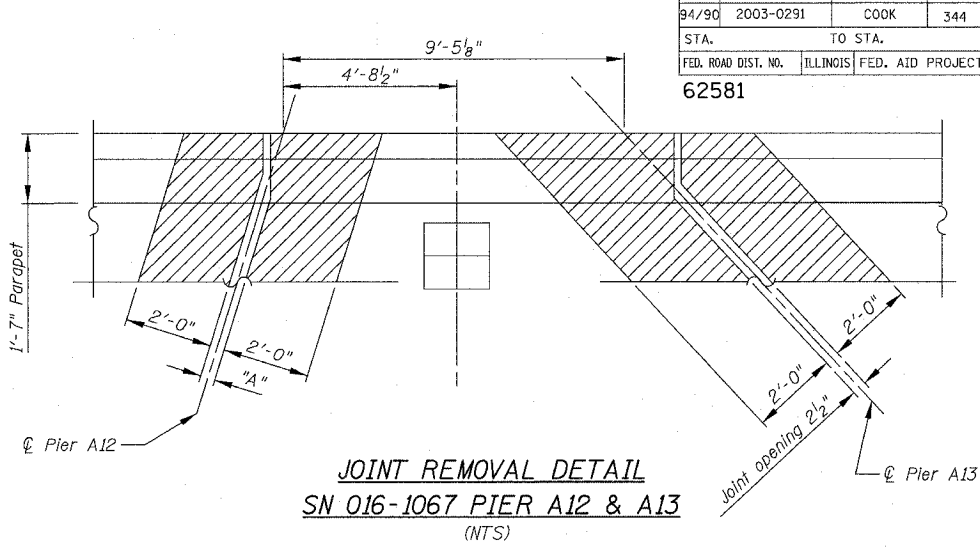
**MEDIAN DETAIL**  
**SN 016-1115 PIER 22**  
 (NTS)



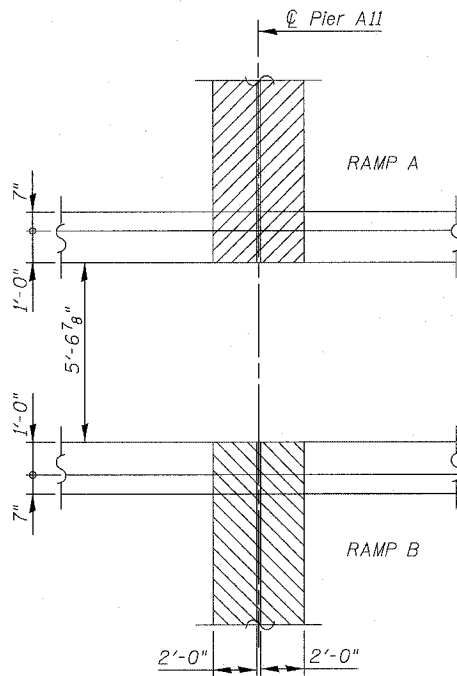
**MEDIAN DETAIL**  
**SN 016-1113 PIER 3**  
 (NTS)



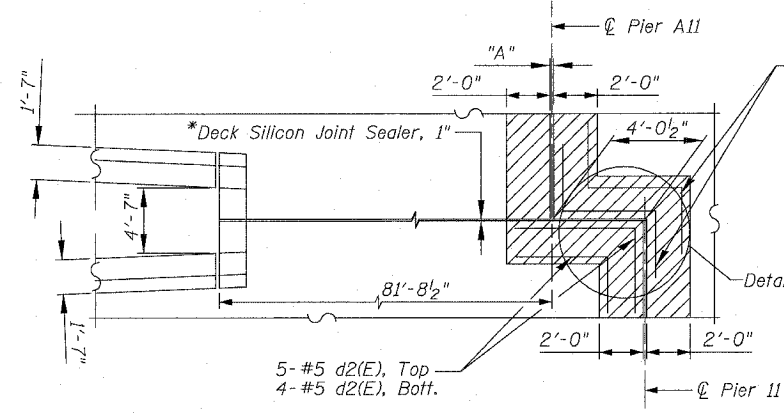
**CLOSURE WALL DETAIL**  
**SN 016-1112 PIER 27**  
 (NTS)



**JOINT REMOVAL DETAIL**  
**SN 016-1067 PIER A12 & A13**  
 (NTS)

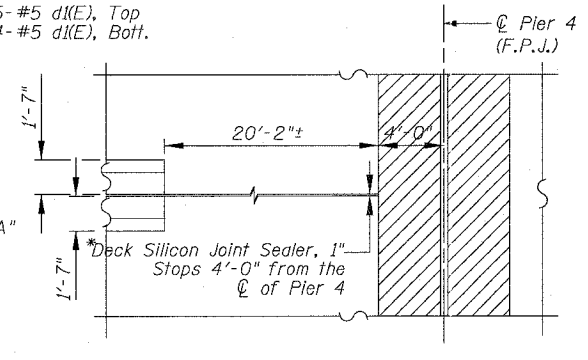


**MEDIAN DETAIL**  
**SN 016-1113 (RAMP A)**  
**PIER A10**  
 (NTS)

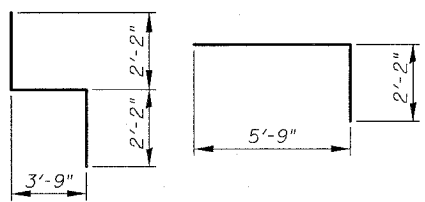


**JOINT DETAIL**  
**SN 016-1113 PIERS 11 & A11**  
 (NTS)

\*Existing 1" Neoprene Compressive Seal to be removed and replaced with 1" Silicone Joint Sealer.



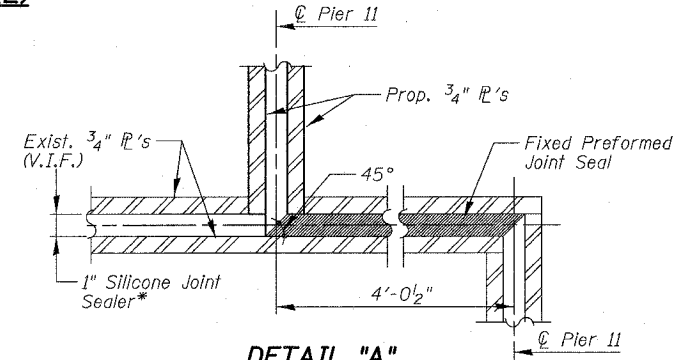
**JOINT REMOVAL DETAIL**  
**SN 016-1110 PIER 4**  
 (NTS)



**BAR d1(E)**      **BAR d2(E)**

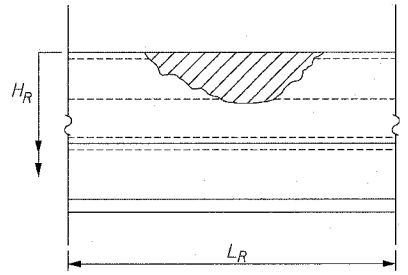
**PIERS 11 & A11 (SN 016-1113)**  
**BILL OF MATERIAL**

BAR	NO.	SIZE	LENGTH	SHAPE
d1(E)	9	#5	8'-1"	U
d2(E)	9	#5	7'-11"	Rect
Item			Unit	Qty.
Reinforcement Bars, Epoxy Coated			Pound	150



**DETAIL "A"**

- Notes:
- At the 4'-0 1/2" section cut the Preformed Joint Seal at 45° and vulcanize in the field.
  - The cost for the 4'-0 1/2" section shall be incidental with the total cost of the fixed joints.
  - The joints manufacturer should be consulted to ensure that a proper bond will be provided between the Silicone Joint and Fixed Joint.



**PARAPET REPAIRS - DETAIL "B"**  
 (Front face of Parapet)

**PARAPET REPAIR DIMENSIONS AND BILL OF MATERIALS**

	Unit	SN 016-1067	SN 016-1062	SN 016-0137
LR	Ft	5'-0"	8'-0"	6'-0"
HR	Ft	3'-6"	3'-6"	3'-6"
Concrete Removal	Cu. Yd.	0.70	1.1	0.82
Concrete Superstructure	Cu. Yd.	0.70	1.1	0.82

**NOTE:**

- Cut Bars in the field to fit as required.

REVISIONS	NAME	DATE

ILLINOIS DEPARTMENT OF TRANSPORTATION  
 F.A.I. 94/90 (DAN RYAN EXPRESSWAY)  
 SB DAN RYAN ELEVATED BRIDGE  
 REPAIR FROM 15TH TO 28TH STREETS  
 PARAPET REPAIR AND  
 JOINT REMOVAL DETAILS

SCALE: NTS  
 DATE: 5/25/2006

DRAWN BY: BDC  
 CHECKED BY: BLU