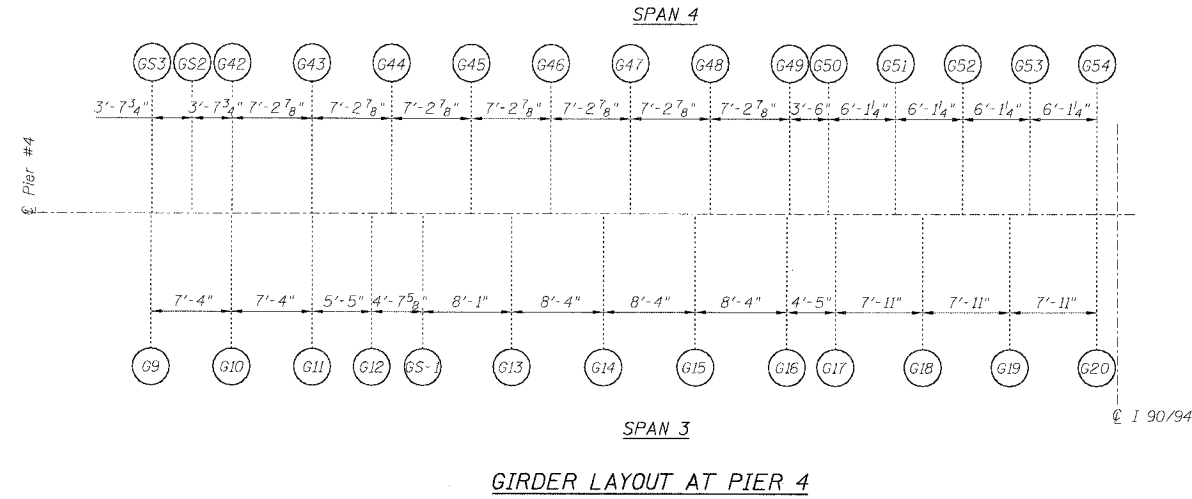


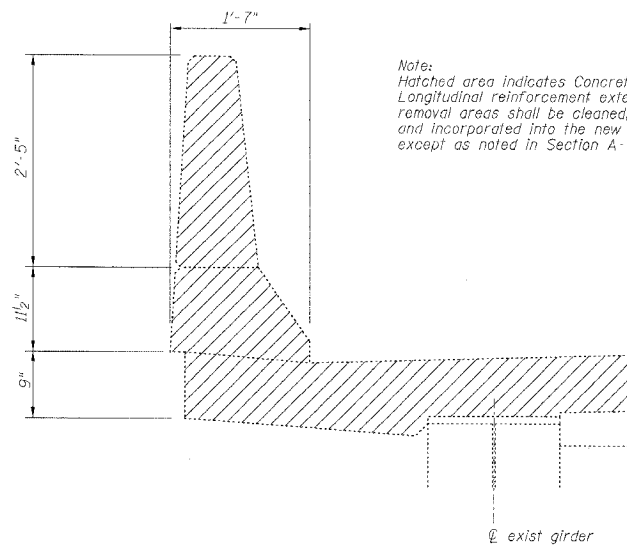
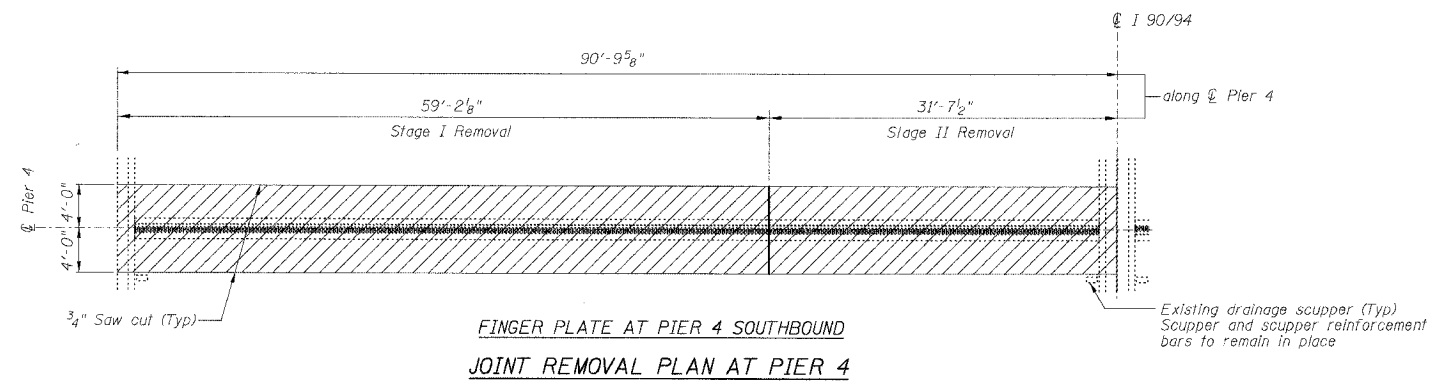
STATE OF ILLINOIS  
DEPARTMENT OF TRANSPORTATION

ROUTE NO.	SECTION	COUNTY	TOTAL SHEETS	SHEET NO.
FAI 90/94	*	COOK	344	213
FED. ROAD DIST. NO.	ILLINOIS	PROJECT		
* 2003-0291				
CONTRACT #62581				

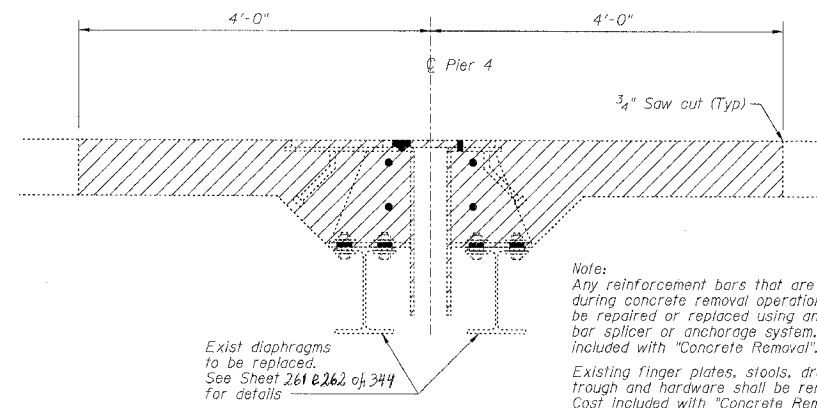
Sheet No 2  
of 8 Sheets



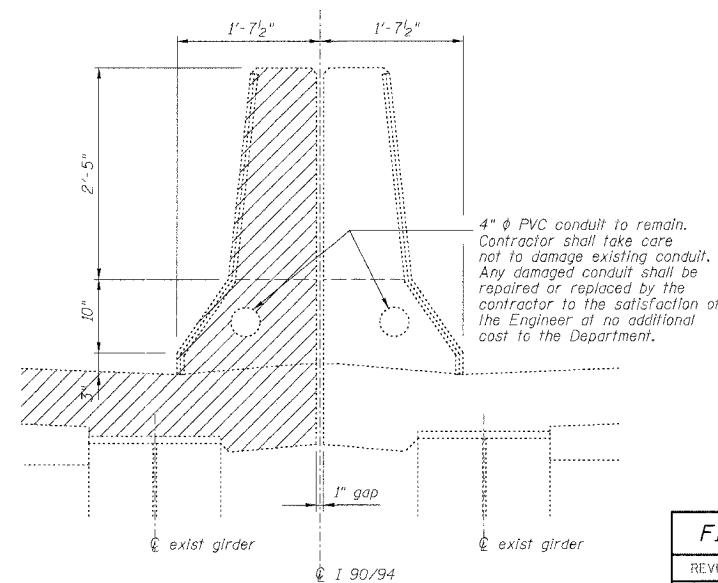
Note:  
All dimensions on girder layout  
are given along centerline of bearing.



Note:  
Hatched area indicates Concrete Removal.  
Longitudinal reinforcement extending into  
removal areas shall be cleaned, straightened  
and incorporated into the new construction  
except as noted in Section A-A on Sheet 4



Note:  
Any reinforcement bars that are damaged  
during concrete removal operations shall  
be repaired or replaced using an approved  
bar splicer or anchorage system. Cost  
included with "Concrete Removal".  
Existing finger plates, stools, drainage  
trough and hardware shall be removed.  
Cost included with "Concrete Removal".



4"  $\phi$  PVC conduit to remain.  
Contractor shall take care  
not to damage existing conduit.  
Any damaged conduit shall be  
repaired or replaced by the  
contractor to the satisfaction of  
the Engineer at no additional  
cost to the Department.

PIER NO. 4

**FINGER PLATE EXPANSION JOINT REMOVAL DETAILS**

REVISIONS		STATE OF ILLINOIS DEPARTMENT OF TRANSPORTATION DIVISION OF HIGHWAYS		DRAWN BY: RLK DATE: 5/03
NO.	DATE	INITIALS		CHECKED BY: SDS DATE: 5/03
1				BOOK NUMBER
2				PROJECT NO.
3				4222-3
4				SHEET NO.
5				
6				
7				
8				
9				
10				

FAI RTE 90/94 SB DAN RYAN EXPRESSWAY  
SN 016-1110 (SOUTHBOUND)  
SEC 2003-0291 IL COOK COUNTY

HOMER L. CHASTAIN & ASSOCIATES  
CONSULTING ENGINEERS  
8699 W. BRYN MAWR AVENUE  
SUITE 204  
CHICAGO, ILLINOIS 60618  
312-714-0900  
FAX: 312-714-0900