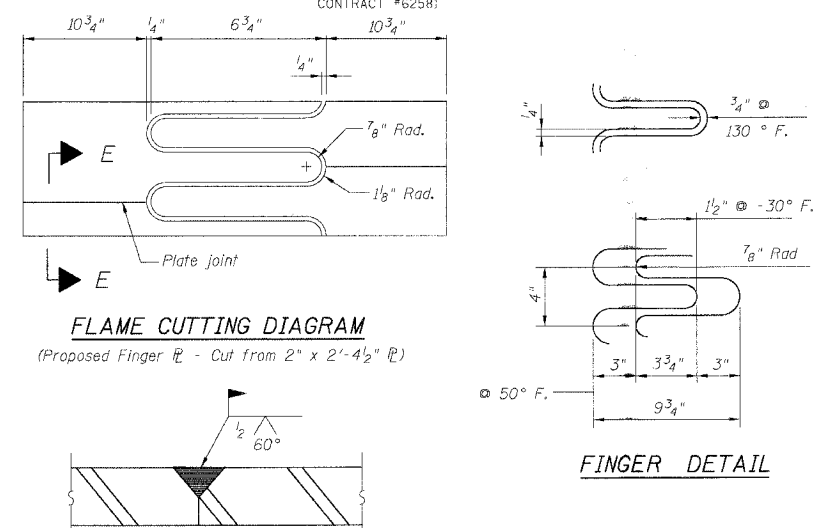
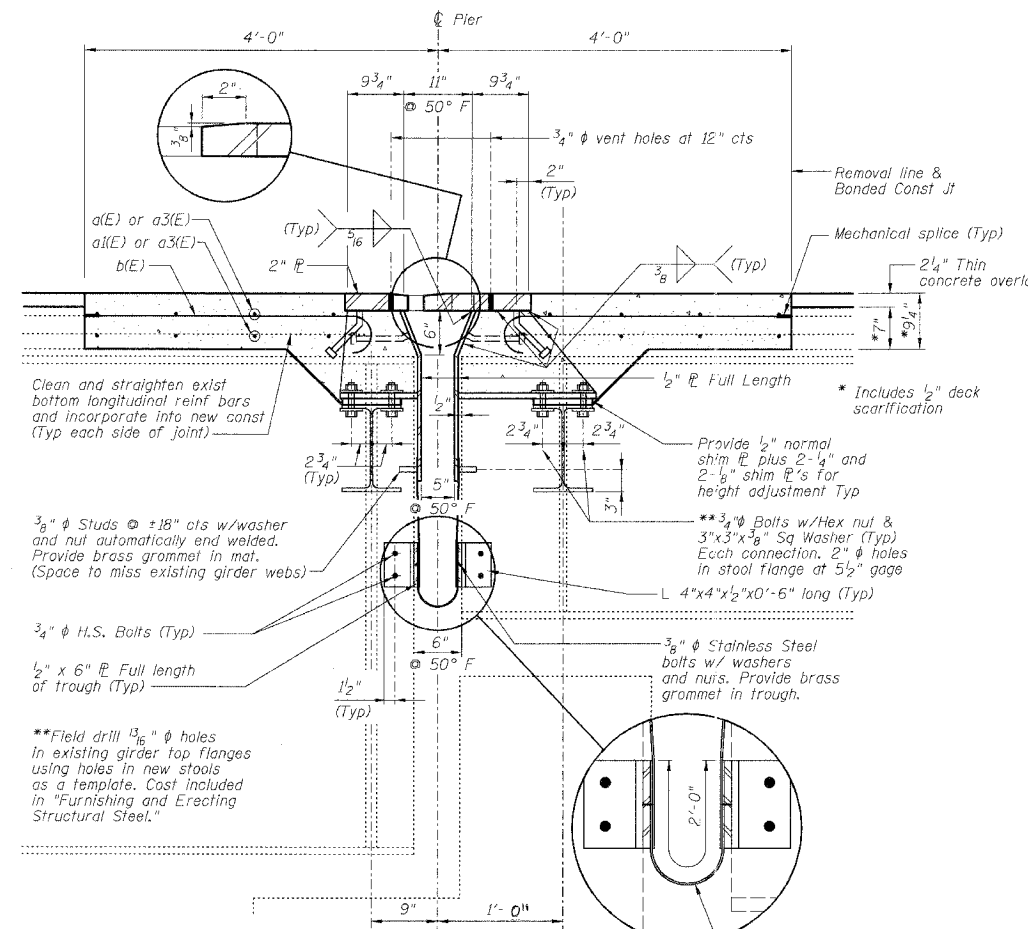
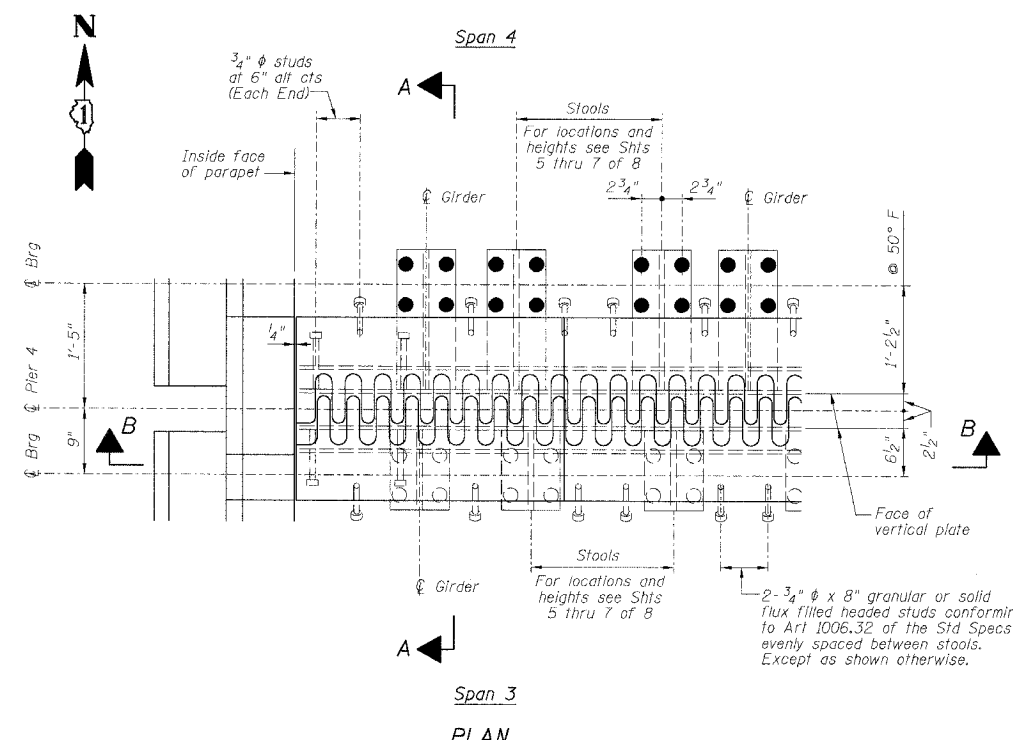


STATE OF ILLINOIS
DEPARTMENT OF TRANSPORTATION

ROUTE NO.	SECTION	COUNTY	TOTAL SHEETS	SHEET NO.
FAI 90/94		COOK	344	215
FED/ADJ DIST. NO.		LANDS	PROJECT	

Sheet No 4
of 8 Sheets

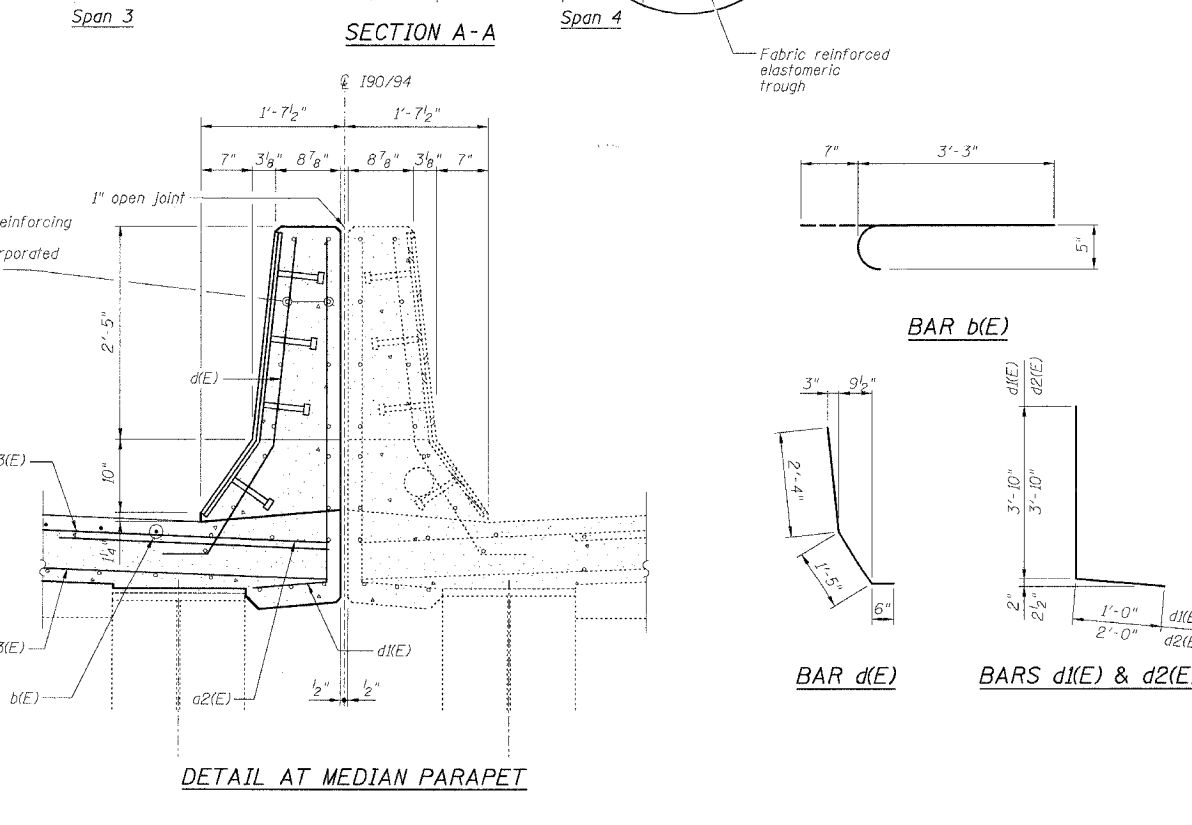
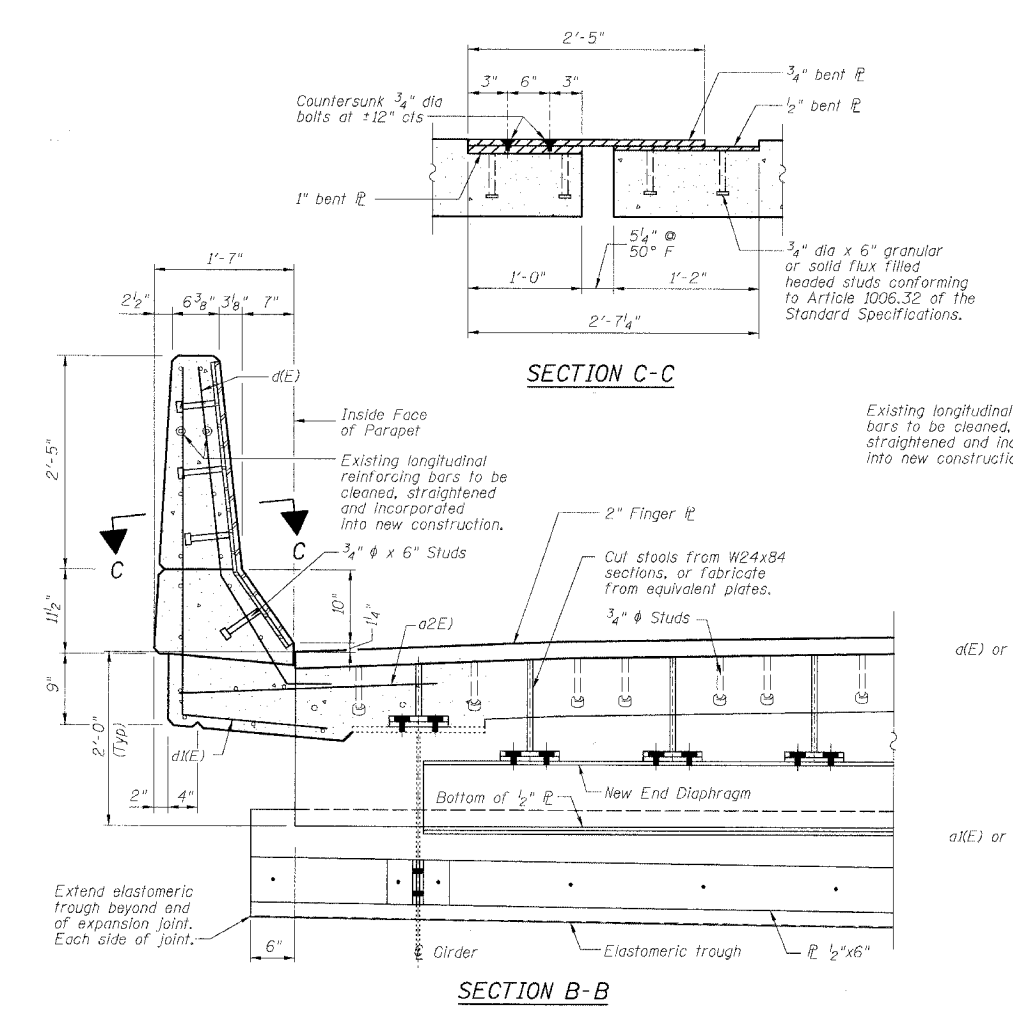
2003-029
CONTRACT #62581



BILL OF MATERIAL

Bar	No.	Size	Length	Shape	
a(E)	28	#5	30'-6"	—	
a1(E)	30	#5	20'-9"	—	
a2(E)	16	#6	4'-6"	—	
a3(E)	24	#5	31'-10"	—	
b(E)	178	#5	3'-10"	C	
d(E)	16	#5	4'-3"	L	
d1(E)	8	#5	4'-10"	—	
d2(E)	8	#5	5'-10"	—	
Reinforcement Bars, Epoxy Coated				Pound	3320
Concrete Removal				Cu Yd	24.0
Concrete Superstructure				Cu Yd	27.8
Mechanical Splice				Each	178
Bar Splicers				Each	24

Reinforcing bars designated (E) shall be epoxy coated.



- NOTES**
- The Contractor shall bolt the Stools of the Fingerplate Joint Assembly to the top of New End Diaphragms and to the top of the existing girders, as shown in Section A-A of this drawing.
 - Stainless steel bolts, washers and nuts shall meet the requirements of ASTM A193.
 - The furnishing and installation of all necessary hardware, stainless steel bolts, studs and washers, plates and angles shall be included with "Furnishing and Erecting Structural Steel".
 - Expansion Length = 348.5'

PIER NO. 4

FINGER PLATE EXPANSION JOINT DETAILS

REVISIONS	STATE OF ILLINOIS DEPARTMENT OF TRANSPORTATION DIVISION OF HIGHWAYS	DRAWN BY DATE RLK 5/03
1	FAI RTE 90/94 SB	CHECKED BY DATE SDS 5/03
2	DAN RYAN EXPRESSWAY	BOOK NUMBER
3	SN 016-1110 (SOUTHBOUND)	PROJECT NO. 4222-3
4	SEC 2003-029 I	COOK COUNTY
5		
6		
7		
8		
9		
10		

CHASTAIN & ASSOCIATES
CONSULTING ENGINEERS
312 714-0050
FAX 312-714-0055