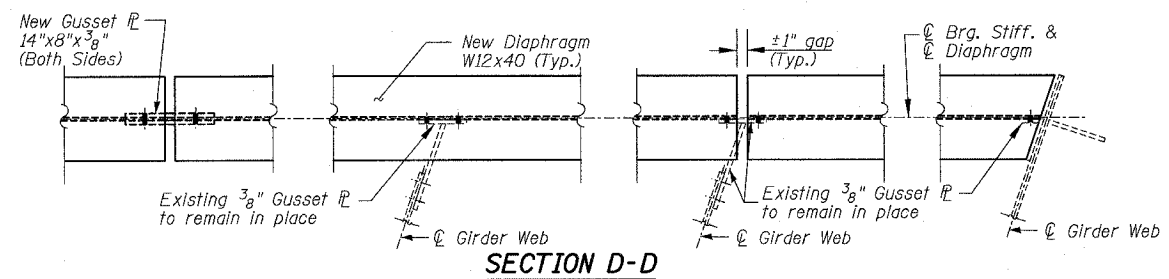
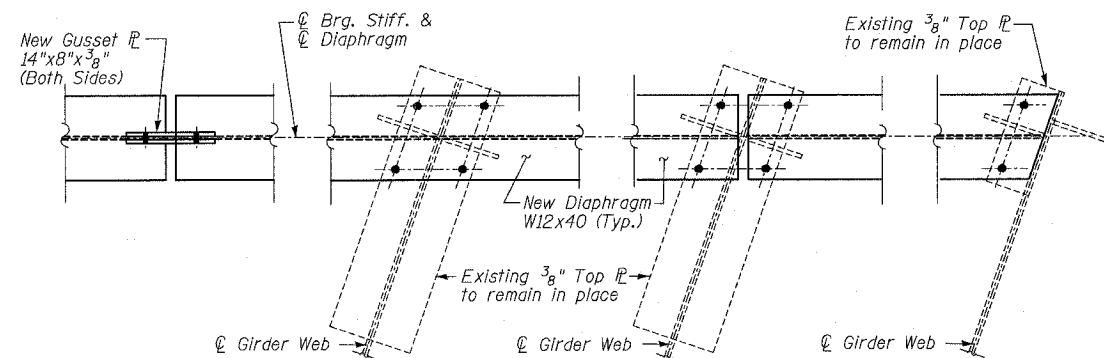


|                     |           |                  |              |           |
|---------------------|-----------|------------------|--------------|-----------|
| F.A.I.              | SECTION   | COUNTY           | TOTAL SHEETS | SHEET NO. |
| 94/90               | 2003-0291 | COOK             | 344          | 272       |
| STA.                |           | TO STA.          |              |           |
| FED. ROAD DIST. NO. | ILLINOIS  | FED. AID PROJECT |              |           |

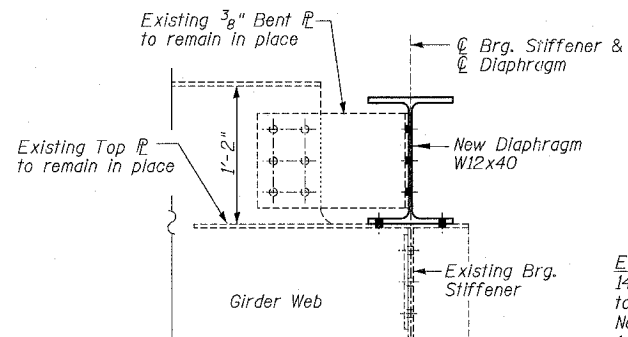
62581



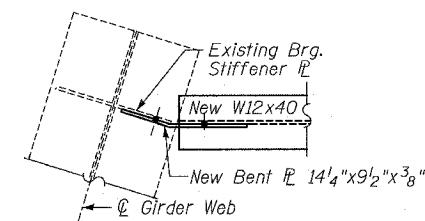
**SECTION D-D**



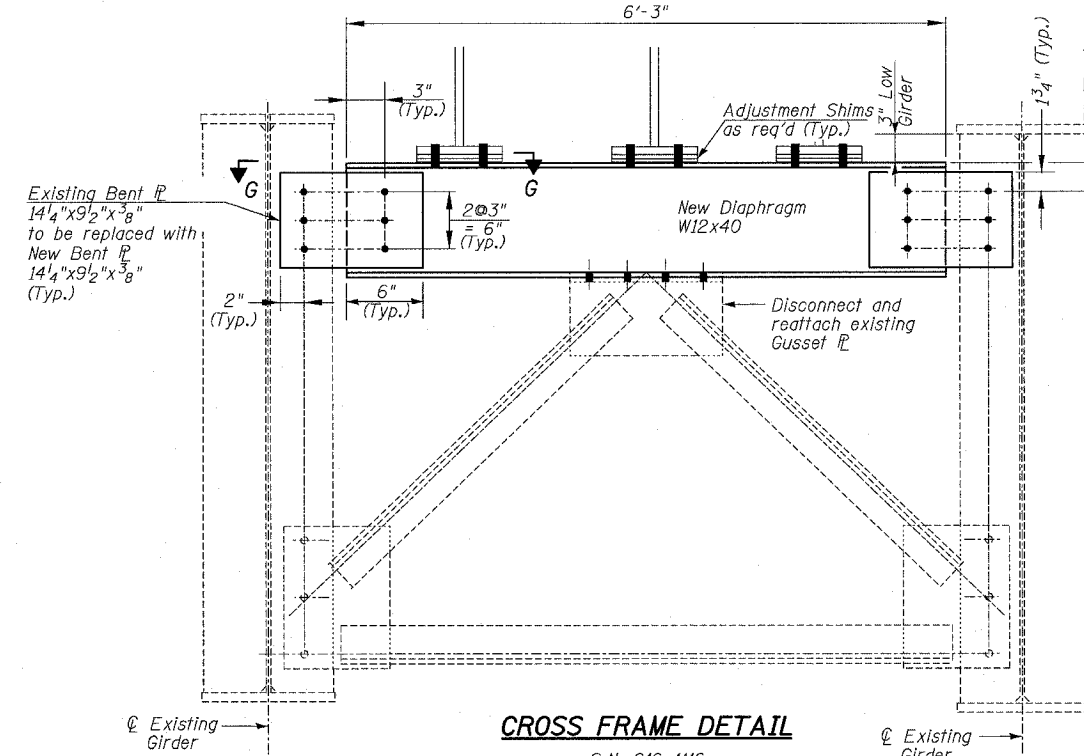
**SECTION E-E**



**SECTION F-F**



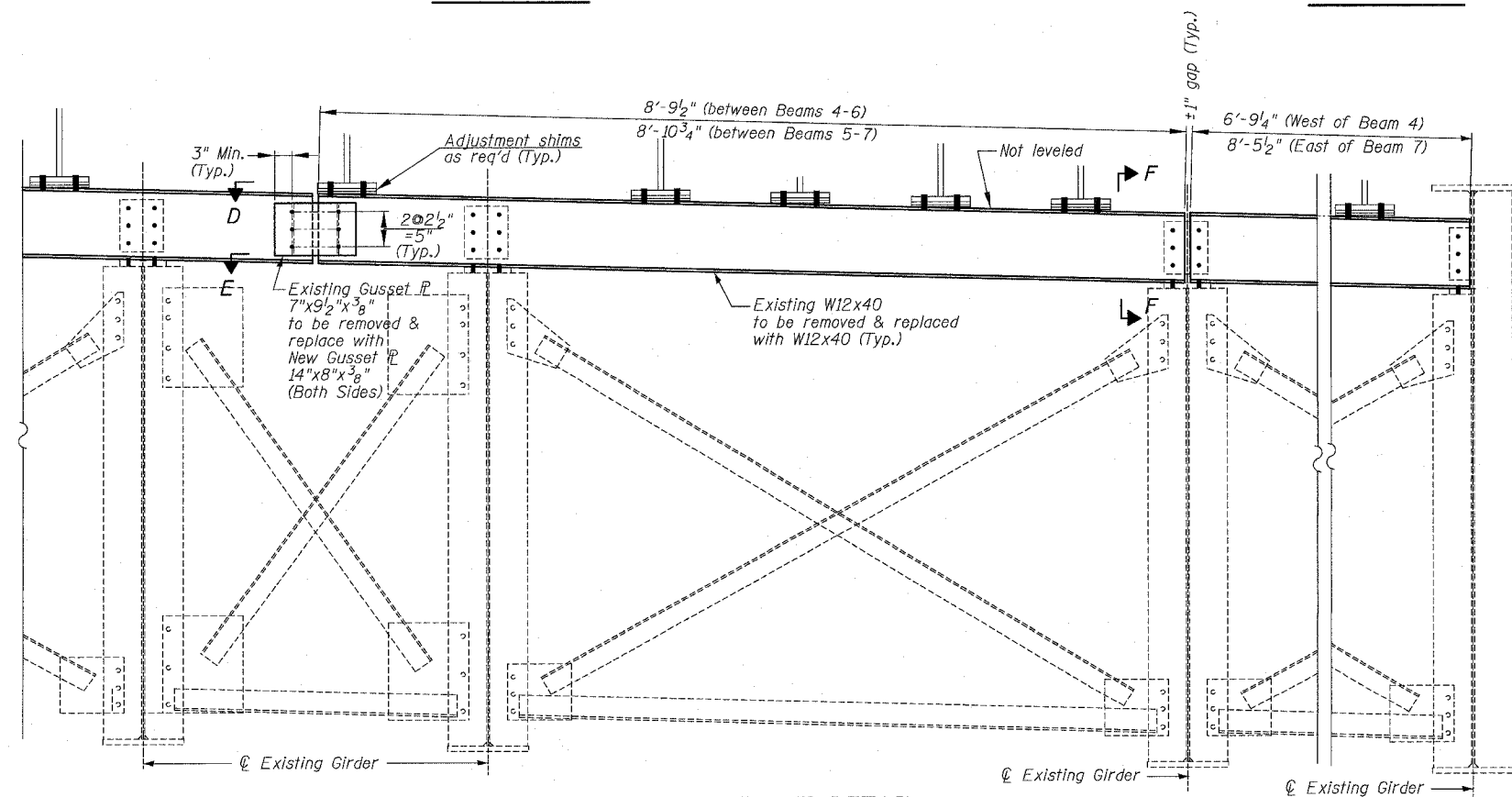
**Section G-G**



**CROSS FRAME DETAIL**

S.N. 016-1116

816-1 1 REQ'D



**CROSS FRAME DETAIL**

S.N. 016-1116

CF 7 REQ'D  
809-2 1 REQ'D

BOWMAN, BARRETT & ASSOCIATES INC.  
CONSULTING ENGINEERS  
Chicago, Illinois  
312.228.0100  
www.bbandainc.com



| REVISIONS |      |
|-----------|------|
| NAME      | DATE |
|           |      |
|           |      |
|           |      |
|           |      |
|           |      |
|           |      |

ILLINOIS DEPARTMENT OF TRANSPORTATION  
F.A.I. 94/90 (DAN RYAN EXPRESSWAY)  
SB DAN RYAN ELEVATED BRIDGE  
REPAIR FROM 15TH TO 28TH STREETS  
DIAPHRAGM REPLACEMENT DETAILS  
PIER 26, SN 016-1117

SCALE: NTS  
DATE: 5/25/2006

DRAWN BY: BDC  
CHECKED BY: IYL

W 660 0000 BRIDGE SHEETS 660.21 016-1117-F.F. 1/06

4/16/06 4:46:34 PM