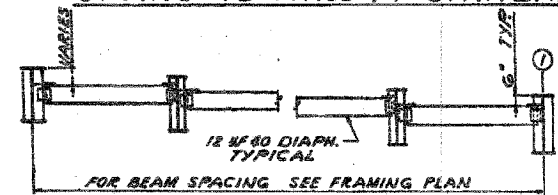
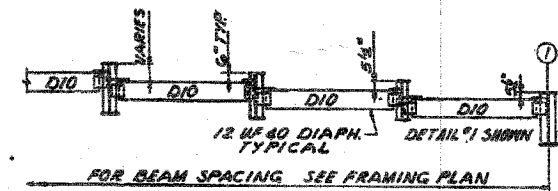


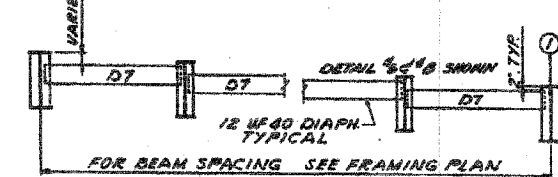
TYPICAL PARTIAL ELEVATION
SPAN #14 SHOWN SPANS #8 THRU #11.
SPANS #15 THRU #19 SIMILAR



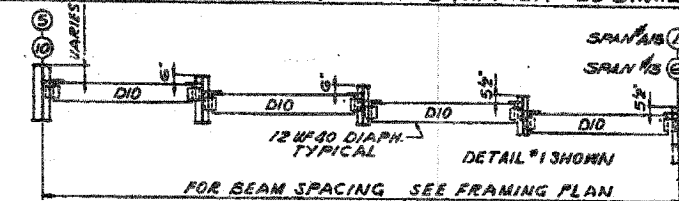
TYPICAL PARTIAL ELEVATION
SPAN #A14 SHOWN SPANS #A1 THRU #A3, #A7 THRU #A12
SPANS #A15 THRU #A17 & SPANS #H1 THRU #H14 SIMILAR.



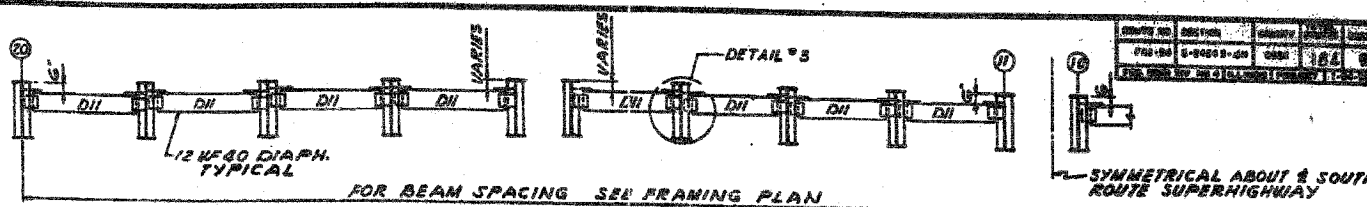
TYPICAL PARTIAL ELEVATION
SPAN #12 AT PIER #13 SHOWN
SPAN #H6 AT PIER #H6 SIMILAR
SCALE: 1/2" = 1'-0"



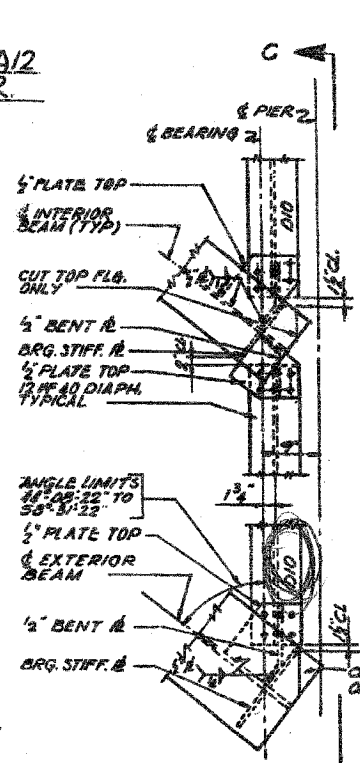
TYPICAL PARTIAL ELEVATION
SPAN #6 AT PIER #6 SHOWN SPAN #7 AT PIER #7
SPAN #A4 THRU #A6 AT PIER #A3 THRU #A6
SPAN #H1 AT SOUTH ABUT. & SPAN #24 AT PIER #23 SIMILAR



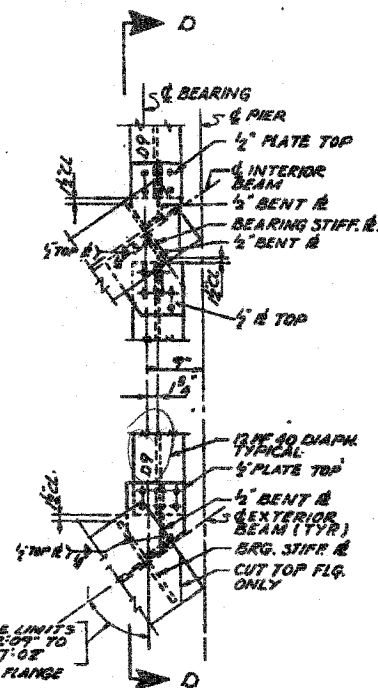
TYPICAL ELEVATION
SPAN #13 AT PIER #13 SHOWN
SPAN #A3 AT PIER #A3 SIMILAR



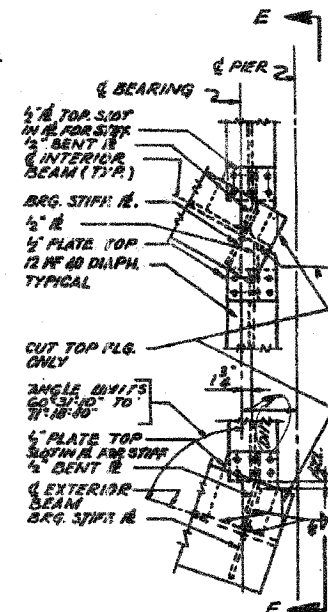
HALF ELEVATION
SPAN #26 AT PIER #26



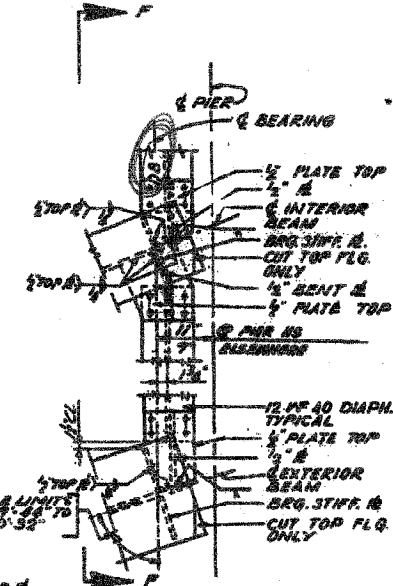
DETAIL #1
SCALE: 1" = 1'-0"



DETAIL #2
SCALE: 1" = 1'-0"

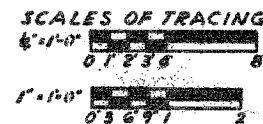


DETAIL #3
SCALE: 1" = 1'-0"



DETAIL #4
SCALE: 1" = 1'-0"

NOTES:
WORK THIS SHEET WITH SHEET 58
WORK THIS SHEET WITH FRAMING
PLAN SHEET #1 TO #2



ALFRED BENECH & ASSOCIATES CONSULTING ENGINEERS
20 SOUTH WABASH AVENUE CHICAGO, ILLINOIS

CITY OF CHICAGO
DEPARTMENT OF PUBLIC WORKS
BUREAU OF ENGINEERING
SOUTH ROUTE SUPERHIGHWAY
ELEVATED HIGHWAY
28TH PLACE TO STEWART AVE.
SECTION 2-2454-7-01
END DIAPHRAGM DETAILS

SHEET NO. 57 OF 124 SHEETS DATE: MARCH, 1961

REVISIONS	
NAME	DATE

ILLINOIS DEPARTMENT OF TRANSPORTATION
F.A.I. 94/90 (DAN RYAN EXPRESSWAY)
SB DAN RYAN ELEVATED BRIDGE
REPAIR FROM 15TH TO 28TH STREETS
EXISTING PLAN INFORMATION
SN 016-1117 & 016-1067

SCALE: NTS DRAWN BY: MTR
DATE: 5/25/2006 CHECKED BY: BLU

FOR INFORMATION ONLY

BOWMAN, BARRETT & ASSOCIATES INC.
CONSULTING ENGINEERS
Chicago, Illinois
312.228.0100
www.bbainc.com

4/23/2006