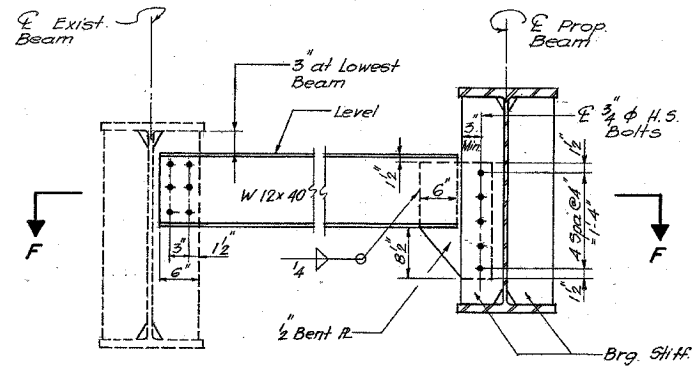
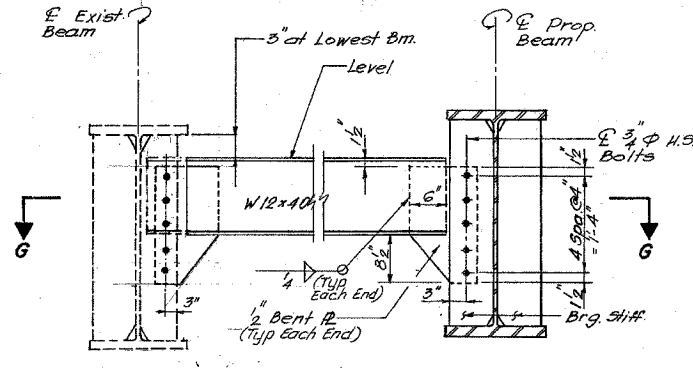


FEDERAL AID DISTRICT NO.	SECTION	COUNTY	TOTAL SHEETS	SHEET NO.
90/94	*	COOK	109	35
STA.	TO STA.			
FED. ROAD DIST. NO.	ILLINOIS	FED. AID PROJECT		
SECTION 1985-082 R				

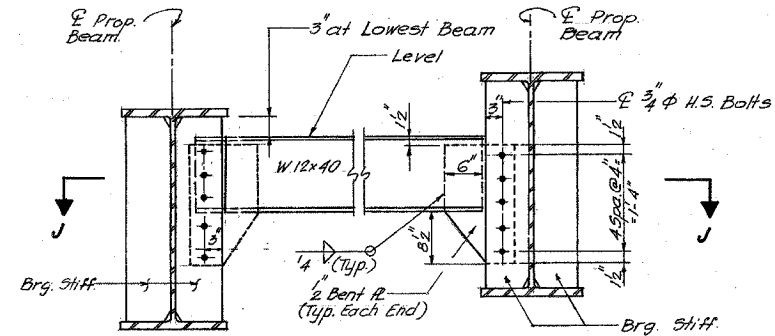
F.A.I.	SECTION	COUNTY	TOTAL SHEETS	SHEET NO.
94/90	2003-0291	COOK	344	293
STA.	TO STA.			
FED. ROAD DIST. NO.	ILLINOIS	FED. AID PROJECT		
62581				



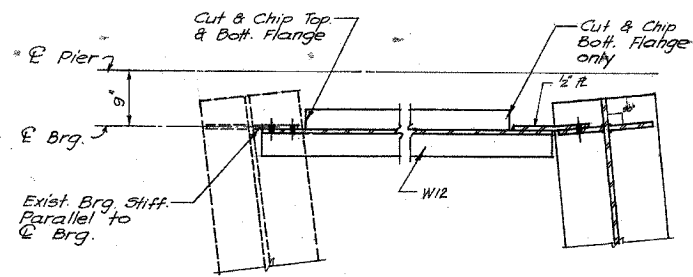
D 7
END DIAPHRAGM



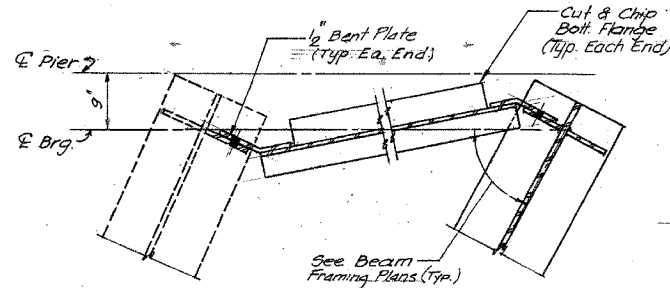
D 8
END DIAPHRAGM



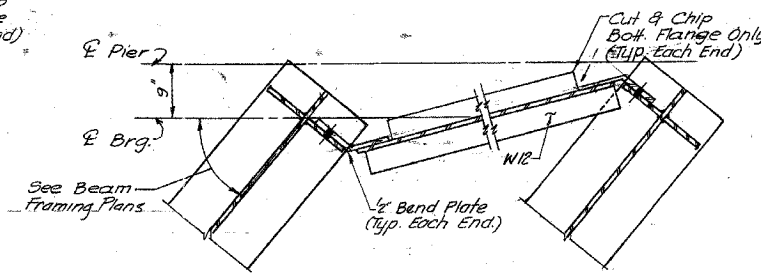
D 10
END DIAPHRAGM



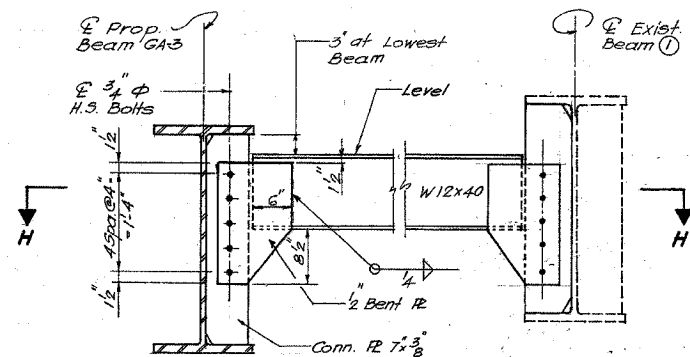
SECTION F-F



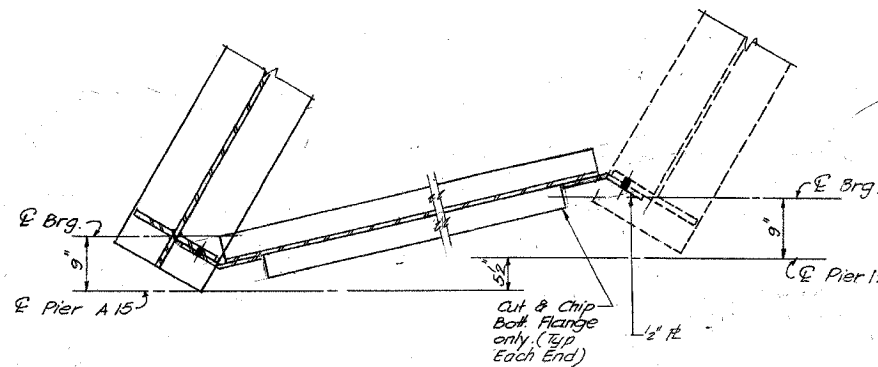
SECTION G-G



SECTION J-J



D 9
END DIAPHRAGM



SECTION H-H

ALL NEW MATERIALS SHOWN ON THIS SHEET ARE FURNISHED UNDER A SEPARATE STEEL FABRICATION CONTRACT (SECTION 1985-081F), UNLESS NOTED OTHERWISE.

SHEET J 35 OF 109

REVISIONS	
Name	Date
3	3/11/88

STATE OF ILLINOIS
DEPARTMENT OF TRANSPORTATION
F.A.I. ROUTE 90/94 (DAN RYAN EXPRESSWAY)
SECTION 1985-082 R - COOK COUNTY
S.B. MAINLINE RECONSTRUCTION
STRUCTURE 016-1067 & 1117 (RAMP 'A' & MAINLINE)
STRUCTURAL STEEL DETAILS
Scale: NONE Drawn By: E.D.
Date: AUGUST 14, 1987 Checked By: SK
ENVIRODYNE ENGINEERS INC.
Chicago, Illinois

BOWMAN, BARRETT & ASSOCIATES INC.
CONSULTING ENGINEERS
Chicago, Illinois
312.228.0100
www.bbainc.com

FOR INFORMATION ONLY

REVISIONS	
NAME	DATE

ILLINOIS DEPARTMENT OF TRANSPORTATION
F.A.I. 94/90 (DAN RYAN EXPRESSWAY)
SB DAN RYAN ELEVATED BRIDGE
REPAIR FROM 15TH TO 28TH STREETS
EXISTING PLAN INFORMATION
SN 016-1117 & 1067

SCALE: NTS DRAWN BY: MTR
DATE: 5/25/2006 CHECKED BY: BLU

44-494 PM 5/23/2006