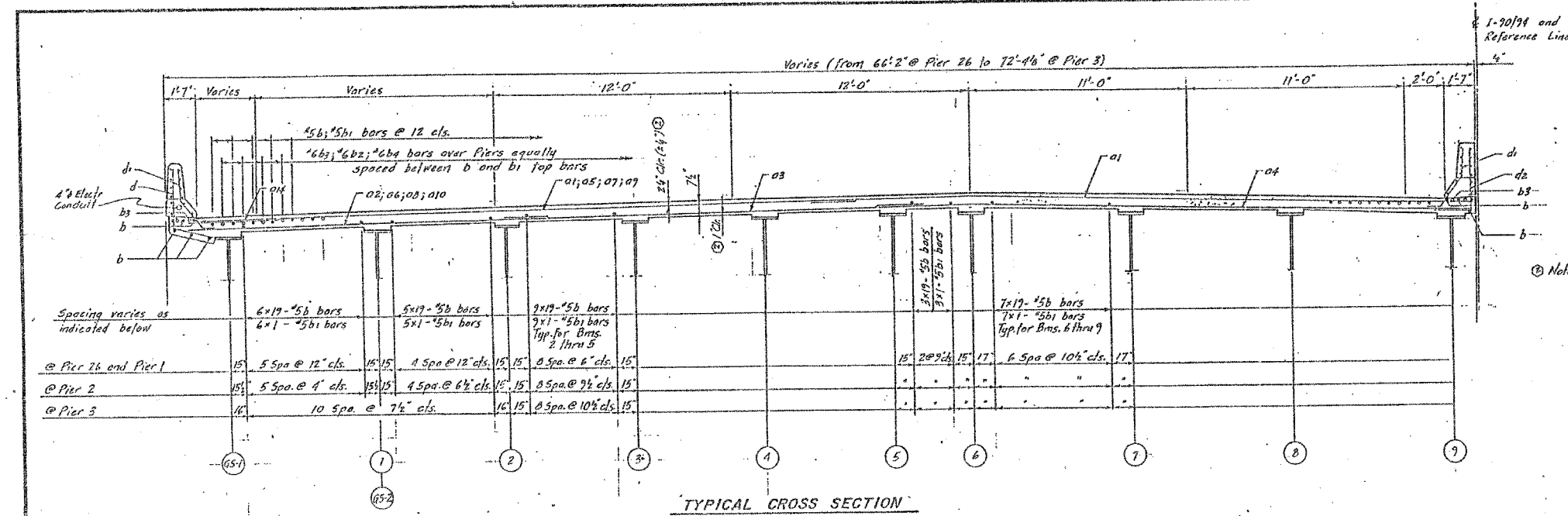
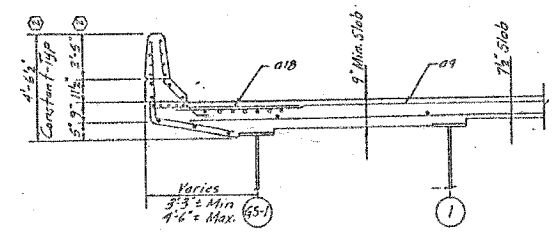


F.A.I.	SECTION	COUNTY	TOTAL SHEETS	SHEET NO.
94/90	2003-0291	COOK	344	295
STA.		TO STA.		
FED. ROAD DIST. NO.		ILLINOIS	FED. AID PROJECT	
62581				

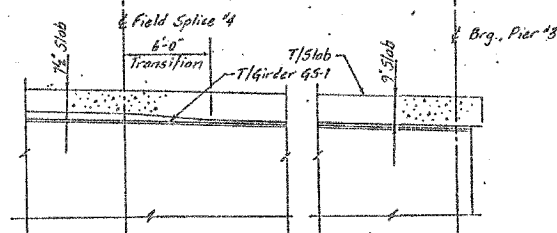


FEDERAL AID ROUTE NO.	SECTION	COUNTY	TOTAL SHEETS	SHEET NO.
90/94	#	COOK	20	17
STA.		TO STA.		
FED. ROAD DIST. NO.		ILLINOIS	FED. AID PROJECT	
# 1965-082 R				

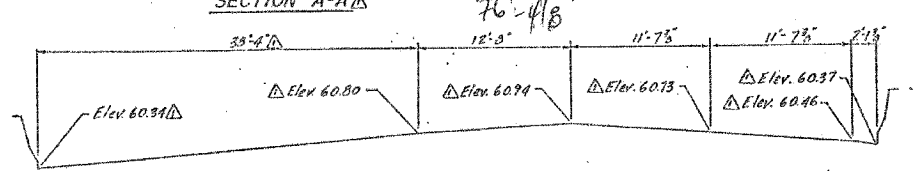
Note: Parapet bars are billed separately from deck bars.



SECTION A-A



SECTION B-B



AT PIER 3
Neoprene Expansion Joint

For Notes see Sheet 114

SHEET 117 OF 120

REVISIONS	
Name	Date

STATE OF ILLINOIS
DEPARTMENT OF TRANSPORTATION
F.A.I. ROUTE 90/94 (DAN RYAN EXPRESSWAY)
SECTION 085-082R - COOK COUNTY
S.B. MAINLINE RECONSTRUCTION
STRUCTURE 016 1116
DECK CROSS SECTION
Scale: NONE
Date: AUG. 18, 1987
Drawn By: A.W.P.
Checked By: A.W.
ENVIRONMENTAL ENGINEERS INC.
Chicago, Illinois

Rev. 12-7-07

BOWMAN, BARRETT & ASSOCIATES INC.
CONSULTING ENGINEERS
Chicago, Illinois
312.228.0100
www.bbainc.com

FOR INFORMATION ONLY

REVISIONS	NAME	DATE

ILLINOIS DEPARTMENT OF TRANSPORTATION
F.A.I. 94/90 (DAN RYAN EXPRESSWAY)
SB DAN RYAN ELEVATED BRIDGE
REPAIR FROM 15TH TO 28TH STREETS
EXISTING PLAN INFORMATION
SN 016-1116
SCALE: NTS
DATE: 5/25/2006
DRAWN BY: MTR
CHECKED BY: BLU

11-66070000-BRIDGE-2ASHEET 5/25/06 4:06:31 PM