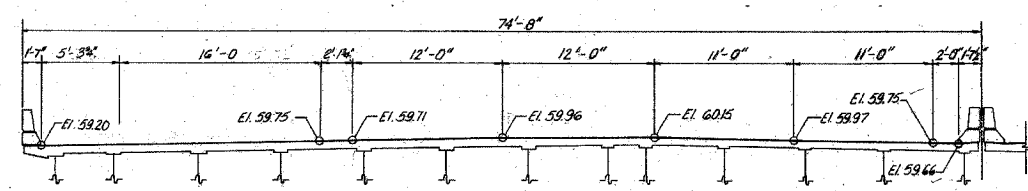
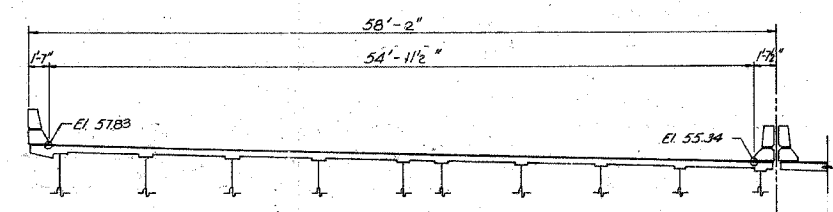


F.A.I.	SECTION	COUNTY	TOTAL SHEETS	SHEET NO.
94/90	2003-029BR	COOK	344	300
STA.	TO STA.			
FED. ROAD DIST. NO.	ILLINOIS	FED. AID PROJECT		
62581				

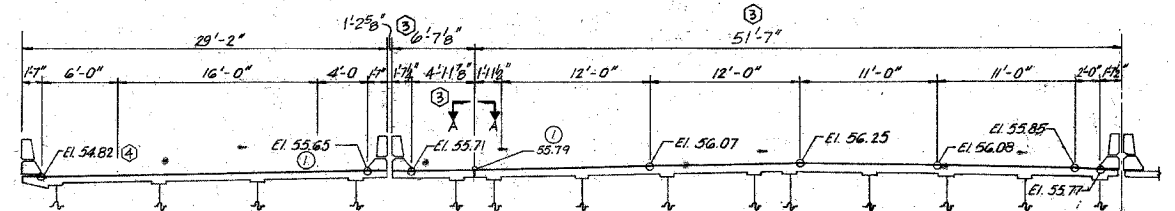
FEDERAL AID PROJECT NO.	SECTION	COUNTY	TOTAL SHEETS	SHEET NO.
90/54	*	COOK	89	41
STA.	TO STA.			
FED. ROAD DIST. NO.	ILLINOIS	FED. AID PROJECT		
* 1985-082 R				



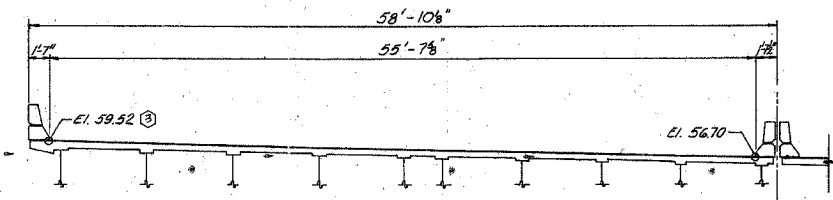
② EXPANSION JOINT AT PIER No. 1
4in. NEOPRENE



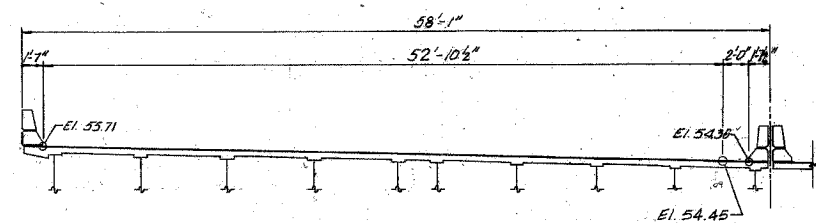
③ EXPANSION JOINT AT PIER No. 10
4in. PREFORMED JOINT SEAL



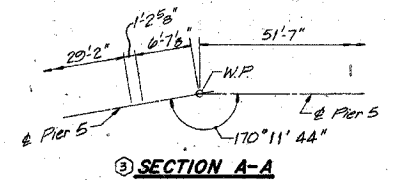
② EXPANSION JOINT AT PIER No. 5
4in. NEOPRENE



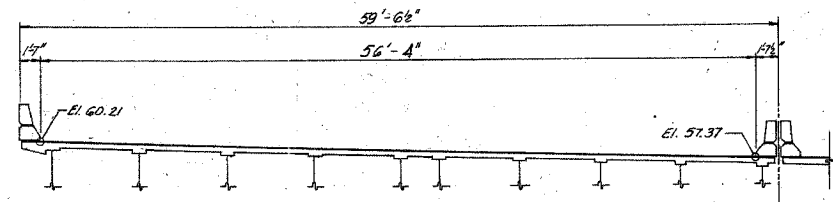
③ EXPANSION JOINT AT PIER No. 12
4in. PREFORMED JOINT SEAL



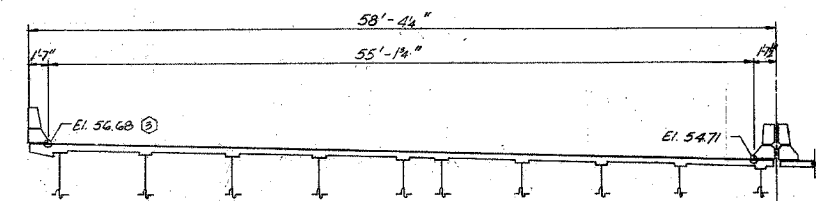
② EXPANSION JOINT AT PIER No. 8
2 1/2 in. PREFORMED JOINT SEAL



③ SECTION A-A



② EXPANSION JOINT AT PIER No. 13
2in. NEOPRENE



② EXPANSION JOINT AT PIER No. 9
2in. NEOPRENE

SHEET 41 OF 89

STATE OF ILLINOIS
DEPARTMENT OF TRANSPORTATION
F.A.I. ROUTE 90/94 (DAN RYAN EXPRESSWAY)
SECTION 1985-082 R- COOK COUNTY
S.B. MAINLINE RECONSTRUCTION
STRUCTURE 016-1118
TRANSVERSE DECK JOINT ELEVATION

Scale: NONE
Date: AUGUST 14, 1987
LDrawn By: A.V.
Checked By: M.E.M.
ENVIRODYNE ENGINEERS INC.
Chicago, Illinois

REVISIONS	NAME	DATE
②	Revision	2-5-88
③	Revision	5-11-88
①		

BOWMAN, BARRETT & ASSOCIATES INC.
CONSULTING ENGINEERS
Chicago, Illinois
312.228.0100
www.bbainc.com

FOR INFORMATION ONLY

REVISIONS	NAME	DATE

ILLINOIS DEPARTMENT OF TRANSPORTATION
F.A.I. 94/90 (DAN RYAN EXPRESSWAY)
SB DAN RYAN ELEVATED BRIDGE
REPAIR FROM 15TH TO 28TH STREETS
EXISTING PLAN INFORMATION
SN 016-1115

SCALE: NTS
DATE: 5/25/2006

DRAWN BY: MTR
CHECKED BY: BLU

4/19/05 PM 5/23/2006