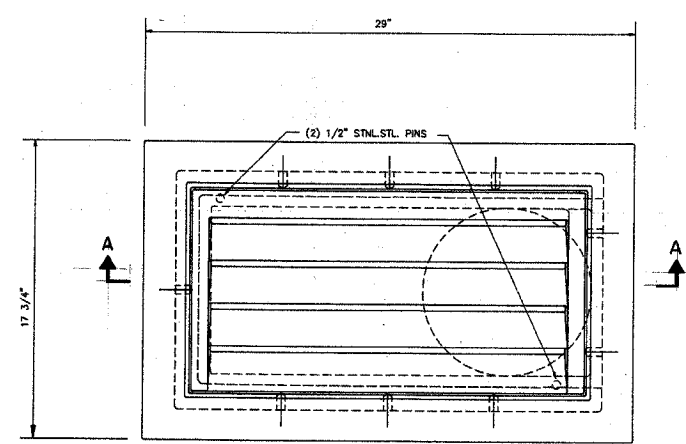
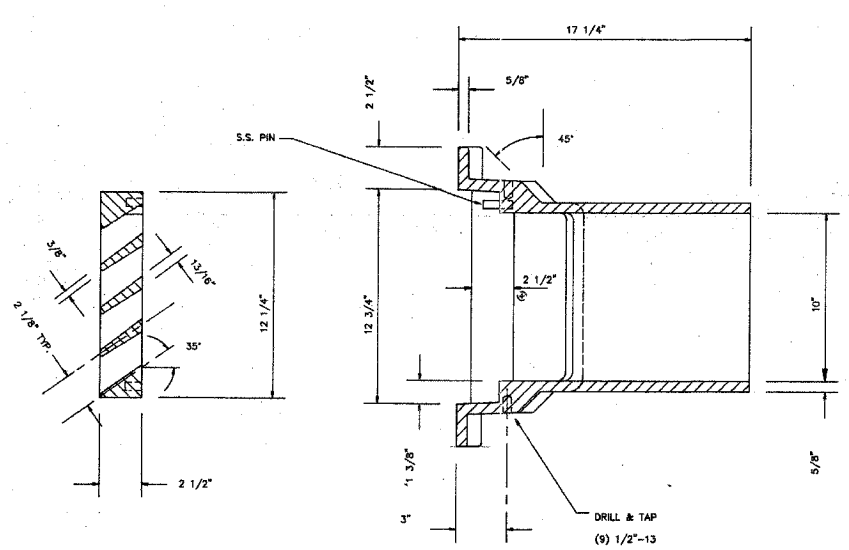


F.A.I.	SECTION	COUNTY	TOTAL SHEETS	SHEET NO.
94/90	2003-0291	COOK	344	333
STA.		TO STA.		
FED. ROAD DIST. NO.		ILLINOIS FED. AID PROJECT		
62581				

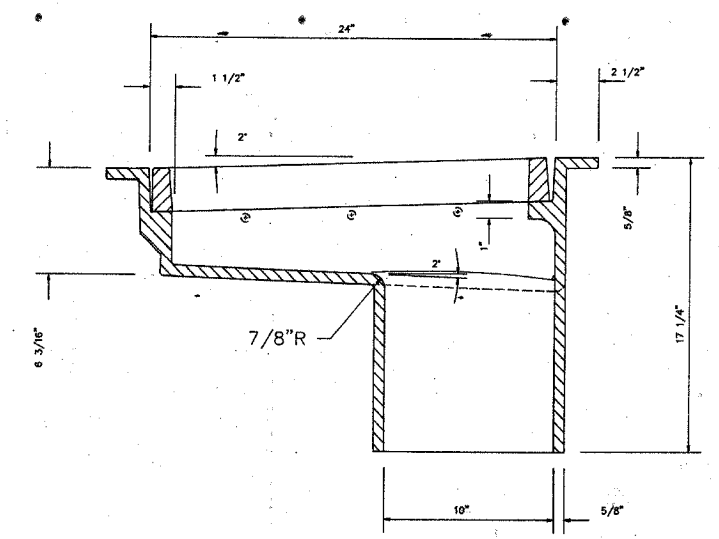
FEDERAL AID PROJECT NO.	SECTION	COUNTY	TOTAL SHEETS	SHEET NO.
90/94	2	COOK	93	56
STA.		TO STA.		
FED. ROAD DIST. NO.		ILLINOIS FED. AID PROJECT		
* 1985-082 R				



PLAN



BRIDGE SCUPPER - TYPE "B"  
NF-0332 435  
ESTIMATED WEIGHT 235\*



SECTION A-A

STRUCTURE	No. REQUIRED
016-1110	-
016-1111	3
016-1112	-
016-1113	11
016-1114	-
016-1115	11
016-1116	8
016-1117	16
016-1037	3
016-1067	-
016-1046	5
016-1059	1
TOTAL	58

MATERIAL: CAST GRAY IRON ASTM A-48, CLASS 35B  
FINISH: NO PAINT

SHEET BS 5 OF BS 6

Name	Date
(1)	

STATE OF ILLINOIS  
DEPARTMENT OF TRANSPORTATION  
F.A.I. ROUTE 90/94 (DAN RYAN EXPRESSWAY)  
SECTION 1985-082 R COOK COUNTY  
S.B. MAINLINE RECONSTRUCTION  
SCUPPERS - ALL STRUCTURES  
BRIDGE SCUPPER - TYPE "B"  
Scale: NONE  
Date: AUGUST 14, 1987  
Drawn By: CAD  
Checked By: W.L.B.  
ENVIRODYNE ENGINEERS INC.  
Chicago, Illinois

ALL MATERIALS SHOWN ON THIS SHEET ARE FURNISHED UNDER A SEPARATE SUPPLY CONTRACT (SECTION 1985-0851), UNLESS NOTED OTHERWISE.

Revision 12-7-87

FOR INFORMATION ONLY

REVISIONS	NAME	DATE

ILLINOIS DEPARTMENT OF TRANSPORTATION  
F.A.I. 94/90 (DAN RYAN EXPRESSWAY)  
SB DAN RYAN ELEVATED BRIDGE  
REPAIR FROM 15TH TO 28TH STREETS  
EXISTING PLAN INFORMATION  
SCALE: NTS  
DATE: 5/25/2006  
DRAWN BY: MTR  
CHECKED BY: BLU

BOWMAN, BARRETT & ASSOCIATES INC.  
CONSULTING ENGINEERS  
Chicago, Illinois  
312.228.0100  
www.bbainc.com

1985082R BRIDGE SCUPPERS SHEETS 680-21.EP.DIST.Adm 5/23/2006 5:00:50 PM