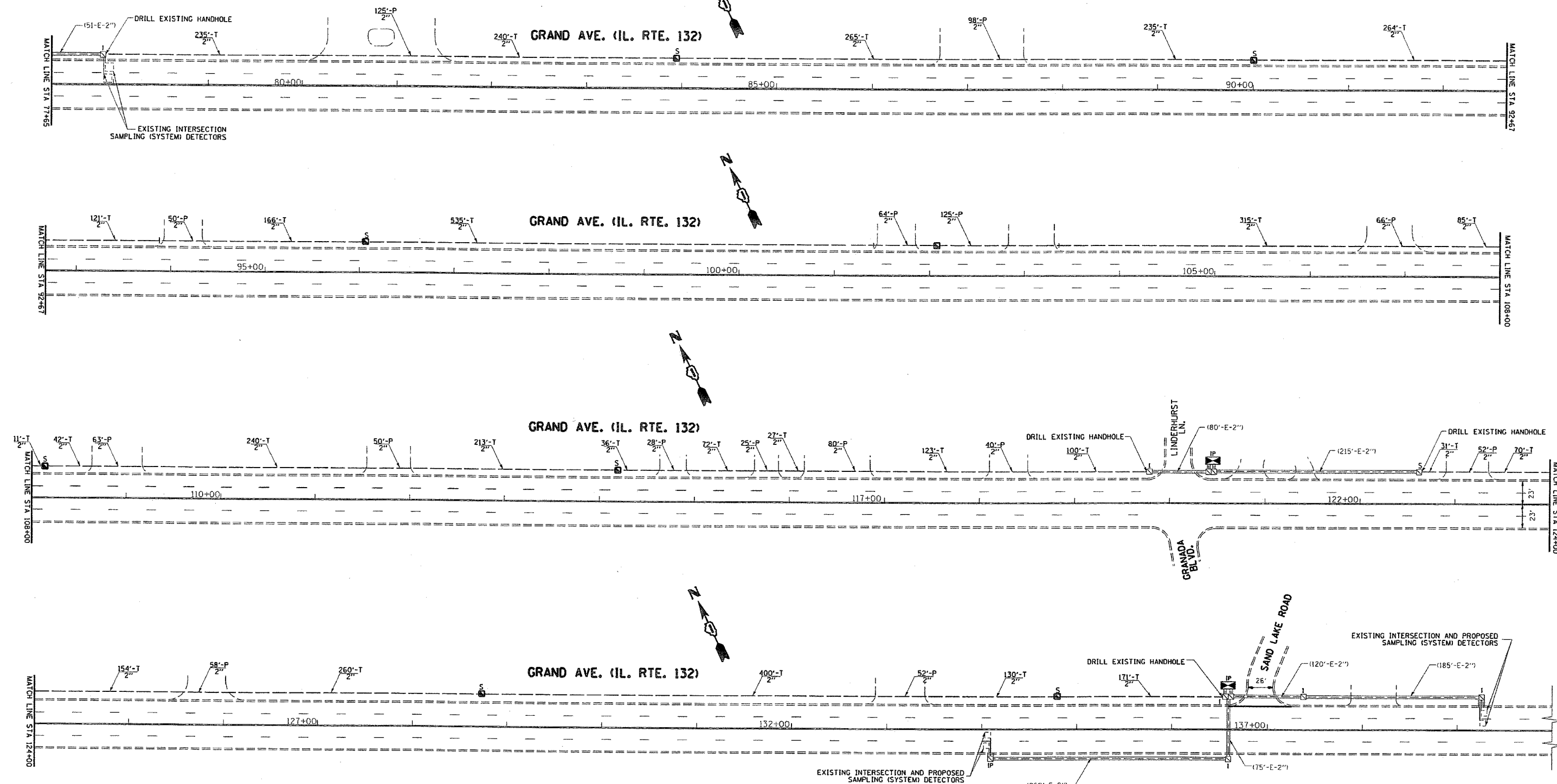


F.A.P. NO.	SECTION	COUNTY	TOTAL SHEETS	SHEET NO.
541	2004-121 TS	LAKE	19	18
STA.	TO STA.			
FED. ROAD DIST. NO. 1 ILLINOIS FED. AID PROJECT				



INTERCONNECT PLAN LEGEND

	PROPOSED	EXISTING		PROPOSED	EXISTING
CONTROLLER CABINET			G.S. CONDUIT IN TRENCH OR PUSHED		
SERVICE INSTALLATION, (IP) POLE OR (CG) GROUND MOUNT			SYSTEM	S	I
TELEPHONE CONNECTION			INTERSECTION	IP	I
HANDHOLE			UNIT DUCT	UD	
HEAVY DUTY HANDHOLE			COMMON TRENCH	CT	
DOUBLE HANDHOLE			DETECTOR LOOP, TYPE I		
			PREFORMED DETECTOR LOOP		

REVISIONS	
NAME	DATE

ILLINOIS DEPARTMENT OF TRANSPORTATION
ILLINOIS ROUTE 132
**ILLINOIS ROUTE 132
FROM ILL. 83 TO SANDLAKE RD.
INTERCONNECT PLAN**

SCALE: 1"=50'
DATE 5/3/2006

DRAWN BY: BCK
DESIGNED BY: BCK
CHECKED BY: DAD

5/3/2006
c:\projects\traffic\1013100\132\granada.m32
kanthiphaybc