

F.A.U. RTE.	SECTION	COUNTY	TOTAL SHEETS	SHEET NO.
1587	3098-RS-4	COOK	22	1

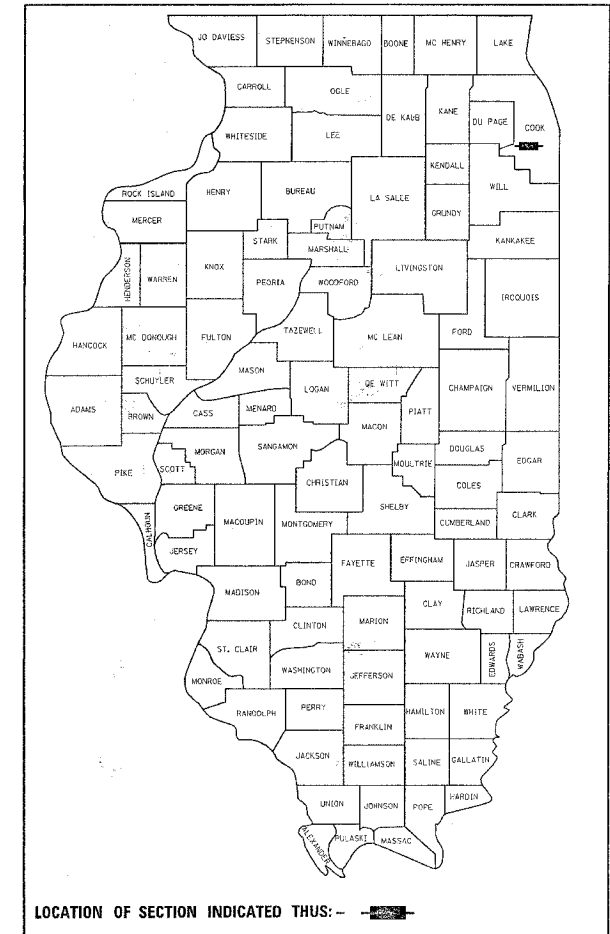
D-91-155-05

STATE OF ILLINOIS
DEPARTMENT OF TRANSPORTATION
DIVISION OF HIGHWAYS

**PROPOSED
HIGHWAY PLANS**

FOR INDEX OF SHEETS, SEE SHEET NO. 2

THE IMPROVEMENT IS LOCATED IN THE VILLAGES OF LEMONT & PALOS PARK

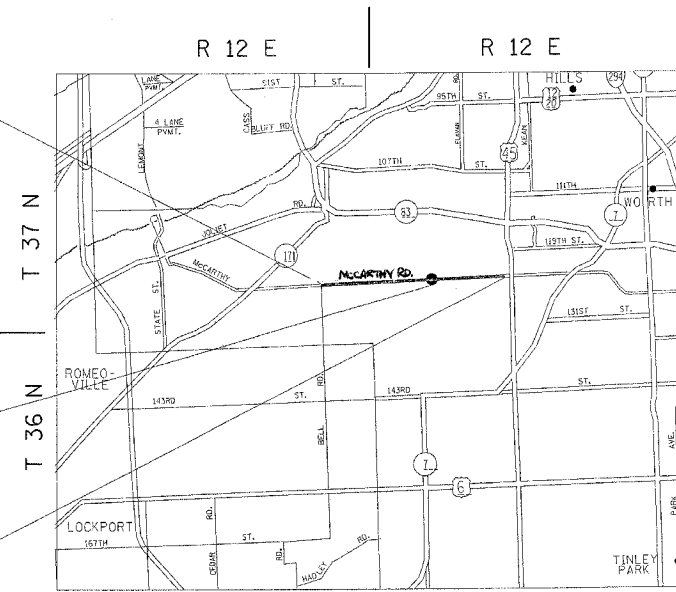


F.A.U. ROUTE 1587: MCCARTHY ROAD
SECTION: 3098 RS-4
BELL ROAD TO US 45 (LA GRANGE ROAD)
RESURFACING (MAINTENANCE), DRAINAGE
COOK COUNTY
C-91-155-05
PROJECT:ACHPP-HPP-F-1587(004)

IMPROVEMENT BEGINS STA. 401+18

OMISSION STATION 443+42 TO STATION 458+46

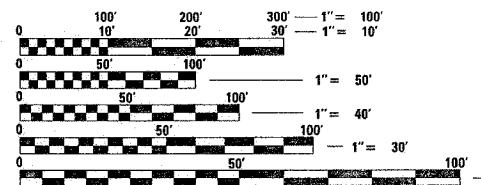
IMPROVEMENT ENDS STA. 588+46



LEMONT TOWNSHIP

TRAFFIC DATA

2002 ADT = 13,900
POSTED SPEED LIMIT= 45 - 55 MPH



FULL SIZE PLANS HAVE BEEN PREPARED USING STANDARD ENGINEERING SCALES. REDUCED SIZED PLANS WILL NOT CONFORM TO STANDARD SCALES. IN MAKING MEASUREMENTS ON REDUCED PLANS, THE ABOVE SCALES MAY BE USED.

J.U.L.I.E.
JOINT UTILITY LOCATION INFORMATION FOR EXCAVATION
1-800-892-0123

GROSS LENGTH OF IMPROVEMENT = 18,728 LINEAL FEET = 3.50 MILES
NET LENGTH OF IMPROVEMENT = 17,503 LINEAL FEET = 3.31 MILES

STATE OF ILLINOIS
DEPARTMENT OF TRANSPORTATION
DIVISION OF HIGHWAYS

SUBMITTED March 27, 2006
Diane M. O'Keefe /col
 DEPUTY DIRECTOR OF HIGHWAYS, REGION ENGINEER

June 30, 2006
Mike Stone /RD
 ENGINEER OF DESIGN AND ENVIRONMENT

June 30, 2006
Milton L. Sees, P.E. /RD
 DIRECTOR OF HIGHWAYS, CHIEF ENGINEER

PRINTED BY THE AUTHORITY OF THE STATE OF ILLINOIS

DIST. 1 DESIGN - PLAN PREP ENGINEER/KEN ENG/BOB BORO (847) 705-4178