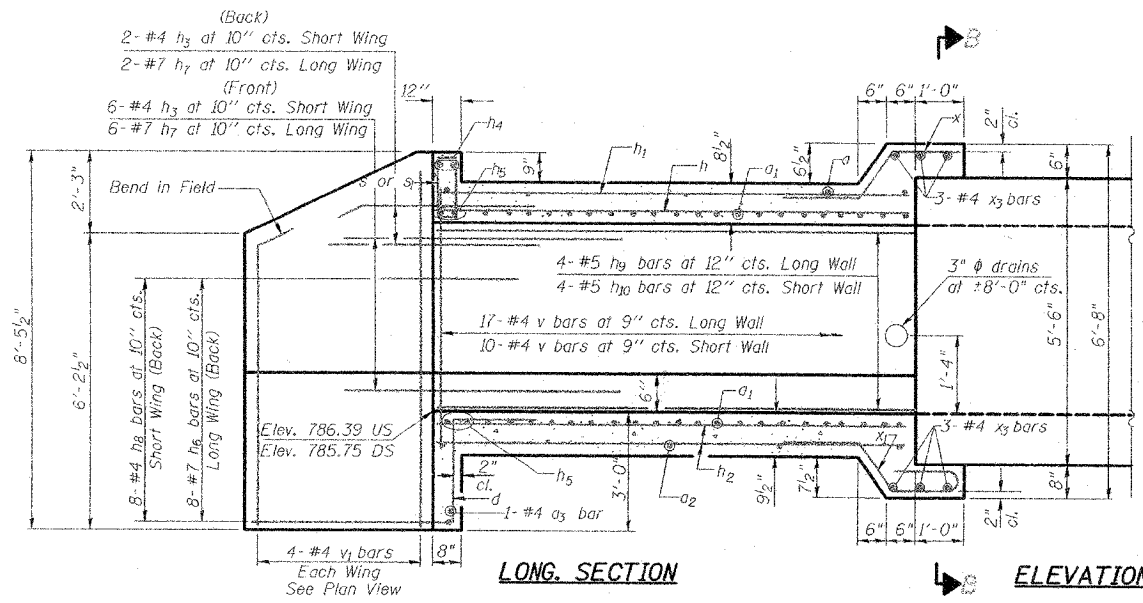


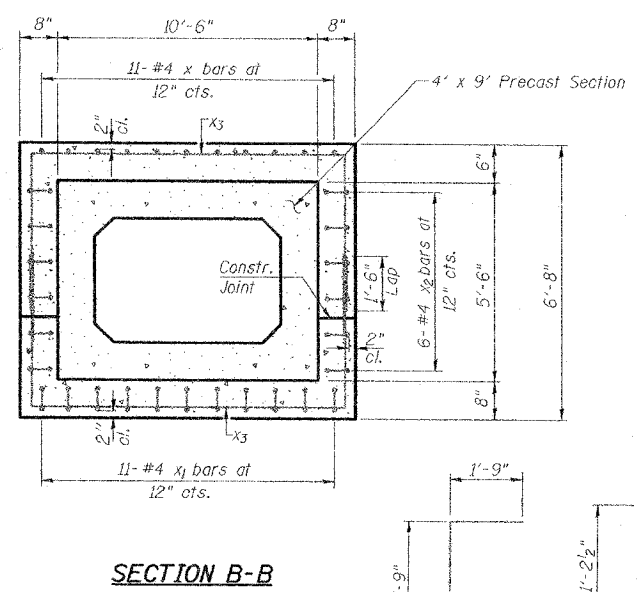
ROUTE NO.	SECTION	COUNTY	TOTAL SHEETS	SHEET NO.	SHEET NO.
1517	(2)RS-3 (3)RS-4	MCLEAN	223	99	3 SHEETS
FED. ROAD DIST. NO. 7 ILLINOIS FED. AID PROJECT					



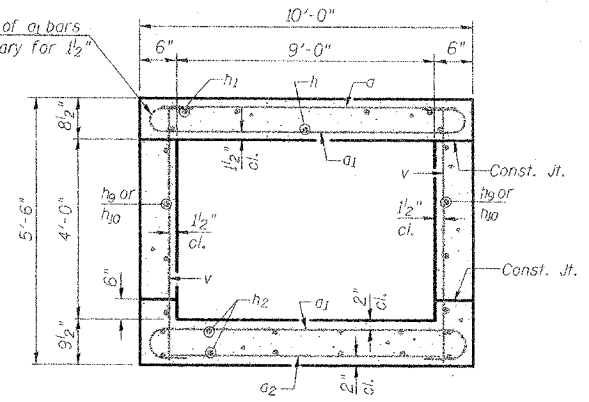
LONG. SECTION

ELEVATION

Dimensions at Rt. L's to ϕ Roadway



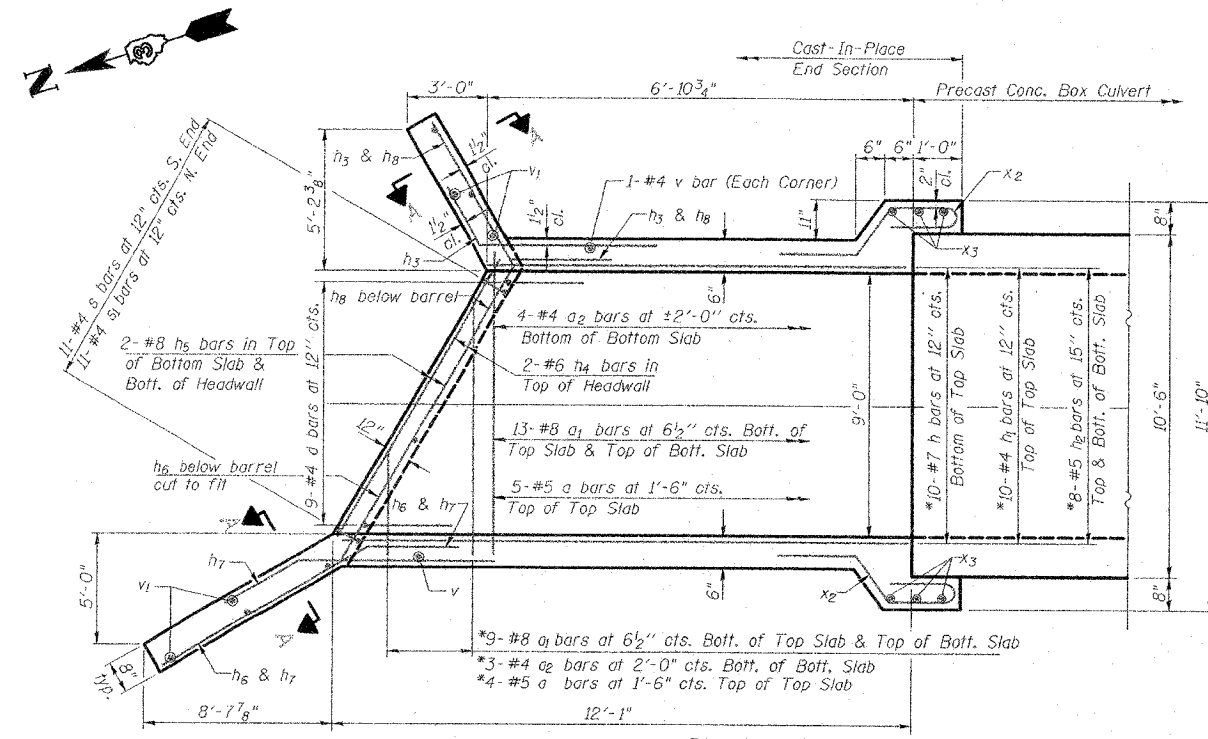
SECTION B-B



SECTION THRU CAST-IN-PLACE BARREL

BILL OF MATERIAL

Bar	No.	Size	Length	Shape
a	14	#5	9'-8"	—
a ₁	70	#8	11'-6"	—
a ₂	11	#4	9'-3"	—
a ₃	2	#4	10'-7"	—
d	18	#4	4'-6"	—
h	10	#7	18'-4"	—
h ₁	10	#4	18'-4"	—
h ₂	16	#5	18'-4"	—
h ₃	16	#4	8'-0"	—
h ₄	4	#6	10'-2"	—
h ₅	8	#8	11'-2"	—
h ₆	16	#7	12'-9"	—
h ₇	16	#7	8'-0"	—
h ₈	16	#4	8'-9"	—
h ₉	8	#5	11'-9"	—
h ₁₀	8	#5	6'-7"	—
v	58	#4	5'-2"	—
v ₁	16	#4	13'-2"	—
s	11	#4	4'-8"	—
s ₁	11	#4	4'-6"	—
x	22	#4	3'-6"	—
x ₁	22	#4	4'-11"	—
x ₂	24	#4	5'-1"	—
x ₃	12	#4	10'-5"	—
Concrete Box Culverts Cu. Yd.				23.9
Reinforcement Bars Pound				5310



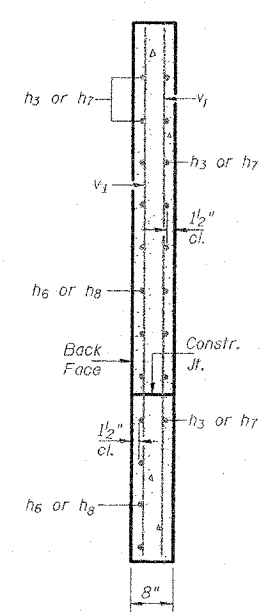
PLAN

(North end shown, South end similar by rotating 180°)

NOTES

A distance of half the length of the wingwall but not less than six feet of the barrel shall be poured monolithically with the wingwalls.
All construction joints shall be bonded.

*Bars shall be ordered full length & cut to fit skew. Balance of bar to be used in opposite end of culvert.



SECTION A-A

SECTION THRU HEADWALL

(Up Stream End Only)

BAR d

BAR s

BARS h₃ & h₈

BAR a₁

BARS h₆ & h₇

BAR s₁

BAR x

BARS x₁ & x₂

BAR x₃

ILLINOIS DEPARTMENT OF TRANSPORTATION	
SHEET TITLE CULVERT DETAILS	
PROJECT FAS ROUTE 1517 SECTION (2)RS-3 (3)RS-4 MCLEAN COUNTY STATION 442+60	PROJECT NO. 03064 DATE 5/18/05 DRAWN BY TFC CHECKED BY CME/REG/MCB DRAWING NO.
COOMBE-BLOXDORF P.C. Engineers / Land Surveyors Springfield, Illinois Design Firm License No. 184-002703	2 OF 2 SH15