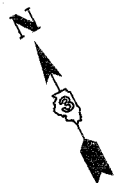


SE. 1/4 OF SECTION 11, T. 22 N., R. 3 E., OF THE 3RD PM.

EAST 1/4 CORNER
SEC. 11, T. 22 N., R. 3 E., 3 PM
SET IRON PIN
MON. REC. DOC. 2001R27463
P.O.C. 3PX0038 & 3PX0040



PARCEL NO. 3PX0037

CECIL H. REISE, TRUSTEE, et al.
FOR AREAS SEE SHEET 11

PARCEL NO. 3PX0038

DALE C. BAKER, et al.
TOTAL HOLDING = 6.429 ACRES ±
TOTAL R.O.W. REQUIRED = 0.076 ACRES ±
REMAINDER = 6.353 ACRES ±

PARCEL NO. 3PX0040

TIMOTHY J. BODDY, et ux.
TOTAL HOLDING = 6.449 ACRES ±
TOTAL R.O.W. REQUIRED = 0.059 ACRES ±
REMAINDER = 6.390 ACRES ±

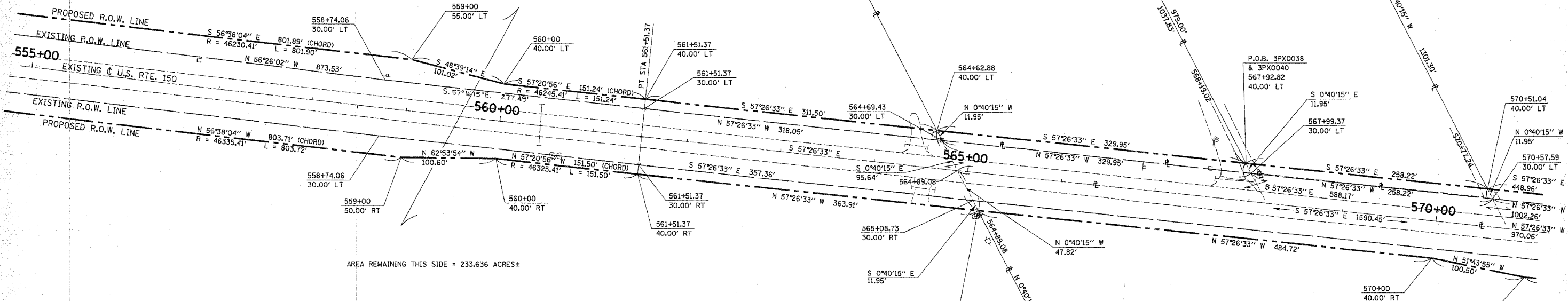
PARCEL NO. 3PX0037

CECIL H. REISE, TRUSTEE, et al.
FOR AREAS SEE SHEET 11

CURVE DATA
PI STA. 556+24.29
Δ = 1° 18' 18" (LT)
T = 0° 07' 26"
R = 527.13'
L = 46,285.41'
E = 1,054.22'
P.C. STA. 550+97.15
PT. STA. 561+51.37

AREA REMAINING THIS SIDE = 161.301 ACRES ±

AREA REMAINING THIS SIDE = 233.636 ACRES ±



PARCEL NO. 3PX0037

CECIL H. REISE, TRUSTEE, et al.
FOR AREAS SEE SHEET 11

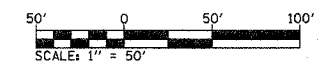
SE 1/4 SEC. 11,
T. 22 N., R. 3 E., 3rd PM

PARCEL NO. 3PX0039

JOHNNIE P. WASMAN, TRUSTEE
FOR AREAS SEE SHEET 13

NOTES:

- 1. COORDINATES AND BEARINGS ARE REFERENCED TO THE ILLINOIS STATE PLANE COORDINATE SYSTEM, EAST ZONE (NAD 83).
- 2. MEASUREMENTS SHOWN ARE GRID DISTANCE
- 3. GRID FACTOR = 0.99996777



RIGHT OF WAY PLANS

ROUTE F.A.S. 1517 (US 150)
SECTION (2) RS-3, (3) RS-4
PROJECT
COUNTY MCLEAN
JOB NUMBER R-93-022-00
STATION 555+00 TO 571+00
SCALE 1" = 50' SHEET 12 OF 25

PREPARED BY _____ DATE _____
CHECKED BY _____ DATE _____
APPROVED BY _____ DATE _____

I, THOMAS M. DRONE, HEREBY CERTIFY THAT I AM A PROFESSIONAL LAND SURVEYOR OF THE STATE OF ILLINOIS, THAT THE SURVEY OF F.A.S. 1517 WAS MADE BY HURST-ROSCHKE ENGINEERS, INC., UNDER MY DIRECTION, AND THAT THE SURVEY IS TRUE AND COMPLETE AS SHOWN TO THE BEST OF MY KNOWLEDGE AND BELIEF, THAT ALL MONUMENTS AND MARKS ARE OF THE CHARACTER AND OCCUPY THE POSITION SHOWN HEREON, AND ARE SUFFICIENT TO ENABLE THE SURVEY TO BE RETRACED, THIS PROFESSIONAL SERVICE CONFORMS TO THE CURRENT ILLINOIS MINIMUM STANDARDS FOR A BOUNDARY SURVEY.

8-15-05
DATE

Thomas M. Drone
THOMAS M. DRONE
ILLINOIS PROFESSIONAL LAND SURVEYOR NO. 35-002273
LICENSE EXPIRES 11-30-06

