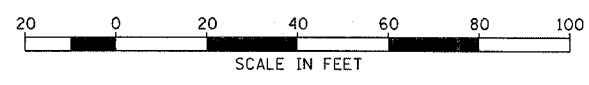


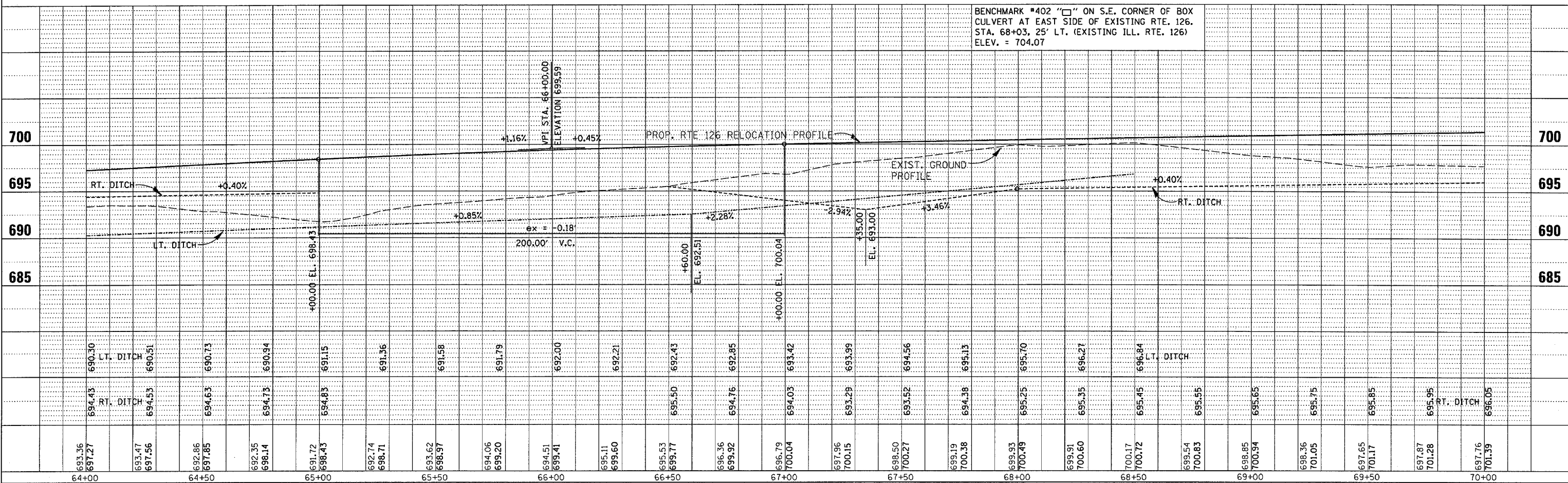
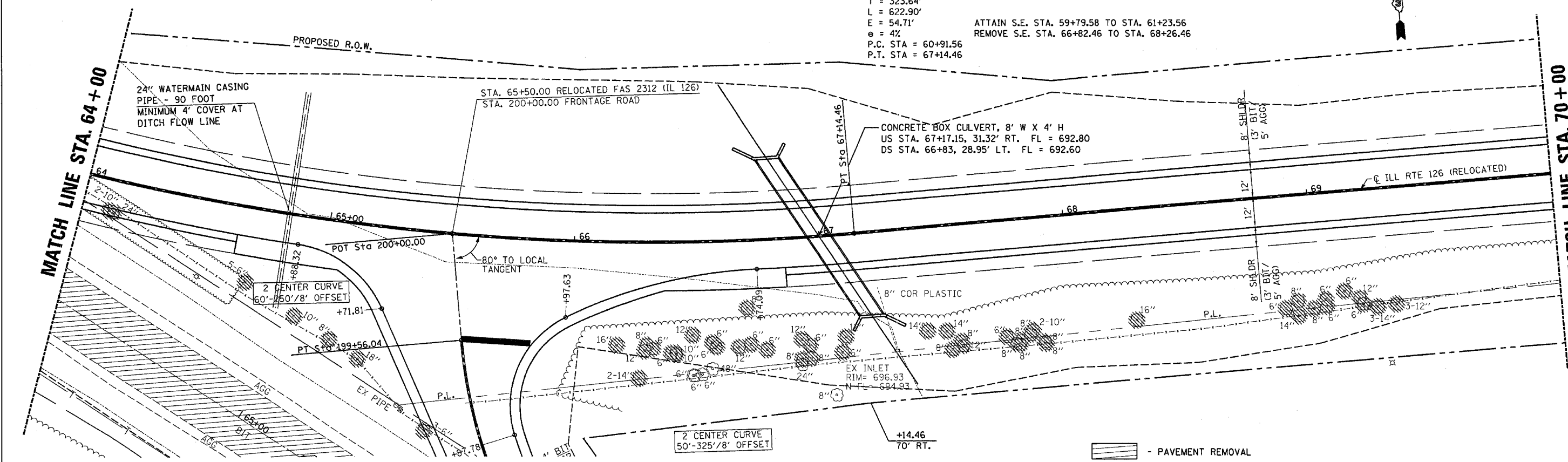
DATE	BY
3/30/2006	J.M.
NO.	
NO.	
NO.	
NO.	
NO.	
NO.	
NO.	
NO.	

DATE	BY
3/30/2006	J.M.
NO.	
NO.	
NO.	
NO.	
NO.	
NO.	
NO.	
NO.	

PROP. CURVE  
 PI STA. = 64+15.20  
 $\Delta = 38^\circ 22' 34''$  (LT)  
 $D = 6^\circ 09' 39''$   
 $R = 930.00'$   
 $T = 323.64'$   
 $L = 622.90'$   
 $E = 54.71'$   
 $e = 4\%$   
 P.C. STA = 60+91.56  
 P.T. STA = 67+14.46



F.A.P. RTE.	SECTION	COUNTY	TOTAL SHEETS	SHEET NO.
311	I N & TS	KENDALL	174	36
STA. 64+00		TO STA. 70+00		
FED. ROAD DIST. NO. 7 ILLINOIS FED. AID PROJECT				



BENCHMARK #402 "□" ON S.E. CORNER OF BOX CULVERT AT EAST SIDE OF EXISTING RTE. 126. STA. 68+03, 25' LT. (EXISTING ILL. RTE. 126) ELEV. = 704.07

3/30/2006  
 c:\projects\ep02804\consul\pp-126-60-66.dgn