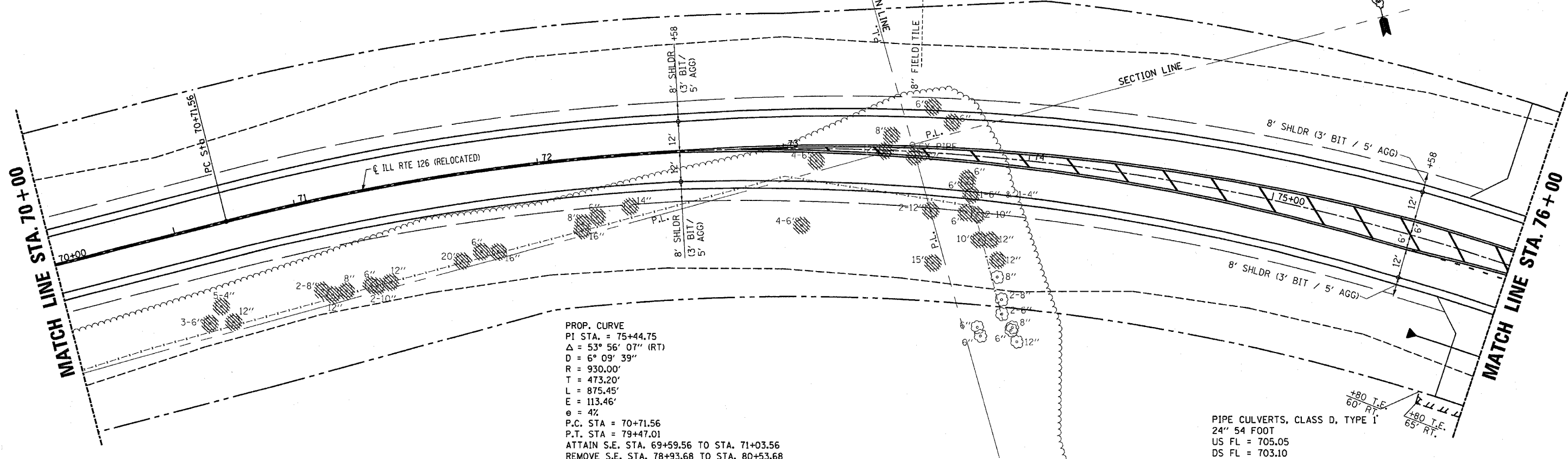
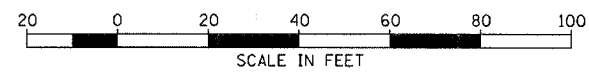


DATE: 8/24/06
 BY: JMM/MLN
 CHECKED: JMM/MLN
 NO. 2726

DATE: 8/24/06
 BY: JMM/MLN
 CHECKED: JMM/MLN
 NO. 2726

3/30/2006
 c:\pro\ecrs\ep02804\consul\pp-126-60-66.dgn

F.A.P. RTE.	SECTION	COUNTY	TOTAL SHEETS	SHEET NO.
311	1 N & TS	KENDALL	174	37
STA. 70+00		TO STA. 76+00		
FED. ROAD DIST. NO. 7		ILLINOIS FED. AID PROJECT		



PIPE CULVERTS, CLASS D, TYPE 1
 24" 54 FOOT
 US FL = 705.05
 DS FL = 703.10
 END SECTION 24" - 2 EACH

