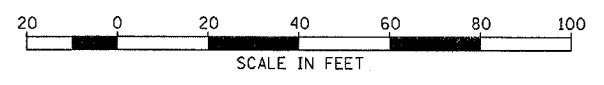


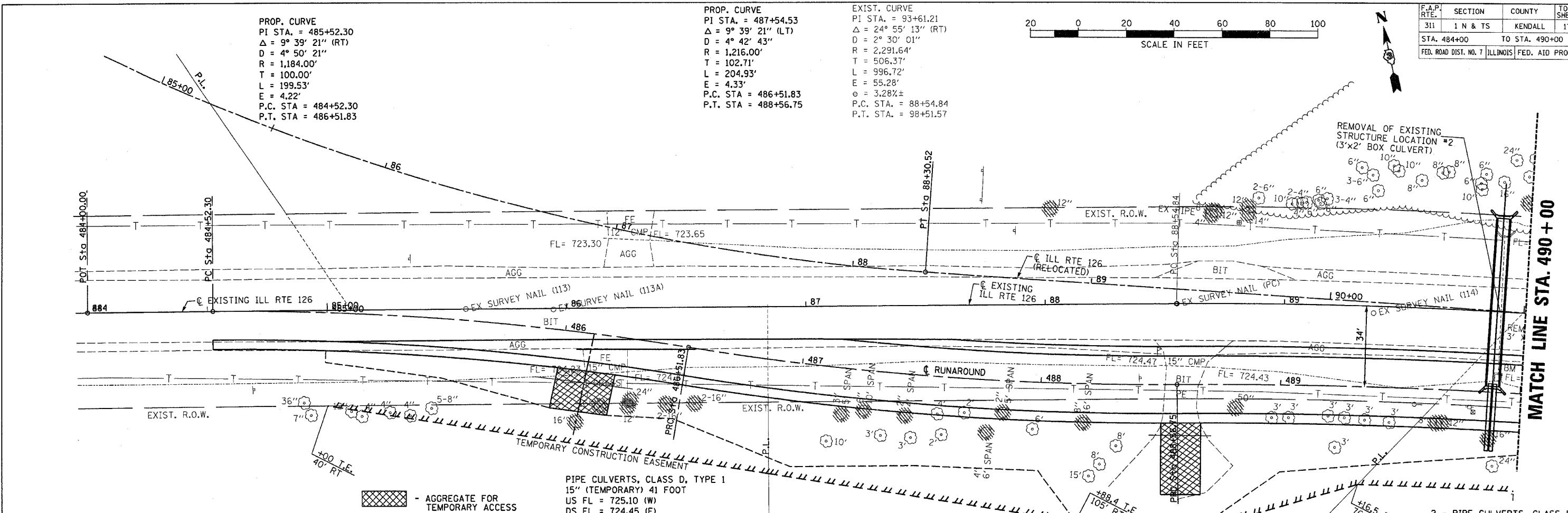
PROP. CURVE
 PI STA. = 485+52.30
 $\Delta = 9^\circ 39' 21''$ (RT)
 D = 4° 50' 21"
 R = 1,184.00'
 T = 100.00'
 L = 199.53'
 E = 4.22'
 P.C. STA = 484+52.30
 P.T. STA = 486+51.83

PROP. CURVE
 PI STA. = 487+54.53
 $\Delta = 9^\circ 39' 21''$ (LT)
 D = 4° 42' 43"
 R = 1,216.00'
 T = 102.71'
 L = 204.93'
 E = 4.33'
 P.C. STA = 486+51.83
 P.T. STA = 488+56.75

EXIST. CURVE
 PI STA. = 93+61.21
 $\Delta = 24^\circ 55' 13''$ (RT)
 D = 2° 30' 01"
 R = 2,291.64'
 T = 506.37'
 L = 996.72'
 E = 55.28'
 $e = 3.28\%$
 P.C. STA. = 88+54.84
 P.T. STA. = 98+51.57



F.A.P. RTE.	SECTION	COUNTY	TOTAL SHEETS	SHEET NO.
311	1 N & TS	KENDALL	174	41
STA. 484+00		TO STA. 490+00		
FED. ROAD DIST. NO. 7 ILLINOIS FED. AID PROJECT				



- AGGREGATE FOR TEMPORARY ACCESS

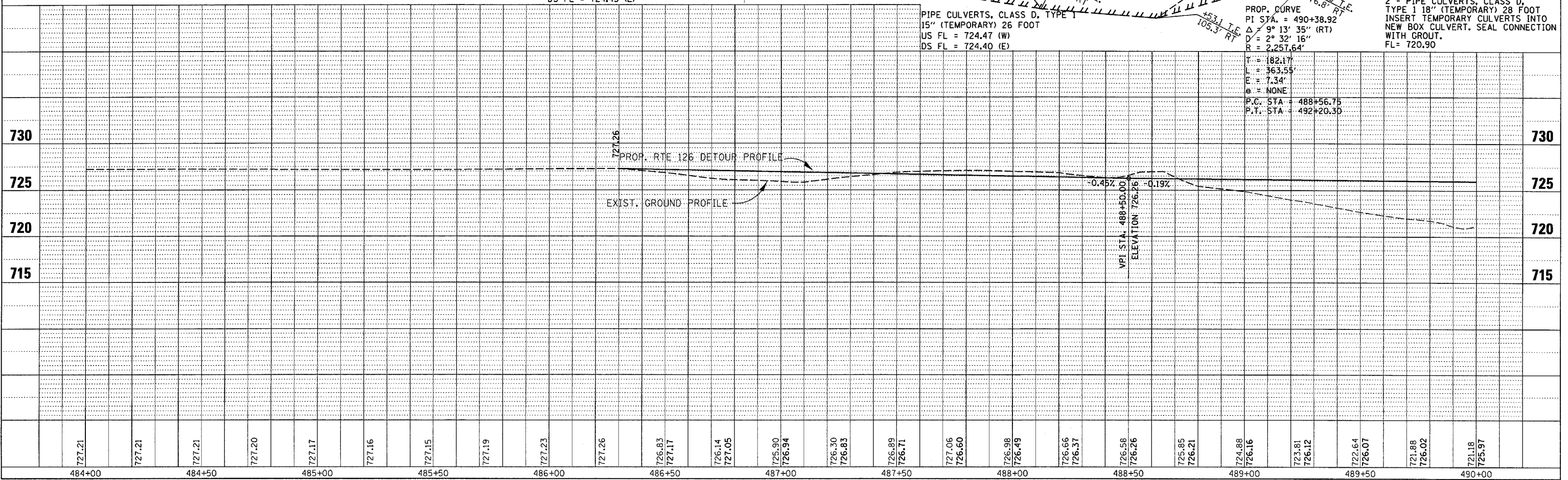
PIPE CULVERTS, CLASS D, TYPE 1
 15" (TEMPORARY) 41 FOOT
 US FL = 725.10 (W)
 DS FL = 724.45 (E)

PIPE CULVERTS, CLASS D, TYPE 1
 15" (TEMPORARY) 26 FOOT
 US FL = 724.47 (W)
 DS FL = 724.40 (E)

2 - PIPE CULVERTS, CLASS D,
 TYPE 1 18" (TEMPORARY) 28 FOOT
 INSERT TEMPORARY CULVERTS INTO
 NEW BOX CULVERT. SEAL CONNECTION
 WITH GROUT.
 FL = 720.90

DATE	BY
8/04	MMH
8/04	MMH
8/04	MMH
8/04	MMH
8/04	MMH

3/30/2006
 c:\projects\ep02804\consult\pp-126-60-66.dwg



**DETOUR - FAS 2312 (IL 126)
 STA.484+00 to STA.490+00**