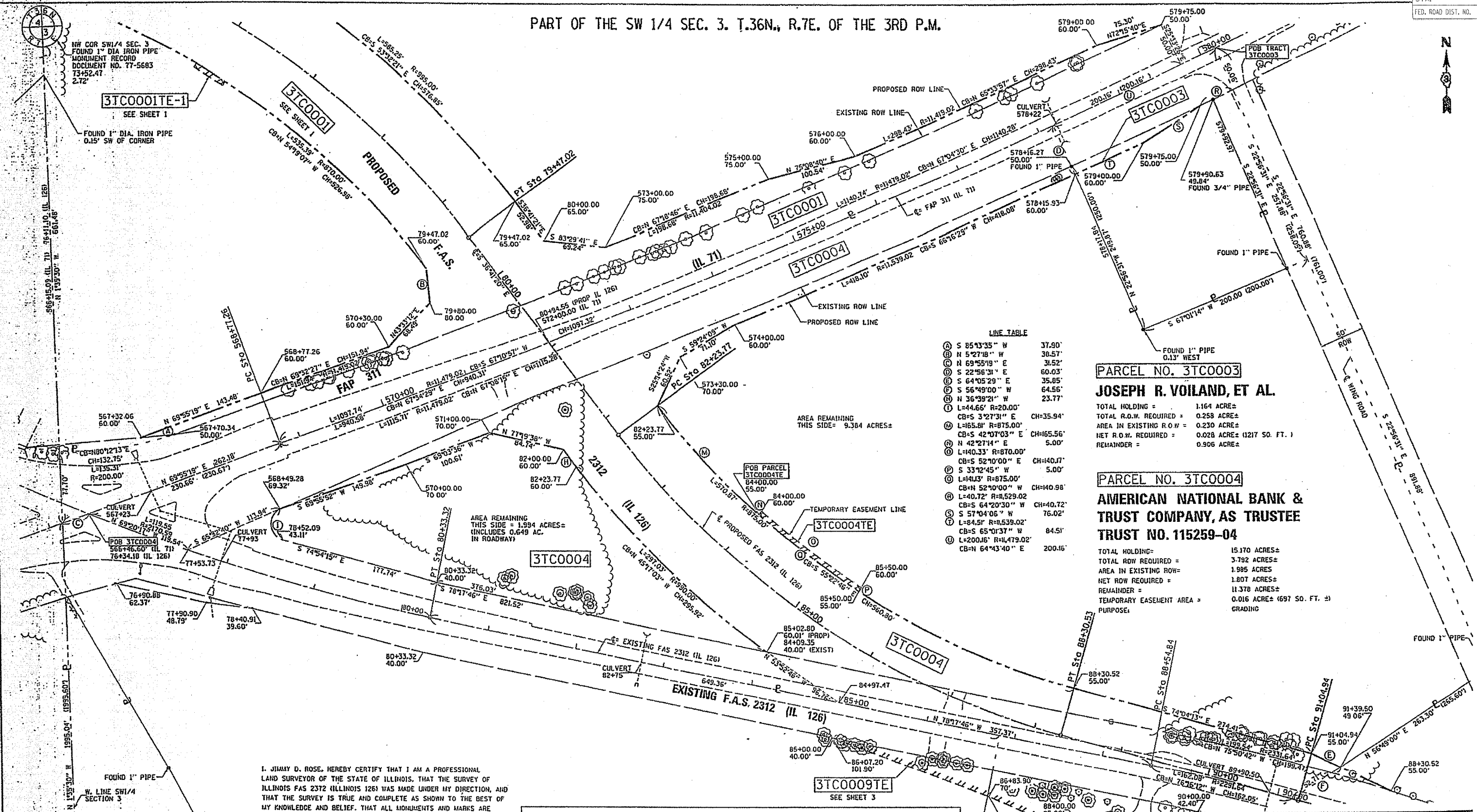


PART OF THE SW 1/4 SEC. 3. T.36N., R.7E. OF THE 3RD P.M.



NW COR SW 1/4 SEC. 3
FOUND 1" DIA IRON PIPE
MONUMENT RECORD
DOCUMENT NO. 77-5683
73+52.47
2.72'

FOUND 1" DIA. IRON PIPE
0.15' SW OF CORNER

SW CORNER SEC. 3
SET 1/2" DIA. REBAR
W/ CAP #35-3049
IRE-ESTABLISHED USING
MONUMENTS OF RECORD
ALONG SECTION LINE
MONUMENT RECORD DOC. NO. 200500035919

I, JIMMY D. ROSE, HEREBY CERTIFY THAT I AM A PROFESSIONAL LAND SURVEYOR OF THE STATE OF ILLINOIS, THAT THE SURVEY OF ILLINOIS FAS 2312 (ILLINOIS 126) WAS MADE UNDER MY DIRECTION, AND THAT THE SURVEY IS TRUE AND COMPLETE AS SHOWN TO THE BEST OF MY KNOWLEDGE AND BELIEF. THAT ALL MONUMENTS AND MARKS ARE OF THE CHARACTER AND OCCUPY THE POSITION SHOWN THEREON, AND ARE SUFFICIENT TO ENABLE THE SURVEY TO BE RETRACED. THIS PROFESSIONAL SERVICE CONFORMS TO THE CURRENT ILLINOIS MINIMUM STANDARDS FOR A BOUNDARY SURVEY.

DATED October 2, 2005
BY
JIMMY D. ROSE
ILLINOIS PROFESSIONAL LAND SURVEYOR NO. 35-2775
LICENSE EXPIRES NOVEMBER 30, 2006



PROP. CURVE DATA		EXIST. CURVE DATA	
F.A.S. 2312 (IL RTE 126)	F.A.S. 2312 (IL RTE 126)	F.A.S. 2312 (IL RTE 126)	F.A.S. 2312 (IL RTE 126)
PI STA. = 75+44.74	PI STA. = 85+38.39	PI STA. = 75+48.60	PI STA. = 93+61.21
Δ = 53° 56' 06" (RT)	Δ = 37° 22' 53" (LT)	Δ = 26° 02' 53" (LT)	Δ = 24° 55' 13" (RT)
D = 6° 09' 39"	D = 6° 09' 39"	D = 2° 38' 23"	D = 2° 30' 01"
R = 930.00'	R = 930.00'	R = 2170.59'	R = 2291.64'
T = 473.20'	T = 314.62'	T = 502.08'	T = 506.37'
L = 875.45'	L = 606.76'	L = 986.81'	L = 996.72'
E = 113.46'	E = 51.70'	E = 57.31'	E = 55.28'
P.C. STA. = 70+71.55	P.C. STA. = 82+23.77	P.C. STA. = 70+46.52	P.C. STA. = 88+54.84
P.T. STA. = 79+47.00	P.T. STA. = 88+30.53	P.T. STA. = 80+33.32	P.T. STA. = 90+51.57

LINE TABLE

Ⓐ S 85°43'35" W	37.90'
Ⓑ S 5°27'48" W	38.57'
Ⓒ N 69°55'19" E	31.52'
Ⓓ S 22°56'31" E	60.03'
Ⓔ S 64°05'29" E	35.85'
Ⓛ S 56°49'00" W	64.56'
Ⓜ N 36°39'21" W	23.77'
Ⓝ L=44.66' R=20.00'	CH=35.94'
Ⓞ CB=S 3°27'31" E	CH=35.94'
Ⓟ L=165.8' R=875.00'	CH=165.56'
Ⓠ CB=S 42°10'03" E	CH=165.56'
Ⓡ N 42°27'14" E	5.00'
Ⓢ L=140.33' R=870.00'	CH=140.7'
Ⓣ CB=S 52°10'00" E	CH=140.7'
Ⓝ S 33°12'45" W	5.00'
Ⓟ L=141.3' R=875.00'	CH=140.98'
Ⓠ CB=N 52°10'00" W	CH=140.98'
Ⓡ L=40.72' R=8,529.02	CH=40.72'
Ⓢ S 64°20'30" W	CH=40.72'
Ⓣ S 57°04'06" W	76.02'
Ⓛ L=84.5' R=8,539.02'	84.5'
Ⓧ CB=S 65°10'37" W	84.5'
Ⓨ L=200.16' R=11,479.02'	200.16'
Ⓩ CB=N 64°43'40" E	200.16'

PARCEL NO. 3TC0003
JOSEPH R. VOILAND, ET AL.

TOTAL HOLDING = 1.164 ACRES±
TOTAL ROW REQUIRED = 0.258 ACRES±
AREA IN EXISTING ROW = 0.230 ACRES±
NET ROW REQUIRED = 0.028 ACRES± (1217 SQ. FT.)
REMAINDER = 0.906 ACRES±

PARCEL NO. 3TC0004
AMERICAN NATIONAL BANK & TRUST COMPANY, AS TRUSTEE TRUST NO. 115259-04

TOTAL HOLDING = 15.170 ACRES±
TOTAL ROW REQUIRED = 3.792 ACRES±
AREA IN EXISTING ROW = 1.985 ACRES±
NET ROW REQUIRED = 1.807 ACRES±
REMAINDER = 11.378 ACRES±
TEMPORARY EASEMENT AREA = 0.016 ACRES± (697 SQ. FT.)
PURPOSE: GRADING

NOTE: BEARINGS ARE REFERENCED TO THE ILLINOIS STATE PLANE COORDINATE SYSTEM EAST ZONE, NAD 83.

0 50 100 150 200

SCALE: 1" = 50 FEET

RIGHT OF WAY PLANS

ROUTE	FAP 311 (IL RTE 71)	
SECTION	IN & TS	
PROJECT		
COUNTY	KENDALL	
JOB NUMBER	R-93-014-04	
STATION	76+00	TO 90+00
SHEET	2	OF 3
SCALE	1"=50'	