

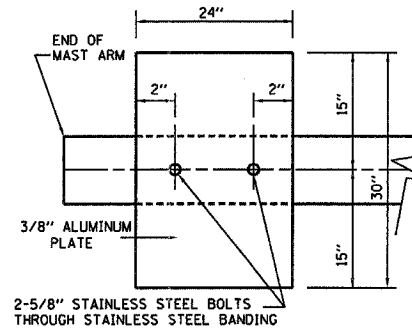
F.A. RTE.	SECTION	COUNTY	TOTAL SHEETS	SHEET NO.
*	IN & TS	KENDALL	174	64
STA.		TO STA.		
FED. ROAD DIST. NO.		ILLINOIS FED. AID PROJECT		
* FAP 311 (IL RTE 71) & FAS 2312 (IL RTE 126)				

DETECTOR LOOP SYSTEM	Ø	LOCATION	TURNS PER LOOP	INDUCTANCE READING (MICROHENRIES)	FREQUENCY (HERTZ)	J PIN STATUS
A	4	SB FAR	6	383	31190	ON
B	4	SB STBR BK	4	559	25816	ON
C	4	SB STBR FR	4	547	26100	ON
D	7	SBLT BK	4	559	25816	ON
E	7	SBLT FR	4	547	26100	ON
F	6	WB FAR	6	408	30233	ON
G	6	WB STBR	4	316	34340	OFF
H	1	WBLT	4	836	21110	ON
I	8	NB FAR	6	383	31181	ON
J	8	NB STBR BK	4	559	25805	ON
K	8	NB STBR FR	4	549	26058	ON
L	3	NBLT BK	4	559	25805	ON
M	3	NBLT FR	4	549	26058	ON
N	2	EB FAR	6	358	32255	ON
O	2	EB STBR	4	266	37457	OFF
P	5	EBLT	4	786	21777	ON

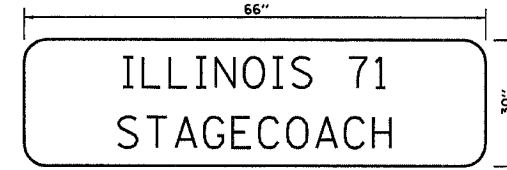
STREET NAME	COMPONENT	NUMBER	WATTAGE EACH	BURNTIME %
IL RTE 71	RED	10	10	47
	YELLOW	10	19	5
	GREEN	10	14	48
	YELLOW ARROW LT.	4	9	5
	GREEN ARROW LT.	4	3.4	10
	YELLOW ARROW RT.	4	9	5
IL RTE 126	RED	10	10	70
	YELLOW	10	19	5
	GREEN	10	14	25
	YELLOW ARROW LT.	4	9	5
	GREEN ARROW LT.	4	3.4	10
	TRAFFIC SIGNAL CABINET	CONTROLLER	1	6
VEHICLE DETECTORS		16	4	100
UPS		1	50	100
LIGHTING	LUMINAIRE	4	250	50

AGENCY RESPONSIBLE FOR TRAFFIC SIGNAL ENERGY CHARGES:  
UNITED CITY OF YORKVILLE

NOTE:  
DAMPENING DEVICE SHALL CONSIST OF A 24" X 30" TYPE 1, UNPAINTED ALUMINUM SIGN STOCK MOUNTED HORIZONTALLY ON TOP OF MAST ARM WITH THE 30" LENGTH PERPENDICULAR TO THE ARM. COST OF THE DAMPENING DEVICE IS INCLUDED IN THE MAST ARM PAY ITEM.

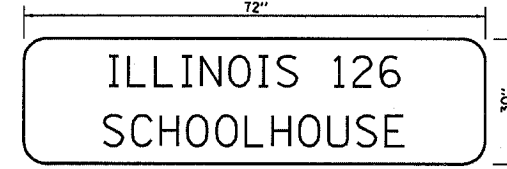


NOTE:  
MOUNT DAMPENING PLATE TO END OF EACH TRAFFIC SIGNAL MAST ARM.  
**DAMPENING PLATE DETAIL - TOP VIEW**



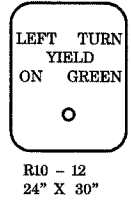
TYPE A SHEETING REQUIRED  
6" D SERIES LETTERS  
2 SIGNS REQUIRED = 13.75 SQ. FT. EACH  
= 27.50 SQ. FT. TOTAL

THIS STREET NAME SIGN SHALL BE PLACED ON THE MAST ARMS PARALLEL WITH ILLINOIS 71



TYPE A SHEETING REQUIRED  
6" D SERIES LETTERS  
2 SIGNS REQUIRED = 15.0 SQ. FT. EACH  
= 30.0 SQ. FT. TOTAL

THIS STREET NAME SIGN SHALL BE PLACED ON THE MAST ARMS PARALLEL WITH ILLINOIS 126

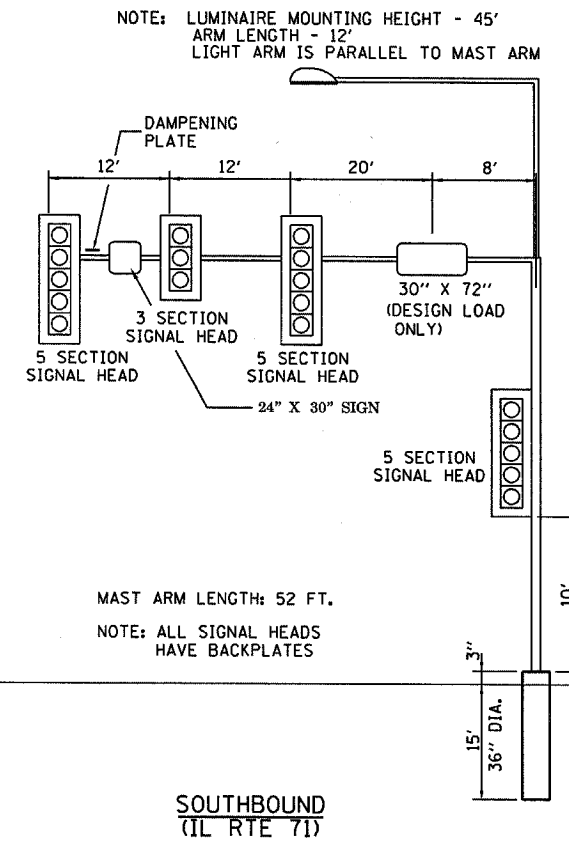
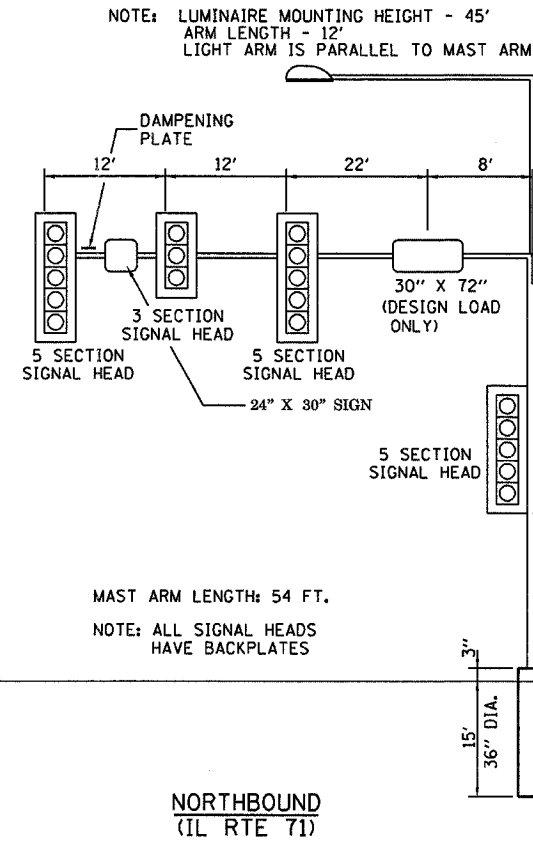
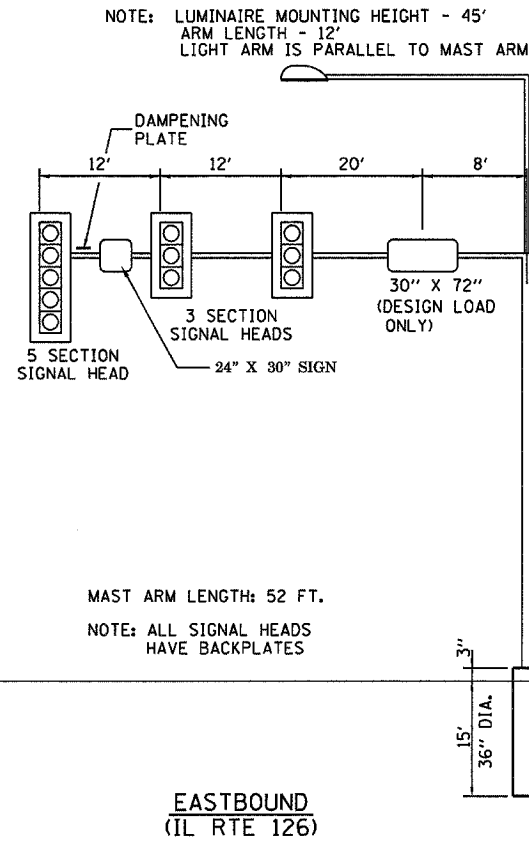
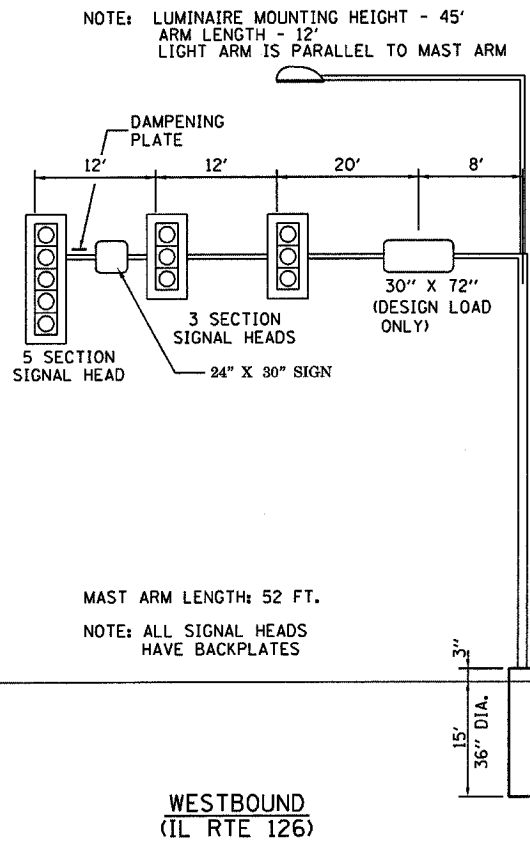


R10 - 12  
24" X 30"

TYPE A SHEETING REQUIRED  
8 SIGNS REQUIRED = 5 SQ. FT. EACH  
= 40 SQ. FT. TOTAL

THIS SIGN SHALL BE LOCATED 6" TO 12" TO THE RIGHT OF EACH 5 SECTION MAST ARM MOUNTED LEFT TURN SIGNAL AND DIRECTLY BELOW AND PARALLEL TO THE BACKPLATE OF EACH POST BRACKETED 5 SECTION LEFT TURN SIGNAL FOR THE NORTHBOUND AND SOUTHBOUND APPROACHES.

J PIN STATUS: "ON" MEANS STANDARD DETECTOR SETUP. "OFF" MEANS J WIRE HAS BEEN DISCONNECTED, BUT INTACT, AT THE HARNESS PANEL WITH THE NECESSARY SPADE CONNECTION ATTACHED, MARKED, AND INSULATED.



REVISIONS	
NAME	DATE

ILLINOIS DEPARTMENT OF TRANSPORTATION  
TRAFFIC SIGNAL DETAILS  
FAP 311 (IL RTE 71)  
AND FAS 2312 (IL RTE 126)  
SECTION IN & TS  
KENDALL COUNTY

SCALE: VERT. 1" = 20'  
HORIZ. 1" = 20'  
DATE 1/06

DRAWN BY ARR  
CHECKED BY MVF